

TNT SIMMENTALS

39TH ANNUAL "CARRYING ON"
THE EXPLOSIVE DIFFERENCE SALE

Friday, **FEBRUARY 9, 2024**

1 p.m. CST • Erbele Ranch, Lehr, ND

Your **COMMERCIAL BULL HEADQUARTERS**, along with **BREED-LEADING HERDSIRES!**
They are **THICK and DEEP** – All backed by the **TNT 100% GUARANTEE!**

DVAuction Broadcasting
Real-time Auctions

Selling
119 Bulls

Purebred Black Sim
3/4, 1/2 & 1/4
SimAngus™

Purebred Red Sim
3/4, 1/2 & 1/4
SimAngus™

Purebred
Red Angus

**Volume
Discounts!**



TNT SIMMENTAL RANCH

Shanon & Gabe Erbele
Lehr, ND
(701) 527-5885 (Shanon's cell)
(701) 426-9445 (Gabe's cell)
gserbele@hotmail.com

Kevin & Lynette Thompson
Almont, ND
(701) 391-1631 (Kevin's cell)
(701) 843-8454
kevinandlynette@westriv.com

- Performance Data and Genomic-Enhanced EPD!
- No creep feed!
- Majority homozygous polled!
- All reds are non-diluters!
- All blacks will be homozygous- or heterozygous-black verified!



Bulls viewable anytime at the **Erbele Ranch, 30 m. S of I-94 Exit 228** • Videos at www.tntsimmentals.com • Contact us for a **catalog**.

Hello from the TNT Ranch!

Welcome to our 39th Annual Bull Sale! We continue to be blessed with another exceptional sale in 2023 thanks to all our top-end customers. We had such amazing support from both past and new customers and friends. It was another wonderful, emotional day for both my family and my parents, seeing TNT continue to succeed with the next generation.

We continue to be busy chasing after our 6 kids on a daily basis! They are all very active in many school and community activities, but we still make sure that they find time to help out on the ranch! Trenton is at NDSCS majoring in Electrical Technology and is loving it, but we sure miss his help, and he admits he misses the ranch work as well. We were glad to hear that!! All the kids play a big role in the day-to-day activities, and we love the various interests they have in the ranch, we certainly couldn't do it without all their help! The oldest three kids have purchased some registered heifers and Teagan has her first bull in this year's sale. Gabe's brother Paul and dad, Robert, are a big part of the operation as well. His brother Matthew also comes home for a few months to help with various jobs around the ranch and is looking to move back home. It will be great to have him here permanently, especially with the older kids off at college. We are very appreciative that they are willing and able to help us make this all possible.

We continue to grow our herd and will be calving 370 registered cows this year along with 30 recipient cows. We began purchasing cows from Dad and Mom in 2014 and have continued to grow our herd from theirs ever since. Dad will also be selling 30 of his bulls with us this year as well. With increasing our herd numbers, we had a larger number of excellent bulls in the sale pen, so we did increase our offering by 10 head. We feel they are just as good from the first to the last as in years past. As you will notice in the catalog, we added an area to feature our newly purchased herd sires. We are extremely excited about the bulls we bought and are anxious to calve this year's crop. Many of them were high selling, sale-topping bulls, that conform nicely to the parameters we have for our herd. They were chosen for their cow family strengths that contribute to our maternal expectations of highly productive, strong producing cows with added longevity, while adding value through their phenotype, profit and performance aspects as well.

We do not creep feed the calves, so what you see is what the dam produced. We came into calving season with the most snow we had seen in years and extremely cold temperatures, which made calving a bit of a challenge. With record setting snow, it was a tough spring trying to get the pairs out to pasture when there were not fences to be seen. We managed to survive as we always do, and it did allow us to start off the spring with a lot of green grass. We were dry but had timely, small shots of rain to keep things from getting real bad. We weaned the calves the beginning of October and the calves weaned off heavier and normal and looked excellent on pastures. Our fall has been extremely mild, and the bulls have really done well. We have them on a lighter ration than in the past due to the nice weather and they have still managed to surpass our normal gains. Dad had one of the wettest years on record, one he will never forget! Dad's bulls were weaned and raised at his place until October 25th, so they are in their own contemporary for weaning, but were included with ours from then on. We feel rationing the bull in one large contemporary group gives you a more accurate comparison against the whole herd. There the bulls are fed a TMR ration and are not being pushed hard, being worked up to what they are currently being fed in mid-December. We really like this ration that has a high percentage of high-moisture alfalfa baleage in it, which makes the ration higher in protein and they consume it really well. This ration is designed for a 3.25 to 3.50 gain and this year they were averaging 3.99 on a 96-day test. We feel the extremely mild weather, performance minded genetics and choosing the very top end of all the bulls born at both places helps contribute to their higher gain.

Same as last year, the bulls will not go through the ring, but will sell by video with Seth Weishaar as our auctioneer. The bulls will be penned right outside the sale facility by 9 a.m. for your viewing and will stay in those pens until the conclusion of the sale. The sale will be broadcast live on DVAuction and we will have sale reps here and phone bidding will be available for anyone who isn't able to attend. We will have a video of each bull on our website and on DVAuction. We do encourage you to try to get out and see the bulls in person ahead of sale day. They are all being fed at our ranch at Lehr. Don't hesitate to call us or Dad to go over any of the bulls.

We invite you to come to the ranch any time and view the cattle and see the way we manage our herd. We feel this is another tremendous offering of bulls that we are proud to represent. All but four of the bull are out of dams that were raised on the TNT Ranch. We feel this shows the ability of our home-raised cows to raise top end bulls from the first to the last. We place a strong emphasis on fleshing ability, performance, docility, udder quality, and high maternal traits. We are proud of our cattle and feel you will be proud of "The Explosive Difference" they will make for you. We, along with Dad, truly have a passion for this business and love breeding cattle with the never-ending pursuit to try to make them better. Dad and mom have done so much for the Simmental breed, and we hope that with their continued guidance and support, we can continue to carry-on that impact for years and generations to come. We will continue to stand behind what we sell just as Dad and Mom have, with high integrity and honesty backing all of our business operations. Thank you for your current and past interest in TNT Simmentals!



Gabriel & Shanon Erbele, Trenton (19) Teagan, (17), Dawson (13) Tarryn (10), Dylan (6) & Sutton (5)

Sincerely, Shanon, Gabriel and Family

TNT Simmentals 39th Annual Sale – Friday, February 9, 2024

9:00 A.M. - BULLS PENNED FOR VIEWING

11:00 A.M. - LUNCH

1:00 P.M. - SALE BEGINS

LOCATION: TNT SIMMENTALS SALE FACILITY AT

THE ERBELE RANCH - 6471 51ST AVE SE. LEHR, ND 58460

From the North – Take I-94 Streeter Exit 228, go S. 17 miles to the T. Turn right and go 12 miles to 65th Street. Turn left and go .6 miles.

From the South – From Highway 13, turn S. into Lehr and take Highway 30 N. 13 miles to 65th Street. Turn right and go .6 miles.

LODGING

Wishek Inn, Wishek.....	701-452-4223
Broken Bell Inn, Napoleon.....	701-202-9134
Cobblestone Inn, Steele.....	701-475-4478
Comfort Inn, Jamestown.....	701-252-7125

SALE STAFF

Seth Weishaar, Auctioneer	605-210-1124
Bill Schermer, The Stockman.....	641-425-2641
Kelly Klein, Tri-State Livestock News.....	701-320-5817
Kadon Leddy, Cattle Business Weekly.....	605-924-0757
Perry Thomas, ASA Specialist.....	701-370-8336

ANNOUNCEMENTS

Announcements made sale day take precedence over print material associated with this sale. Any person attending our sale does so at their own risk. TNT Simmentals and anyone helping with the sale assumes no liability, including but not limited to accidents, damaged or stolen items.

VIDEOS

Videos of all the bulls will be available on our website and DVAuction.com the middle to late January.

SALE FORMAT

Same as last year, we will not be running the bulls through the ring. The bulls will be sold by video on sale day. All bulls will be penned outside the sale barn by 9 a.m. on sale day and will stay in those pens until the conclusion of the sale.

OPTIONS FOR THOSE UNABLE TO ATTEND THE SALE

The sale will be broadcast live on DVAuction (see details on page 2). You can bid live or leave a proxy bid with DVAuction, however you need to register with them ahead of time. We will also have phone bidding available with the sales reps or family members. Contact us to get registered for a bidder number ahead of time. A bid can be placed with one of us or any of the sales reps. Our dealings are always handled in a 100% honest manner. For sight unseen purchases, we recommend ones that we feel best fit your needs. All sight unseen purchases are satisfaction guaranteed.

DISCOUNTS & VOLUME DISCOUNTS

We are offering \$100 off each bull that you pick up within a week of the sale. We are also offering a volume discount. The first bull purchased will be full price, the 2nd bull will be \$200 off, the 3rd bull will be \$300 off, the 4th bull \$400 off. Any additional bulls will each have a \$500 discount.

INSPECTION

We invite you to come and inspect the cattle at our ranch 30 miles S of I-94 exit 228 anytime. Always feel free to give a call and talk over the bulls as well. Watch our Facebook and Website for all updated information.

TRUCKING

If the purchaser requests at the time of settlement, we will assist in making delivery. We will try to deliver the bulls to the buyer's ranch within a 300-mile radius of Lehr, for free. Long distance deliveries will either get hired and we will pay for half, or we are willing to meet at central locations, if there is a full load going to your area, for free. If they are delivered within one week of the sale, there will be no feed charge.

CANADIAN SALES

We will cover the health papers, semen test, and Canadian delivery to the North Portal or Dunseith, Port of Entries. We will help you in making arrangements to any other Ports of Entry. Border costs are at your expense.

FEEDING ARRANGEMENTS

If purchaser requests, we will feed your bull and have him fertility tested in early April. We would like to have all bulls picked up or delivered no later than May 1. The fee will be \$100 per bull. The bull's ration will be the same or very similar to what they are receiving now. We are not responsible for accidents of cattle kept at

the ranch. We strongly encourage insurance.

TERMS, CONDITIONS AND GUARANTEES

Term and conditions will be the same as those recommended by the American Simmental Association. If you have any questions, please contact us. In no instance shall the seller be responsible for more than the purchase price of the bull. We guarantee to provide you with a sound breeding bull, capable of passing a semen test within 14 months of age. Should any bull fail, we will refund your money, or we will supply you with a bull to use for the upcoming breeding season, plus you will receive full credit at the next year's sale. The bulls are 100% guaranteed for one breeding season, not to exceed 60 days from turnout, provided the bull is managed properly and is in acceptable nutritional health. All other situations beyond our control, (injury, death, lameness, etc.) will be handled on a case-by-case basis. We reserve the right to request the bull to be returned to our ranch and/or have a certified vet inspection done before credit is given. We have always prided ourselves with satisfied customers and will continue to offer the same great customer service.

REGISTRATION PAPERS & INSURANCE

Registration papers will be transferred on all animals. Please leave all information, plus your ASA number at settlement. Let us know within four weeks if you have a name preference for your bull. We encourage insurance on all bulls. You can call Katie at 605-770-9986 for more information. See page 2.

SEMEN RIGHTS

We are selling full possession, full salvage, plus 2/3 semen revenue. This means any semen sold on any of the bulls, TNT Simmentals will receive 1/3 the selling price per unit. We also reserve the right to collect up to 100 units of semen on any of the bulls, for our own use. This semen will be collected at our expense and the buyer's convenience. Please contact us if you have any questions.

HOMOZYGOUS BLACK/HETEROZYGOUS BLACK

A homozygous black bull will only sire black calves when used on black or non-diluter red cows. You will get mostly gray calves when used on yellow cows or red cows that have the dilution gene. A heterozygous black bull will sire both black and red calves when used on non-diluter red cows. When used on yellow or red cows that have the dilution gene you will get roughly half red and the rest will be gray, with some blacks. All bull are homozygous or heterozygous black verified, which is listed in each bulls title.

HOMOZYGOUS POLLED/HETEROZYGOUS POLLED

A homozygous polled bull will be polled and requires both parents to be polled and both to pass on the polled gene to their offspring. The majority of our bulls are polled for several generations. Every bull in the sale is sired by a homozygous polled bull and a polled cow. With a heterozygous polled bull, approximately half the calves will be polled out of horned cows. All single polled animals will be heterozygous. All bull will be polled verified by sale day.

TRAIT LEADER QUALIFICATIONS

You will see the term trait leader used in our comments. This means that animals EPD must be in the top 10% with an accuracy of 60% or higher.

HEALTH

All the bulls were vaccinated with BoviShield Gold 5, One Shot, Ultrabac 7/ Somubac, and treated Valbazen and Dectomax Injectable for deworming and StandGuard and Clean-Up II pour on for pest control and will be given Fusogard at semen testing and prior to delivery. We are a Level 3 Johne's Free Herd.

SCROTAL CIRCUMFERENCE

Each bull was measured to the nearest .5 centimeter and adjusted to 365 days using the ASA recommended daily adjustment of .0543 centimeters. Only bulls with a minimum of 30cm were selected. The ratings for 12 14-month bulls are 30cm and less = poor; 30-35cm = good; and 35cm and over = very good.

GENOMIC ENHANCED EPDS

All bulls have genomics incorporated into their EPDs unless otherwise noted. These EPDs further increase the accuracy of the EPD. A better explanation is on page 3. The ASA registration # is on each Lot. You can search up their latest EPDs on the ASA website. They are updated weekly. BOLT EPDs used were current as of 1/8/2024. We have formatted our EPD boxes to include the percentile ranking for each trait If they rank within the top 50% of the breed. This will make it easier to evaluate each bull.

How does a genomic test benefit our customers?

More accurate EPD - Genomic testing is a way to add information to what is known about an animal's genetic potential even before they have progeny of their own. The commitment to add a genomic test to the genetic predictions enables our customers to have higher-accuracy EPD when they make their buying decisions. One way to think of the information gained is by asking how many progeny would this animal need to provide a similar increase in the accuracy of the EPD for that trait? These are referred to as progeny equivalents. Below is a table of current progeny equivalents. Adding a genomics test is like adding over 25 calving ease records or 22 birth weights on progeny to the EPD. As you can see for some of these traits, a genomically-enhanced EPD is like knowing an entire calf-crop worth of information for bulls or a lifetime of calves for females.

TRAIT	PROGENY	TRAIT	PROGENY	TRAIT	PROGENY
Calving ease	25+	Birth weight	22	Weaning weight	25+
Yearling weight	25+	Maternal calving ease	4	Stayability	15
Docility	25+	Carcass weight	6	Marbling	10
Back fat	11	Ribeye area	8		

Confidence in the pedigree - Each genomic test includes parentage markers to both confirm the animal's own pedigree (if his parents' DNA markers are available) and for future parent verification of their own calves. By testing the DNA for parentage, you can be sure the pedigree is correct.

This sale will be broadcast live on the internet.

DVAuction

Broadcasting Real-Time Auctions

Real time bidding & proxy bidding available.

www.dvauction.com

Watch & Bid online for FREE!

Busy during the sale? Let DVAuction represent your bid!

Visit www.dvauction.com and Register!

1. Create an account under the "create new account" tab
2. Apply for bidding by clicking "apply for bidding" in the upper left corner, at least 24 hours prior to the sale.
3. Tune into the sale on Friday, February 9 at 1:00 CST and make your purchase!

For General Questions Please Contact Our Office:

(402) 316-5460 or support@dvauction.com

High Speed Internet Access Required

The catalog and a video link of each bull is also on the DVAuction website.



MARTIN-TRUDEAU INSURANCE
LIVESTOCK
DIVISION



Katie Williams
kwilliams@juffer.com
Cell 605-770-9986

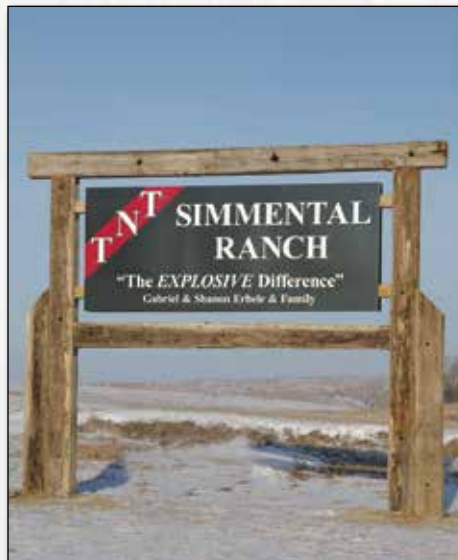
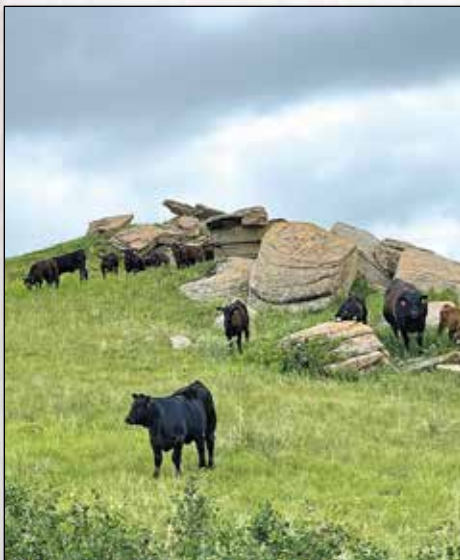
Livestock insurance endorsed by the SD Angus Association, the SD Simmental Association and the SD Hereford Association

We offer livestock insurance for all your needs!

- OPTION 1: All Risk Mortality (ARM)-100% Indemnity Bulls & Females
- OPTION 2: ARM + Accidental External Injury (ACC)-80% Indemnity Bulls Only
- OPTION 3: ARM + Accident Sickness & Disease Infertility (ASD)-80% Indemnity Bulls Only
- OPTION 4: ARM + Comprehensive Infertility (COMP)-85% Indemnity Bulls Only



1531 West Elm Street, P.O. Box 487, Mitchell, SD 57301
605-996-3106 or 1-800-450-3106 * Martin-TrudeauInsurance.com



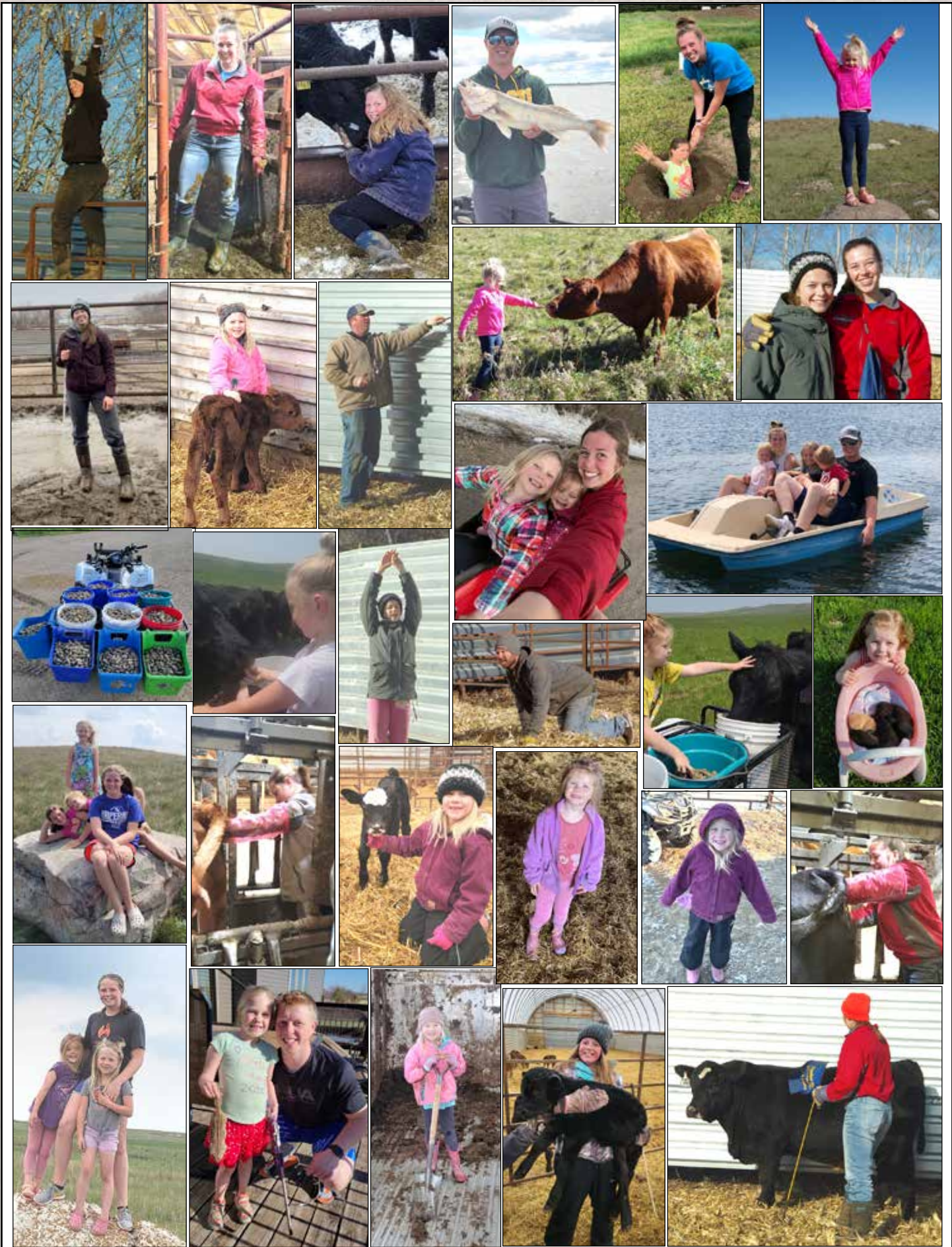
2 - View video of every bull on our website or Facebook!

www.tntsimmentals.com • Facebook/tntsimmentalranch



PEN 9
1, 4, 5, 6, 7
8, 9, 10, 12





4 – View video of every bull on our website or Facebook!

www.tntsimmentals.com • Facebook/tntsimmentalaranch

NEW HERD SIRES AT TNT SIMMENTALS

Clemson Elite 41J - PB SM

WLE Copacetic E02 - MR NLC Upgrade U8676

ASA#: 4068318 Homo Black Homo Polled

EPD	CE	BW	WW	YW	ADG	MCE	Milk	MWW	STAY
	10.9	1.8	90.1	141.9	0.32	5	17.5	52.4	11.8
%			15	10	10			45	

EPD	DOC	CW	YG	MB	BF	REA	SF	API	TI
	7.6	29.4	-0.36	0.19	-0.062	0.91	X	131.4	87.3
%		50		45		45		50	25

We purchased Clemson Elite at the Clemson bull test, where he was their all-time record selling bull. Clemson is truly a diverse, multi-purpose sire who blends real-world performance with elite phenotype. He was the #1 WDA, #3 ADG and #3 total performance, while being the #3 most efficient, weighing 1905 lbs at just under 16 mo of age! We feel he will sire the calves sought after by commercial cattlemen, brings value to every facet of the breed and can be trusted to create performance bulls, high-quality show heifers, and beautiful replacements. Semen is currently available through STgenetics.



WINC Leading Edge 227K - PB SM

W/C Revolution 65G - Welshs Dew It Right067T

ASA#: 4118938 Homo Black Homo Polled

EPD	CE	BW	WW	YW	ADG	MCE	Milk	MWW	STAY
	11.4	1.3	88.8	134	0.28	6.4	33.3	77.6	19.7
%		50	15	20	25	40	2	3	10

EPD	DOC	CW	YG	MB	BF	REA	SF	API	TI
	15.6	29.1	-0.34	0.12	-0.056	0.87	-0.35	143	86.5
%		50					50	30	25

We purchased Leading Edge from Windy Creek Co. in SD. He is an absolute powerhouse that leaves no question about his ability to add pounds and performance, genetically an absolute outlier with impeccable phenotype. He is thick, deep and wide topped, sired by the \$140,000 W/C Revolution. We are very excited about all the facets he brings to our program, a new pedigree with extra eye appeal and growth!



TNT Trademark K629 - 5/8 SM 3/8 AN

Gibbs 7056E Southern Comfort - WBF Significant B132

ASA#: 4105908 Homo Black Homo Polled

EPD	CE	BW	WW	YW	ADG	MCE	Milk	MWW	STAY
	9.7	1.8	100.4	169.2	0.43	5.5	25.7	75.6	17.1
%			2	1	1		35	4	25

EPD	DOC	CW	YG	MB	BF	REA	SF	API	TI
	19.9	60.4	-0.15	0.50	-0.033	0.86	-0.39	152	97
%		3		30		25	25	20	5

Trademark sold to Mallett Simmentals from TX in our sale, and they calve in the fall, so they offered us the opportunity to retain half the pasture rights, and we immediately said yes! He was our #4 WW bull and continued to grow as a top gainer. We ran him on pasture with 35 cows and he did an excellent job and looked better coming off pasture than he did going out, which we love to see on our bulls! His photo was taken right before he was pulled from the cows, and he looked so good! The kids can't wait for some chrome on the calves, that is always fun!



QB Quantify K52 - PB SM

DCR Mr Benchmark F113 - LRS Grade Break 114B

ASA#: 4117066 Homo Black Homo Polled

EPD	CE	BW	WW	YW	ADG	MCE	Milk	MWW	STAY
	9.9	4.7	96.7	150	0.33	4.8	24.5	72.8	18.4
%			4	4	10		40	10	20

EPD	DOC	CW	YG	MB	BF	REA	SF	API	TI
	12.5	36.9	-0.4	0.21	-0.080	0.97	-0.33	142	89
%		40	25	50	40	50	30	35	20

We purchased Quantify from Quandt Brother of Oakes, ND where he was one of their high selling bulls. We like the power and length that Quantify offers, coupled with a little extra stature but lots of body to go with it. We are looking for him to be one of our high performance sires, as he has the powerhouse look and was the 5th high YW bull in their offering out of an ideal uddered dam.

NEW HERD SIRES AT TNT SIMMENTALS

Mr NLC Testament 2661K - 3/4 SM 1/4 AN

LBRS Genesis G69 - MR NLC Upgrade U8676

ASA#: 4169850 Homo Black Homo Polled

EPD	CE	BW	WW	YW	ADG	MCE	Milk	MWW	STAY
	10.3	1.8	102	158	0.35	5.4	26.5	77.3	16.7
%			1	2	10		30	3	30

EPD	DOC	CW	YG	MB	BF	REA	SF	API	TI
	16	69.4	-0.14	0.64	-0.038	0.90	-0.34	157	101
%	15	1		15		20		15	2

We purchased Testament from NLC Simmentals of SD, where he was the high selling bull. He was their favorite bull in the offering, and was their #2 WW, indexing 124 and #1 YW, indexing 124. His granddam was 17 years old, and still had a perfect udder and feet, and she is a maternal sister to TNT Unified's dam, which was another reason we fell in love with this bull, showing what an excellent cow family he comes from. His sire's progeny have topped many sales and he offers lots of growth and performance, depth and thickness in a little larger frame.



KS Calibrate K209 - PB SM

Hook's Full Figures 11F - BCLR Shamwow W611

ASA#: 4055681 Red Homo Polled

EPD	CE	BW	WW	YW	ADG	MCE	Milk	MWW	STAY
	13.4	-0.8	94.4	156	0.39	8.2	29.1	76.1	17.9
%	25	15	10	2	1	20	10	4	25

EPD	DOC	CW	YG	MB	BF	REA	SF	API	TI
	16.6	45	-0.27	0.43	-0.027	1.09	-0.18	168	101
%	10	10		15		15	50	10	3

We purchased Calibrate from Kenner Simmentals, where he was their high selling bull, and he is now in the Genex lineup. He offers impressive mass, volume and power with a little extra frame. His dam has been an exceptional cow for Kenners. She is the dam to KS Outburst and KS Baylor. Full Figures is a hetero black sire that brings an outcross pedigree to the red side. His daughters are getting high marks for impeccable udder quality! We are excited for what he will do for us!

TNT Front Runner K609 - 1/2 SM 1/2 AR

Sutphin's Out In Front 6699 - IR Imperial D948

ASA#: 4105890 Red Homo Polled

EPD	CE	BW	WW	YW	ADG	MCE	Milk	MWW	STAY
	13.1	-2	79.7	130	0.31	7.6	28.1	67.8	17.5
%	45	20	35	25	40	20	25	25	20

EPD	DOC	CW	YG	MB	BF	REA	SF	API	TI
	13.1	29.4	-0.26	0.17	-0.023	0.89	x	136	82
%	40		40			20		45	45

Here is a bull that we were so impressed with that we retained him for our own use. He checked all the boxes, a phenotype standout that is thick, deep, wide topped, docile and he was our #1 WW, #9 for ADG and #8 for WDA and #8 for YW Adj. His dam is just beautiful, extra broody, easy fleshing with excellent udder and hoof quality that raised one of our top WW calves this year, but he got injured and didn't make the sale. We are really excited to see what Front Runner can do to the our operation as a red SimAngus.



CDI Elevation 302K - PB SM

CDI Abundance 391C - TJ Power Grid 363Y

ASA#: 4112178 Red Homo Polled

EPD	CE	BW	WW	YW	ADG	MCE	Milk	MWW	STAY
	9	4.4	94.3	150.2	0.35	7.2	33.3	80.4	22.9
%			10	4	4	30	2	1	1

EPD	DOC	CW	YG	MB	BF	REA	SF	API	TI
	10.1	33	-0.38	0.37	-0.068	0.96	-0.34	159	93
%		35		20		35		15	15

We purchased Elevation from C Diamond Simmentals, where he was their high selling bull. He was part of a flush that were all just exceptional, it was hard to pick a favorite. We love to see flush mates that are all so similar, it shows the consistency in the mating. Abundance is a new pedigree for us, and he is out of one of our favorite red cows with ideal udder quality and great structure and feet, and she offers lots of extra power and to her progeny. Elevation could sire lots of performance, muscle expression and depth of body.

NEW HERD SIRES AT TNT SIMMENTALS

TNT REST EZ L659 - Homo Polled - Homo Black - 1/4 SM 3/4 AN - ASA# 4242201

BORN	B.WT.	205 ADJ.	205 INDEX	A.D.G.	W.D.A.	365 ADJ.	WT. 1-4	SCROTAL									
03/04/23	62	764	104	3.89	3.50	1387	1070	38									
EPD	CE	BW	WW	YW	ADG	MCE	Milk	MWW	STAY	DOC	CW	YG	MB	BF	REA	API	TI
	21.3	-7.9	82.6	139.9	0.36	12.1	29.9	72.4	12.1	20.1	53.8	0.16	0.48	0.042	0.41	159.7	96.3
%	1	1	25	15	10	2	10	10		2	10		30			15	10

SIRE: MILLARS DUKE 816

DAM: TNT J182 - GIBBS 7056E SOUTHERN COMFORT - TNT F108 - TNT REVENANT C217 - TNT D234 - TNT BCR UNIFIED B203

Here is a Rest EZ, sleep-all-night heifer bull and so much more that we are retaining for our own use and will hope to have semen available on him this spring. He was our lightest BW bull calf this year ranking 1 out of 105. We are sold on his sire, he is one of the best Angus sires we have used. His calves have a very docile disposition and explosive growth, with added style and eye appeal. Duke fits into the maternal expectations we demand from our replacements, and he stems from a highly productive dam who has a WW and YW ratio of 114 on her first 4 calves. Reports are his daughters are exceptional. L659 comes from a cow family stacked with extreme calving ease and very high maternal traits. His dam, granddam and great granddam have supreme udder quality. We feel confident he will be easy calving, improve docility, udder quality, without sacrificing growth, but adding it. His daughters should be very productive and attractively made. If interested in semen, give us a call.



TNT Rest EZ L659



Dam to Lot 33



Dam to Lot 81



Granddam to Lot 29



Dam to Lot 18



Dam to Lot 84



Granddam to Lot 24



Dam to Lot 49



Dam to Lot 101



Dam to Lot 44

HERD SIRES



BAR CK AVENGER 9023G, Semen Available



CHSR WAYMAKER 93J



BRIDLE BIT EFFICIENT J160, Semen Available



CONNEALY CRAFTSMAN



DSR INVINCIBLE 81H, Semen Available



GIBBS 7056E SOUTHERN COMFORT



GIBBS 7382E BROAD RANGE



IR IMPERIAL D948



KS DOMINANCE J285



MILLARS DUKE 816



TNT DOZER F439, Semen Available



TNT ASSURANCE J455, Semen Available



TNT COMFORT ZONE J328, Semen Available



TNT IGNITE D370



TNT CONVERGENCE F380

8 - View video of every bull on our website or Facebook!

www.tntsimmentals.com • Facebook/tntsimmentalaranch

HERD SIRES



TNT DIVERSIFY H301



TNT ROYALTY H335



TNT LONG RANGE J408

Purebred Simmental Reference Sires			EPD'S AS OF 1/8/2024. Visit herdbook.org for current EPD's.																
NAME	SIRE X MATERNAL SIRE		CE	BW	WW	YW	ADG	MCE	MM	MWW	ST	DC	CW	YG	MB	BF	REA	API	TI
CHSR WAYMAKER 93J	CDI PERSPECTIVE 238A - RYMO POWER SURGE G39D		15	-1.0	76	115	0.25	7.3	23.0	60.9	22	12	39	-0.09	0.08	-0.038	0.36	149	79
DSR INVINCIBLE 81H	RFS BULLETPROOF B42 - DSR BEEF MAKER X511		18	-1.9	79	132	0.33	10.8	28.4	68.0	18	13	43	-0.41	0.35	-0.094	0.97	165	92
ES ACCELERATION JA110-4	LCDR PROGRESSIVE 106G - REMINGTON LOCK N LOAD		15	0.2	101	168	0.42	7.1	27.0	77.3	15	14	56	-0.28	0.29	-0.063	1.00	156	100
MR SR MIC DROP G1534	MR SR 71 RIGHT NOW E1538 - JSB BIG CASINO 336Y		13	-0.6	85	140	0.35	11.2	27.4	69.6	20	21	26	-0.49	0.00	-0.095	0.98	148	85
RFS HEADLINER H126	CCR COWBOY CUT 5048Z - TNT PUNCH Y260		10	3.3	82	130	0.29	6.3	28.0	68.9	14	12	41	-0.27	0.29	-0.045	0.90	134	84
ROCKIN H CAPTIVATE J75	THSF LOVER BOY B33 - CCR COWBOY CUT 5048Z		17	-1.2	99	143	0.28	8.9	30.2	79.4	16	20	27	-0.49	0.13	-0.092	1.03	152	97
TNT DIVERSIFY H301	GIBBS 7382E BROAD RANGE - TNT PUNCH Y260		10	2.4	99	157	0.36	7.1	57.7	76.9	20	17	58	-0.18	0.20	-0.039	0.88	149	92
TNT LONG RANGE J408	GIBBS 7382E BROAD RANGE - WBF SIGNIFICANT B132		15	2.3	90	150	0.37	8.2	23.9	68.7	18	14	58	-0.45	0.17	-0.066	1.50	148	89
TNT ROYALTY H335	IR IMPERIAL D948 - WS PRIME TIME B6		10	1.3	80	126	0.29	5.3	23.9	63.6	12	15	35	-0.29	0.48	-0.060	0.78	144	89
Simmental Breed Average			11	1.4	77	115	0.24	5.7	22.9	61.0	15	12	28	-0.39	0.15	-0.070	0.87	131	79
SimAngus Reference Sires																			
NAME	SIRE X MATERNAL SIRE		CE	BW	WW	YW	ADG	MCE	MM	MWW	ST	DC	CW	YG	MB	BF	REA	API	TI
BAR CK AVENGER 9023G	GW VINDICATOR 312E - BAR CK TEBOW 1006X		15	-1.4	84	136	0.33	7.2	25.5	67.1	15	13	36	-0.27	1.07	-0.061	0.70	184	106
BRIDLE BIT EFFICIENT J160	HOOK'S EAGE 6E - SAND RANCH HAND		9	0.6	89	134	0.28	3.6	22.5	66.9	19	17	29	-0.45	0.37	-0.071	1.11	155	93
GIBBS 7056E S COMFORT	BALDRIDGE BRONC - HOOK'S INFINITI 10U		15	-0.9	100	163	0.40	9.5	23.9	73.3	16	20	61	0.02	0.50	0.008	0.67	159	100
GW HILGER ONE 454H	GW MOVIN ON 183C - GW YUKON JACK 612B		11	-0.1	99	152	0.33	4.6	26.5	75.9	20	17	53	-0.26	0.45	-0.052	0.95	158	97
KS DOMINANCE J285	SITZ STELLAR 726D - LFE THE RIDDLER 323B		9	0.3	87	144	0.36	6.9	27.3	72.0	13	16	42	0.02	0.61	0.027	0.60	145	93
TNT ASSURANCE J455	GIBBS 7056E S COMFORT - TNT TANKER U263		10	2.0	112	171	0.37	7.6	28.8	84.2	23	17	60	-0.26	0.26	-0.059	1.01	152	98
TNT COMFORT ZONE J328	GIBBS 7056E S COMFORT - S D S NIGHTRIDE 611D		15	-1.6	91	143	0.32	6.3	25.7	71.3	14	18	52	-0.02	0.60	-0.013	0.52	157	98
TNT CONVERGENCE F380	TNT UNION D385 - S A V BISMARCK 5682		6	4.1	102	159	0.36	4.0	23.9	74.6	11	16	51	-0.21	0.21	-0.039	0.25	113	87
TNT DOZER F439	TNT 90 PROOF Z401 - ASR SUBSTANCE X009		2	5.7	96	153	0.36	1.5	24.6	72.1	17	17	60	-0.13	0.12	-0.057	0.60	110	78
Hybrid Breed Average			13	0.4	75	116	0.25	6.7	23.8	61.0	14	12	34	-0.22	0.34	-0.040	0.69	131	80
PB AN & PB AR Reference Sires																			
NAME	SIRE X MATERNAL SIRE		CE	BW	WW	YW	ADG	MCE	MM	MWW	ST	DC	CW	YG	MB	BF	REA	API	TI
BIEBER CL STOCKMARKET E119	PIE STOCKMAN 4051 - ANDRAS FUSION R236		16	-4.9	79	134	0.34	11.7	24.0	63.4	12	19	26	0.17	1.18	0.079	0.30	181	109
CONNELLY CRAFTSMAN	SITZ RESILIENT 10208 - CONNEALY NIOBRARA 5451		15	-0.9	100	169	0.43	4.8	40.5	90.5	10	12	79	0.13	1.00	0.032	0.73	158	103
MILLARS DUKE 816	B BAR WINDY 7 3575 - TOMBSTONE 050		14	-3.2	115	182	0.41	7.5	28.5	86.0	6	18	78	0.40	0.40	0.068	0.18	120	97
SUTPHIN'S OUT IN FRONT 6699	5L OUT IN FRONT 5084-60D - LEACHMAN DENIRO		14	-0.7	79	131	0.33	8.5	27.6	67.0	11	13	31	-0.08	0.06	0.019	0.69	107	78



Dam to TNT Ignite & TNT Dozer



Dam to Comfort Zone and Her Acceleration Heifer



Dam to TNT Regal and Lots 73, 80 & 83



Dam to TNT Unified and Granddam to Lots 5, 49 & 56



Dam to TNT Exemplify (2023 High Seller) and His Full Sister



Dam to TNT Long Range and the Craftsman ETs.

SALE BULLS



Lot 1



Lot 2



Lot 3



Lot 4



Lot 5



Lot 6



Lot 7



Lot 8



Lot 9



Lot 10



Lot 11



Lot 12



Lot 13



Lot 14



Lot 15

10 – View video of every bull on our website or Facebook!

www.tntsimmentals.com • Facebook/tntsimmentalranch

SALE BULLS

BLACK PUREBRED SIMMENTAL BULLS

LOT 1 L675 - Homo Polled - Homo Black - PB Simmental - ASA# 4242119

BORN		B.WT.		205 ADJ.		205 INDEX		A.D.G.		W.D.A.		365 ADJ.		WT. 1-4		SCROTAL	
03/07/23		88		856		116		3.55		3.81		1424		1155		40.5	
EPD	CE	BW	WW	YW	ADG	MCE	Milk	MWW	STAY	DOC	CW	YG	MB	BF	REA	API	TI
	9.6	1.3	105.0	159.0	0.34	6.8	27.4	79.7	20.1	15.0	58.2	-0.22	0.3	-0.03	1.08	157.6	99.5
%		50	1	2	5	35	20	2	10	15	2		25		15	15	4

SIRE: TNT ASSURANCE J455

DAM: TNT H108 - GIBBS 7382E BROAD RANGE - TNT D257 - MR NLC AVENUE 3088A - TNT R77 - HC HUMMER 12M

Here is a bull that has been a standout from birth and was our 4th highest WW bull. His sire was the high seller in our 2022 sale going to Crosshair Simmentals. His calves are high performance and consistently docile. He currently ranks in the top 1% for WW, YW, MWW and Stay and comes from one of the best and most productive cow families in our herd. His dam, H108, is a daughter of Gibbs Broad Range. He is a highly proven sire we own with Select Sires. He is a CE, growth, maternal and carcass trait leader.

LOT 2 L439 - Homo Polled - Homo Black - PB Simmental - ASA# 4241871

BORN		B.WT.		205 ADJ.		205 INDEX		A.D.G.		W.D.A.		365 ADJ.		WT. 1-4		SCROTAL	
03/09/23		88		762		102		3.42		3.52		1310		1060		37.5	
EPD	CE	BW	WW	YW	ADG	MCE	Milk	MWW	STAY	DOC	CW	YG	MB	BF	REA	API	TI
	10.6	1.2	85.6	123.8	0.24	6.2	26.6	69.3	17.4	13.5	47.8	-0.13	0.17	-0.019	0.76	136.9	83.7
%		50	25	35		45	25	20	30	30	10		50			40	35

SIRE: TNT DIVERSIFY H301

DAM: TNT E248 - TNT BCR UNIFIED B203 - TNT B61 - TNT BOOTLEGGER Z268 - TNT W115 - TNT KNOCK OUT R206

A long sided, deep bodied Diversify son with a touch more frame. We retained his sire for our own use, then sold him to Alta Genetics and we really like his calves. Diversify was our # 2 WW, and #3 YW bull that has a little extra frame and is sired by Broad Range and TNT A99, a cow that has made a strong impact in our herd while selling bulls to some top end customers, the dam to Lot 15. His dam, E248 is a model cow. The Unified daughters are always easy to pick out. They are very attractive and broody with ideal udders. Her past four sons have all sold in the sale, going to many excellent customers.

LOT 3 L472 - Homo Polled - Homo Black - PB Simmental - ASA# 4241906

BORN		B.WT.		205 ADJ.		205 INDEX		A.D.G.		W.D.A.		365 ADJ.		WT. 1-4		SCROTAL	
03/13/23		102		835		112		4.17		3.96		1503		1175		40	
EPD	CE	BW	WW	YW	ADG	MCE	Milk	MWW	STAY	DOC	CW	YG	MB	BF	REA	API	TI
	7.0	4.1	92.9	145.0	0.33	4.2	27.9	74.3	10.8	15.3	60.9	-0.3	-0.09	-0.051	1.2	105.7	79.3
%			10	10	10		20	10		15	1				5		

SIRE: TNT DIVERSIFY H301

DAM: TNT F576 - NPS STATUS C186 - TNT B147 - MR NLC UPGRADE U8676 - TNT L9 - JF NEW DIMENSION 903J

A phenotype standout with extra length and stature, a high performance bull as our 10th high WW. He is sired by Diversify, a bull whose calves are all stamped the same and really grow. He is a trait leader for WW, YW and ADG, with top 3% or higher WW, YW, ADG, MWW and CW. His dam, F576 has been excellent for us, with a 110 WW on her first 4 calves, and her Convergence son last year was our co-high seller, going to Trade Wind Ranch. Her dam is an ET daughter of our great L9 donor and NLC Upgrade, that has a 364-day calving interval, with many daughters in the herd.

LOT 4 L474 - Homo Polled - Homo Black - PB Simmental - ASA# 4241903

BORN		B.WT.		205 ADJ.		205 INDEX		A.D.G.		W.D.A.		365 ADJ.		WT. 1-4		SCROTAL	
03/13/23		88		796		106		3.48		3.64		1353		1080		37.5	
EPD	CE	BW	WW	YW	ADG	MCE	Milk	MWW	STAY	DOC	CW	YG	MB	BF	REA	API	TI
	13.1	-0.1	87.5	144.2	0.35	6.3	27.5	71.1	13.2	13.8	54.4	-0.25	0.14	-0.058	0.91	137.4	88.0
%	30	25	20	10	4	45	20	15		25	3				45	40	25

SIRE: ES ACCELERATION JA110-4

DAM: TNT F222 - NPS STATUS C186 - TNT C114 - JF SIGNATURE 3268A - TNT Y117 - MR NLC SUPERIOR S6018

A very complete, thick, attractive made, medium framed bull sired by Acceleration, a new herd sire from Eichacher Simmentals that really brought lots of performance to his progeny. He averaged 106 WW ratio on his 22 calves, and has high growth EPD's with WW, YW, ADG, MWW, CW, and TI in the top 5% or higher. His dam has been exceptional, with past, top WW sons selling to Chris Albers and Cory Schlecht. He is a bull bred for growth and excellent replacements.

LOT 5 L478 - Homo Polled - Homo Black Dot - PB Simmental - ASA# 4241920

BORN		B.WT.		205 ADJ.		205 INDEX		A.D.G.		W.D.A.		365 ADJ.		WT. 1-4		SCROTAL	
03/14/23		90		766		102		3.69		3.58		1356		1060		38	
EPD	CE	BW	WW	YW	ADG	MCE	Milk	MWW	STAY	DOC	CW	YG	MB	BF	REA	API	TI
	12.7	-0.7	83.5	122.1	0.24	9.4	27.9	69.5	23.6	18.3	25.0	-0.36	0.0	-0.029	1.11	147.1	82.3
%	30	20	30	35		10	20	20	1	2					15	25	40

SIRE: MR SR MIC DROP G1534

DAM: TNT G137 - CLRS E-TRADE 405E - TNT E188 - HSR LEAD OFF C705 - NLC Z2058 - TNT TANKER U263

A medium framed bull with lots of natural thickness, stacked with an excellent disposition. His sire offers calving ease along with trait leading YW, ADG, and DOC. His semen very limited and is in high demand now that he is deceased. His dam is a moderate framed, beautiful uddered heifer that goes back to our exceptional E188 cow, who has a 108 WW and 109 YW ratio, and her dam is the dam to TNT Unified. She was one of our best cows, with many daughters in the herd. He comes from a pedigree stacked with CE and growth and is backed by an excellent cow family.

SALE BULLS

LOT 6 L482 - Hetero Polled - Homo Black - PB Simmental - ASA# 4241918

BORN	B.WT.	205 ADJ.	205 INDEX	A.D.G.	W.D.A.	365 ADJ.	WT. 1-4	SCROTAL									
03/14/23	94	788	105	3.58	3.65	1360	1080	36									
EPD	CE	BW	WW	YW	ADG	MCE	Milk	MWW	STAY	DOC	CW	YG	MB	BF	REA	API	TI
	8.0	3.1	97.0	146.4	0.31	5.2	29.3	77.6	19.4	8.7	41.9	-0.4	-0.11	-0.089	0.97	125.9	82.9
%			4	10	15		10	3	10		15	50		30	30		40

SIRE: TNT ASSURANCE J455

DAM: TNT F152 - NPS STATUS C186 - TNT X27 - MR NLC SUPERIOR S6018 - TNT T146 - TNT GUNNER N208

A heavy muscled, deep bodied, extra stylish bull sired by our high seller from 2022, going to Crosshair Simmentals. This sire group is just excellent, like their sire. He comes from the highest performance cow family on our place, with many sisters raising top WW calves year after year, including the dam to Lot 70. His dam has ideal udder and hoof quality and has been exceptional, with a 108 WW and 106 YW ratio. Her daughter is the 1st calf heifer dam to Lot 47 and her maternal sister, A99, is the dam to TNT Diversify and Lot 15, another Assurance son. Crossing this tremendous cow family on Assurance created exceptional calves.

LOT 7 L485 - Homo Polled - Hetero Black Blaze - PB Simmental - ASA# 4241917

BORN	B.WT.	205 ADJ.	205 INDEX	A.D.G.	W.D.A.	365 ADJ.	WT. 1-4	SCROTAL									
03/14/23	84	802	107	4.17	3.83	1470	1135	40.5									
EPD	CE	BW	WW	YW	ADG	MCE	Milk	MWW	STAY	DOC	CW	YG	MB	BF	REA	API	TI
	18.9	-2.9	84.9	122.7	0.24	11.0	28.6	71.0	18.5	16.0	32.6	-0.34	0.07	-0.073	0.8	152.7	88.0
%	1	3	25	35		2	15	15	20	10	40			50		20	25

SIRE: ROCKIN H CAPTIVATE J75

DAM: TNT E564 - BCLR WILD CARD B906 - HSR C712 - TNT TANKER U263 - HSR Z812 - PVF 6S17 HY TOUCHDOWN

An extra-long bodied, thick topped, attractive made, hetero black blaze face son of the popular red Captivate bull. His sire is the hot outcross red sire that sold for \$95,000, that we were contending bidder on, trying real hard to own him. He turned out to be a CE sire that also sires lots of growth, as a trait leader for CE, WW and YW after only one calf crop. His dam is a slightly larger framed cow that has 3 daughters doing a great job in our herd and a beautiful bred heifer as well. She is out of a Tanker daughter that we purchased from Hanson Simmentals.

LOT 8 L518 - Homo Polled - Homo Black - PB Simmental - ASA# 4241948

BORN	B.WT.	205 ADJ.	205 INDEX	A.D.G.	W.D.A.	365 ADJ.	WT. 1-4	SCROTAL									
03/19/23	94	863	115	4.59	4.16	1597	1210	36									
EPD	CE	BW	WW	YW	ADG	MCE	Milk	MWW	STAY	DOC	CW	YG	MB	BF	REA	API	TI
	9.1	2.6	106.9	175.2	0.43	6.1	33.1	86.4	19.4	17.0	50.6	-0.38	0.23	-0.068	1.18	153.4	99.4
%			1	1	1	45	2	1	10	5	4		40		10	20	4

SIRE: TNT ASSURANCE J455

DAM: TNT F205 - RYMO EXTRA UP U60D - TNT B55 - MR NLC UPGRADE U8676 - TNT S17 - TNT FIVE STAR P275

A beef bull supreme with length, volume, muscle and massive dimension, with top end performance as our #4 WW, #6 ADG, and #5 WDA and YW bull. He resembles his sire, who is just truly exceptional. He has EPD's in the top 1% of the breed for WW, YW, MWW and Stay. His calves indexed an average of 107 on 23, with only two below 100 index at 98, truly a tremendous sire group. His dam is one of our best, a broody made, larger framed cow with a 113 WW and 111 YW ratio on her first 4 calves. The grandam is an ET daughter of Upgrade and our high maternal donor S17. He comes from a truly great cow family and is sure to add growth and sire highly productive replacements.

LOT 9 L521 - Homo Polled - Hetero Black - PB Simmental - ASA# 4241952

BORN	B.WT.	205 ADJ.	205 INDEX	A.D.G.	W.D.A.	365 ADJ.	WT. 1-4	SCROTAL									
03/20/23	94	831	111	4.07	3.97	1482	1150	36.5									
EPD	CE	BW	WW	YW	ADG	MCE	Milk	MWW	STAY	DOC	CW	YG	MB	BF	REA	API	TI
	10.5	2.0	87.6	136.8	0.31	5.9	30.2	73.9	15.4	16.0	50.3	-0.22	0.38	-0.07	0.68	146.3	90.7
%			20	15	15	50	10	10		10	5		20			25	15

SIRE: TNT ROYALTY H335

DAM: TNT D243 - TNT TANNERITE B369 - TNT A99 - TNT PUNCH Y260 - TNT X27 - MR NLC SUPERIOR S6018

Here is a hetero black, extra long bodied, extra thick Royalty son, with a touch more frame, that was the 11th high for WW. Royalty is out of a top-notch Prime Time daughter with a 107 WW and 109 YW ratio, raising our top selling red bulls two years in a row. Her dam raised our high seller in 2019, TNT Defender, whose calves and daughters are outstanding. His dam is a broody, ideal uddered, medium framed Tannerite daughter with top 1% milk and a 105 WW ratio and 365-day calving interval on her 5 calves. She is a daughter of A99, which makes her a maternal sister to TNT Diversify and Lot 15.

LOT 10 L563 - Homo Polled - Homo Black - PB Simmental - ASA# 4241992

BORN	B.WT.	205 ADJ.	205 INDEX	A.D.G.	W.D.A.	365 ADJ.	WT. 1-4	SCROTAL									
04/07/23	98	799	107	3.50	3.64	1360	990	38									
EPD	CE	BW	WW	YW	ADG	MCE	Milk	MWW	STAY	DOC	CW	YG	MB	BF	REA	API	TI
	9.8	2.8	83.9	123.2	0.25	5.9	24.0	65.8	14.1	8.8	29.7	-0.44	0.03	-0.091	0.92	120.0	78.5
%			25	35	45	50	45	30			50	30		15	40		

SIRE: RFS HEADLINER H126

DAM: TNT E553 - TNT BCR UNIFIED B203 - SYS Z24 - TNT TANKER U263 - SYS U822 - GCF FIRST DREAM P13

An extra long, extra thick, ideal phenotype bull of medium frame that is out of RSF Headliner, a bull we purchased at Rydeen Simmentals as a high performance PB sire. He was their 2nd high WW indexing 117 and 3rd high YW at 116, out of the very popular, female making Cowboy Cut. His dam is a broody, deep bodied Unified daughter that has the ideal udders we have grown to expect from the Unified daughters. His granddam is an excellent Tanker daughter that we purchased from SYS Simmentals that has a 110 WW ratio and 105 YW ratio, that we sold to Hanging H Ranch and she continued on to be a great producer for them.

SALE BULLS

LOT 11 L584 - Homo Polled - Homo Black - PB Simmental - ASA# 4242012

BORN	B.WT.	205 ADJ.	205 INDEX	A.D.G.	W.D.A.	365 ADJ.	WT. 1-4	SCROTAL
04/24/23	96	854	114	3.75	3.92	1454	1000	38

EPD	CE	BW	WW	YW	ADG	MCE	Milk	MWW	STAY	DOC	CW	YG	MB	BF	REA	API	TI
		7.2	4.1	94.8	143.9	0.31	4.7	23.6	70.9	11.7	14.2	49.9	-0.35	0.11	-0.078	1.0	118.8
%			5	10	15		45	15		20	5			50	25		30

SIRE: RFS HEADLINER H126

DAM: TNT G707 - CLRS AFTER SHOCK 604 A - TNT D193 - TNT TANKER U263 - TNT Z128 - TNT TUITION U238

A moderate framed, extra thick and deep, front runner for performance that was our #8 for WW. He is sired by RSF Headliner, a bull we purchased at Rydeen Simmentals, that was their 2nd high WW, indexing 117 and 3rd high YW at 116, out of a productive TNT Punch dam who has a 106 WW and 108 YW ratio with a 365-day calving interval on her 5 calves. His dam, G707 is named Sweetie for a reason, she is the kids pet cow that loves to eat a treat of cake! She has been a productive cow for us, with a 108 WW and a 105 YW ratio on her first 3 calves and goes back to a great L9 x Tuition ET dam.

LOT 12 L585 - Homo Polled - Homo Black - PB Simmental - ASA# 4242014

BORN	B.WT.	205 ADJ.	205 INDEX	A.D.G.	W.D.A.	365 ADJ.	WT. 1-4	SCROTAL
04/25/23	94	816	109	4.22	3.98	1491	1010	38.5

EPD	CE	BW	WW	YW	ADG	MCE	Milk	MWW	STAY	DOC	CW	YG	MB	BF	REA	API	TI
		9.9	2.8	90.8	141.9	0.32	6.5	25.8	71.1	16.8	12.6	56.0	-0.45	0.04	-0.07	1.45	130.7
%			10	10	10	40	30	15	35	40	2	25			1	50	35

SIRE: TNT LONG RANGE J408

DAM: TNT H740 - TNT CONVERGENCE F380 - TNT E566 - BCLR WILD CARD B906 - HSR C806 - TJ POWER GRID 363Y

A moderate framed, performance driven bull with extra depth of rib. His sire offers lots of length with extra performance and maternal value. His dam, H740, is a 2nd calf heifer out of our powerful herdsire that brings home many of our top WW and YW calves, year after year. She was our #1 WW and #6 YW heifer and is deep bodied with an excellent udder, with a 108 WW ratio on her first 2 calves. Her Broad Range son last year was one of our favorites, selling to Wade Henderson. Her dam is the dam to Lot 13, another Long Range son, who has a WW ratio of 107 and YW of 111 and her sister is the dam to Lot 20, another tremendous cow with a 109 WW and 111 YW ratio on her 4 calves. Their dam has a 112 WW ratio. What a tremendous, high performance cow family!

LOT 13 L603 - Homo Polled - Homo Black - PB Simmental - ASA# 4242023

BORN	B.WT.	205 ADJ.	205 INDEX	A.D.G.	W.D.A.	365 ADJ.	WT. 1-4	SCROTAL
05/02/23	80	781	104	4.17	3.81	1448	942	38

EPD	CE	BW	WW	YW	ADG	MCE	Milk	MWW	STAY	DOC	CW	YG	MB	BF	REA	API	TI
		14.9	-0.1	79.7	128.9	0.31	9.5	26.3	66.0	18.8	16.3	19.8	-0.3	0.02	-0.038	0.77	140.7
%	15	25	40	25	15	10	25	30	15	10						35	50

SIRE: TNT LONG RANGE J408

DAM: TNT E566 - BCLR WILD CARD B906 - HSR C806 - TJ POWER GRID 363Y - HSR T883 - BROOKS ABOVE PAR

Here is a thick, deep, high performance bull with extra muscle expression whose sire sold to STgenetics in our 2022 sale, and he was never able to freeze semen, so we were able to keep him for use on our pastures and we are happy we did. He did get injured the 1st day of breeding season and we had to pull him from pasture for a while, making some of his calves late, like this one, a May 2nd calf, but you would sure never know it! This cow family is just tremendous. His dam is an extremely easy keeping cow with a 107 WW and 111 YW ratio. She is the granddam to Lot 12, also another young Long Range calf. Her maternal sister is the dam Lot 20, a tremendous Pride daughter with a 109 WW and 111 YW ratio and their dam has a 112 WW and 106 YW ratio. He should sire lots of performance!

BLACK 3/4 SIMANGUS BULLS

LOT 14 L415 - Homo Polled - Homo Black - 3/4 SM 1/4 AN - ASA# 4241848

BORN	B.WT.	205 ADJ.	205 INDEX	A.D.G.	W.D.A.	365 ADJ.	WT. 1-4	SCROTAL
03/04/23	84	761	102	4.33	3.69	1454	1130	38

EPD	CE	BW	WW	YW	ADG	MCE	Milk	MWW	STAY	DOC	CW	YG	MB	BF	REA	API	TI
		13.3	1.1	91.1	139.4	0.3	9.2	25.2	70.7	16.8	19.0	78.7	-0.12	0.1	-0.052	0.86	128.2
%	40		10	15	30	20	40	15	25	3	1			30	25		45

SIRE: TNT DIVERSIFY H301

DAM: TNT H101 - GIBBS 7056E SOUTHERN COMFORT - TNT E206 - TNT BCR UNIFIED B203 - TNT B11 - S A V 707 RITO 9969

A long bodied, powerful 4th generation SimAngus with a little extra stature, out of Diversify, a bull we retained for our own use that we later sold to Alta Genetics, a trait leader for WW, YW and ADG, with top 3% or higher WW, YW, ADG, MWW and CW. His dam is a beautiful, moderate and broody cow with excellent hoof and udder quality, backed by the CE and performance of Southern Comfort and a beautiful Unified dam with a 90 BW ratio and a 364-day calving interval on her 4 calves.

LOT 15 L436 - Homo Polled - Homo Black - 3/4 SM 1/4 AN - ASA# 4241868

BORN	B.WT.	205 ADJ.	205 INDEX	A.D.G.	W.D.A.	365 ADJ.	WT. 1-4	SCROTAL
03/09/23	90	797	107	4.70	4.00	1549	1205	39

EPD	CE	BW	WW	YW	ADG	MCE	Milk	MWW	STAY	DOC	CW	YG	MB	BF	REA	API	TI
		11.4	1.1	90.1	138.0	0.3	8.1	30.4	75.3	23.5	12.5	55.7	-0.41	0.2	-0.098	1.12	145.7
%			10	15	30	30	10	5	1	50	10	10		2	5	30	35

SIRE: TNT ASSURANCE J455

DAM: TNT A99 - TNT PUNCH Y260 - TNT X27 - MR NLC SUPERIOR S6018 - TNT T146 - TNT GUNNER N208

Here is a bull that has so much depth, length and thickness to go with his royally bred pedigree, who is a phenotype and genetic standout. He was our 4th high ADG, 9th high YW and 15th high WDA. His sire is so consistent and powerful, just what we expected from him! We had 23 calves out of him that had an avg weaning index of 107, showing what a tremendous sire group this is! His dam, A99, is an exceptional cow with a perfect calving interval and a 104 WW and 105 YW ratio on her 9 calves. She is the dam to TNT Diversify that we sold to Alta Genetics, and we retained his full brother for use on heifers this past spring. We almost lost her this summer to a freak foot injury, but she fought through and still did an excellent job raising her calf and bred back for next year. She is also the granddam to Lot 9.

SALE BULLS



Lot 16



Lot 17



Lot 18



Lot 19



Lot 20



Lot 21



Lot 22



Lot 23



Lot 24



Lot 25



Lot 26



Lot 27



Lot 28



Lot 29



Lot 30

14 – View video of every bull on our website or Facebook!

www.tntsimmentals.com • Facebook/tntsimmentalranch

SALE BULLS

LOT 16 L683 - Homo Polled - Homo Black - 3/4 SM 1/4 AN - ASA# 4242071

BORN	B.WT.	205 ADJ.	205 INDEX	A.D.G.	W.D.A.	365 ADJ.	WT. 1-4	SCROTAL
03/10/23	80	827	113	4.14	4.00	1489	1200	38

EPD	CE	BW	WW	YW	ADG	MCE	Milk	MWW	STAY	DOC	CW	YG	MB	BF	REA	API	TI
	14.0	0.1	90.6	131.3	0.25	8.6	27.8	72.9	17.7	14.8	40.6	-0.35	0.17	-0.08	0.87	136.2	85.5
%	35	45	10	25		25	20	10	20	25	35	15		10	25	45	30

SIRE: TNT ASSURANCE J455

DAM: TNT F143 - TNT BCR UNIFIED B203 - TNT W42 - TNT KNOCK OUT R206 - TNT S1 - TNT GUNNER N208

A powerful made, deep bodied, very docile bull. Our grandkids named his dam Sweetie 2, and her dam was Sweetie because they are so tame. They are more than docile cows. His dam has a WW ratio of 107 on her 4 calves with a 367-day calving interval and his granddam has a WW ratio of 107 and 368-day calving interval. We cannot brag enough about his sire, our own high selling bull in 2022 going to Crosshair Simmentals. His 1st calf crop has moved him to the top 1% for WW, YW, MWW and Stay. He comes from a tremendous TNT Tanker daughter whose dam, granddam and daughters are all exceptional. One of our very best cow families. Here is a sure bet for performance and exceptional replacements.

LOT 17 L463 - Homo Polled - Homo Black - 3/4 SM 1/4 AN - ASA# 4241900

BORN	B.WT.	205 ADJ.	205 INDEX	A.D.G.	W.D.A.	365 ADJ.	WT. 1-4	SCROTAL
03/12/23	74	806	108	4.03	3.69	1451	1100	35

EPD	CE	BW	WW	YW	ADG	MCE	Milk	MWW	STAY	DOC	CW	YG	MB	BF	REA	API	TI
	15.6	-1.6	80.9	132.9	0.33	8.9	26.2	66.7	14.8	11.0	49.2	-0.2	0.59	-0.011	1.04	157.3	92.6
%	20	20	30	20	15	20	35	25	50		15		20		10	15	15

SIRE: TNT AMPLIFY J357

DAM: TNT J745 - TNT CONVERGENCE F380 - TNT A18 - S A V PRIORITY 7283 - TNT Y81 - S A V BISMARCK 5682

ASA# 3942048

A 4th generation SimAngus, thick, deep, longer bodied bull that is real complete in his makeup, all with a CE look, sired by our all out heifer bull we retained to use on our heifers, a Broad Range son out of a tremendous TNT Finale daughter. His dam is a 1st calf heifer that is real broody and deep bodied, out of an exceptional cow that had a 106 WW and 108 YW ratio on her 8 calves, with a 365-day calving interval. She has many daughters in the herd and sold sons to top customers like Joe Wagner, Stuart Nielsen, Dan Moch and Doug LaMont.

LOT 18 L466 - Homo Polled - Homo Black - 3/4 SM 1/4 AN - ASA# 4241897

BORN	B.WT.	205 ADJ.	205 INDEX	A.D.G.	W.D.A.	365 ADJ.	WT. 1-4	SCROTAL
03/12/23	98	785	105	4.34	3.84	1479	1145	37.5

EPD	CE	BW	WW	YW	ADG	MCE	Milk	MWW	STAY	DOC	CW	YG	MB	BF	REA	API	TI
	6.9	3.0	100.6	156.6	0.35	5.1	27.8	78.0	18.8	14.7	57.8	-0.18	0.13	-0.037	0.88	126.5	85.6
%			2	2	10		20	2	10	25	4				25		30

SIRE: TNT ASSURANCE J455

DAM: TNT D192 - TNT TANKER U263 - TNT X40 - TNT DUAL FOCUS T249 - TNT U48 - S A V FINAL ANSWER 0035

Another excellent Assurance son, a 4th generation SimAngus, that is long bodied, extra docile and has a touch more frame. Assurance not only met, but exceeded our high expectations of him. He averaged 107 WW ratio on his 23 calves in our herd and 104 on his owner, Crosshair Simmentals 22 calves, with only five of the 45 falling just under 100 index. What a consistently strong sire group! His dam has been exceptional for us, with a 109 WW and 107 YW ratio and a 363-day calving interval. She is a beautiful daughter of the cow maker TNT Tanker. The Tanker daughters last forever, we just love them!

LOT 19 L695 - Homo Polled - Homo Black Baldy - 3/4 SM 1/4 AN - ASA# 4242226

BORN	B.WT.	205 ADJ.	205 INDEX	A.D.G.	W.D.A.	365 ADJ.	WT. 1-4	SCROTAL
03/12/23	68	757	103	4.18	3.66	1426	1090	38.5

EPD	CE	BW	WW	YW	ADG	MCE	Milk	MWW	STAY	DOC	CW	YG	MB	BF	REA	API	TI
	16.1	-2.9	84.4	140.7	0.35	11.8	29.8	71.8	18.6	20.5	26.0	-0.31	0.29	-0.043	0.84	153.5	89.8
%	15	10	20	15	10	3	10	10	15	1		25		45	30	20	20

SIRE: MR SR MIC DROP G1534

DAM: TNT J220 - GIBBS 7056E SOUTHERN COMFORT - SYS B1 - CONNEALY FINAL PRODUCT - SYS Z97 - SYS STUNNER X25

A very stylish made bull that we can recommend for use on heifers. He ratioed 85 for BW and his sire and maternal sire both worked great on heifers. His sire, Mic Drop, has become very popular and unfortunately died and his semen is in very short supply. He is known for his CE, added growth, docility and phenotype. His dam, J220, is a daughter of our standout herd sire S. Comfort, who has been exceptional for us, a calving ease sire who is a WW, YW, and ADG trait leader whose daughters have the most perfect udders and are very docile and broody made. She ratioed 113 for WW herself and her dam has a WW ratio of 109 on 6 calves and is the dam to Lot 39, who has been a standout since birth.

LOT 20 L473 - Homo Polled - Homo Black - 3/4 SM 1/4 AN - ASA# 4241905

BORN	B.WT.	205 ADJ.	205 INDEX	A.D.G.	W.D.A.	365 ADJ.	WT. 1-4	SCROTAL
03/13/23	70	791	106	4.41	3.79	1497	1125	39

EPD	CE	BW	WW	YW	ADG	MCE	Milk	MWW	STAY	DOC	CW	YG	MB	BF	REA	API	TI
	16.3	-0.4	93.5	146.2	0.33	10.3	26.2	72.8	17.2	11.9	49.6	-0.14	0.28	-0.036	0.68	147.2	90.4
%	15	40	5	10	15	10	35	10	25		15					25	20

SIRE: GIBBS 7056E SOUTHERN COMFORT

DAM: TNT F567 - TNT PRIDE C232 - HSR C806 - TJ POWER GRID 363Y - HSR T883 - BROOKS ABOVE PAR

Here is bull with what we love to see: extra thickness, muscle shape and stoutness in a moderate framed, fault-free package, a bull that has been a standout since birth. His sire just continues to hit a home run each and every year, siring some of the absolute best. He has a tremendous set of CE and growth EPD's, as a trait leader for WW, YW, ADG and DOC. His dam is a broody made Pride daughter with a perfect udder that has a 109 WW and 111 YW ratio on her first 4 calves, she just hits a home run year after year. Her top performing Eagle son sold to Quandt Brother last year. Her dam has been excellent as well; broody made and perfectly uddered with a 361-day calving interval and a 112 WW and 106 YW ratio on her calves and she is the granddam to Lot 13 and great granddam to Lot 12. What a powerful cow family!

SALE BULLS

LOT 21 L471 - Homo Polled - Hetero Black - 3/4 SM 1/8 AN 1/8 AR - ASA# 4241907

BORN	B.WT.	205 ADJ.	205 INDEX	A.D.G.	W.D.A.	365 ADJ.	WT. 1-4	SCROTAL
03/13/23	76	798	107	3.90	3.70	1423	1100	36

EPD	CE	BW	WW	YW	ADG	MCE	Milk	MWW	STAY	DOC	CW	YG	MB	BF	REA	API	TI
	16.8	-1.8	66.9	100.2	0.21	7.5	24.3	57.7	22.8	11.2	28.9	-0.1	0.09	-0.035	0.28	139.0	70.5
%	10	20				40	50		1							40	

SIRE: CHSR WAYMAKER 93J

DAM: TNT G728 - TNT PRODIGY B366 - TNT Z103 - MR NLC COMPLETE X0080 - TNT T148 - G A R RETAIL PRODUCT

Here is a 4th generation SimAngus, a super thick, super deep, phenotype standout in a more moderate framed package. He is sired by our new herdsire we purchased from Crosshair Simmentals, a dark red, stylish made son of Perspective. We really like the style and eye-appeal that Waymaker puts in to his calves. His dam, G728, is a fancy made, ideal uddered daughter of our performance driven sire, Prodigy. She goes back to Z103, a cow that has produced many daughters that have made an impact in the herd and sold many sons in the sale. Her dam was another female that stayed in the herd for 13 years, while maintaining a 364-day calving interval. Such a tremendous cow family.

LOT 22 L492 - Ho Polled - Het Blk Blz - 3/4 SM 5/32 AR 1/16 AN 1/32 CS - ASA# 4241925

BORN	B.WT.	205 ADJ.	205 INDEX	A.D.G.	W.D.A.	365 ADJ.	WT. 1-4	SCROTAL
03/15/23	62	752	101	4.02	3.56	1395	1050	39.5

EPD	CE	BW	WW	YW	ADG	MCE	Milk	MWW	STAY	DOC	CW	YG	MB	BF	REA	API	TI
	20.3	-4.8	61.9	98.3	0.23	12.9	33.1	64.0	20.1	13.2	15.0	-0.3	0.14	-0.058	0.56	146.8	75.0
%	2	3				1	3	40	5	40		30		30		30	

SIRE: DSR INVINCIBLE 81H

DAM: TNT H112 - LEACHMAN CADILLAC L025A - TNT F161 - TNT TANNERITE B369 - TNT B143 - TNT PUNCH Y260

A smooth made, hetero black, blaze faced, maternally driven heifer bull with the extra length and we see from his sire. We are extremely happy with Invincible, an outcross to our program sired by Bulletproof that works excellent on heifers while still injecting that growth that you see from Bulletproof, and his dam has been a top cow for Deckerts, with a 107 WW and 107 YW ratio on her 8 calves, who is now in their Donor pen. His dam, H112, is a moderate framed, perfect uddered Cadillac daughter, that goes back to B143, an L9 x Punch ET that is the dam to Lot 27, who raised the top WW heifer out of 134 heifers when she was just a first calf heifer.

LOT 23 L504 - Homo Polled - Homo Black - 3/4 SM 1/4 AN - ASA# 4241940

BORN	B.WT.	205 ADJ.	205 INDEX	A.D.G.	W.D.A.	365 ADJ.	WT. 1-4	SCROTAL
03/17/23	70	774	104	4.32	3.77	1465	1105	39

EPD	CE	BW	WW	YW	ADG	MCE	Milk	MWW	STAY	DOC	CW	YG	MB	BF	REA	API	TI
	18.0	-1.8	82.0	130.6	0.3	11.8	30.1	71.0	13.6	16.5	21.7	-0.31	0.17	-0.051	0.74	135.0	83.7
%	10	20	30	25	30	3	10	15		10		5		30	45	45	40

SIRE: MR SR MIC DROP G1534

DAM: TNT H110 - TNT FINAL ANSWER W215 - TNT F108 - TNT REVENANT C217 - TNT D234 - TNT BCR UNIFIED B203

A 7th generation SimAngus who is a medium framed, very stylish made heifer bull prospect with the extra muscle expression his sire possesses. Mic Drop was our blaze faced choice to use on heifers as well as some select cows. He offers calving ease along with trait leading YW, ADG, and DOC, and high maternal traits. He is now deceased and his semen is in high demand. His dam, H110, is a larger framed, ideal uddered, TNT Final Answer daughter, who is a CE specialist, with top 1% CE and MCE. Her dam is an ideal uddered Revenant daughter, who is the granddam to L659, the bull we are retaining for use on heifers.

LOT 24 L507 - Homo Polled - Homo Black - 3/4 SM 1/4 AN - ASA# 4241941

BORN	B.WT.	205 ADJ.	205 INDEX	A.D.G.	W.D.A.	365 ADJ.	WT. 1-4	SCROTAL
03/17/23	86	804	108	3.62	3.60	1384	1055	35.5

EPD	CE	BW	WW	YW	ADG	MCE	Milk	MWW	STAY	DOC	CW	YG	MB	BF	REA	API	TI
	9.5	2.1	107.1	165.5	0.37	6.5	27.7	81.2	15.9	9.9	63.3	-0.39	0.01	-0.073	1.33	123.0	89.2
%			1	1	4		25	1	35		2	10		10	1		20

SIRE: TNT ASSURANCE J455

DAM: TNT H132 - GIBBS 7382E BROAD RANGE - TNT E212 - TNT BCR UNIFIED B203 - TNT B124 - TNT PUNCH Y260

Here is a 6th generation SimAngus, a very stylish made, deep middled more moderate Assurance son. Assurance is an extra thick, extremely deep bodied, high-performance bull, which was our #6 for WW in 2021. From the day he was born, we picked him to be one of our best and we were right! He transmits his stunning phenotype to his calves and they grow! He has EPD's in the top 1% for WW, YW, MWW, Stay and top 4% for ADG, CW and TI. His dam, H132, is a broody, deep sided 2nd calver with a 111 WW ratio on her first two calves, raising the 2nd high WW bull last year. Her dam is a broody, moderate framed Unified daughter that is a total head turner on pasture every summer. A power packed mating with high maternal as well.

LOT 25 L516 - Homo Polled - Homo Black - 3/4 SM 1/4 AN - ASA# 4244428

BORN	B.WT.	205 ADJ.	205 INDEX	A.D.G.	W.D.A.	365 ADJ.	WT. 1-4	SCROTAL
03/19/23	90	826	110	4.50	4.04	1546	1175	40

EPD	CE	BW	WW	YW	ADG	MCE	Milk	MWW	STAY	DOC	CW	YG	MB	BF	REA	API	TI
	13.7	0.3	77.8	130.5	0.33	8.4	29.8	68.6	11.7	16.0	40.0	-0.11	0.42	-0.024	0.54	134.3	84.0
%	40	50	40	25	15	25	10	20		15	35		40			50	40

SIRE: RFS HEADLINER H126

DAM: TNT H804 - TNT LEGACY D345 - TNT F770 - TNT FIRESTONE Y362

A long-bodied, eye appealing bull with extra dimension that was our 10th high for WDA and YW and 12th for ADG. He is out of the Cowboy Cut son we purchased from Rydeen Simmentals. We purchased him as a high performance PB sire. He was their 2nd high WW indexing 117 and 3rd high YW at 116. His daughters look tremendous and we are excited to see what their first calf crop is like. His dam is a broody, stylish made 2nd calf heifer that has ideal udder quality, in a moderate frame. She had a tremendous bull last year going to Randy Ben. Her dam is a beautiful TNT Defiant daughter. We only used Defiant one season on our heifers and we sure wish we could get him back, his daughters are some of our absolute best producing cows.

SALE BULLS

LOT 26 L520 - Homo Polled - Homo Black - 3/4 SM 1/4 AN - ASA# 4241954

BORN	B.WT.	205 ADJ.	205 INDEX	A.D.G.	W.D.A.	365 ADJ.	WT. 1-4	SCROTAL
03/20/23	102	792	106	4.45	3.81	1504	1105	35.5

EPD	CE	BW	WW	YW	ADG	MCE	Milk	MWW	STAY	DOC	CW	YG	MB	BF	REA	API	TI
		7.3	4.6	101.0	163.4	0.39	4.9	28.5	78.9	17.2	14.6	63.7	-0.29	0.27	-0.061	1.13	131.0
%			1	1	2		20	2	25	25	2	30		20	4		20

SIRE: TNT ASSURANCE J455

DAM: TNT H741 - TNT LEGACY D345 - TNT F587 - TNT DEFIANT C237 - TNT D248 - TNT 90 PROOF Z401

An attractive made, longer bodied, bull that was our 14th high ADG, with the same docile temperament that his sire possesses. Assurance is a major league sire that comes from cow power beyond compare. His dam is a Tanker daughter with a 110 WW and 110 YW ratio on her 10 calves. Her dam has a 110 WW and 109 YW ratio on her 10 calves and her dam has a 111 WW and 110 YW ratio on her 11 calves. And his maternal sister has a 112 WW and 113 YW, and is the dam to Lot 70, as well as her full sister has a 115 WW and 114 YW ratio on her 4 calves. WOWZA!! This bulls dam was our 8th high WW and 2nd high YW heifer herself, and her dam was our 3rd high YW herself, while having a 110 WW and 115 YW ratio, back to a R77 x 90 Proof ET dam.

LOT 27 L723 - Homo Polled - Hetero Black - 3/4 SM 3/16 AN 1/16 AR- ASA# 4242028

BORN	B.WT.	205 ADJ.	205 INDEX	A.D.G.	W.D.A.	365 ADJ.	WT. 1-4	SCROTAL
03/20/23	92	781	106	3.55	3.60	1349	1045	39

EPD	CE	BW	WW	YW	ADG	MCE	Milk	MWW	STAY	DOC	CW	YG	MB	BF	REA	API	TI
		9.6	1.0	65.6	96.2	0.19	5.8	27.3	60.0	22.3	14.3	17.9	-0.41	0.12	-0.075	0.82	125.8
%							25		1	30		10		10	30		

SIRE: BRIDLE BIT EFFICIENT J160

DAM: TNT B143 - TNT PUNCH Y260 - TNT L9 - JF NEW DIMENSION 903J - TNT J1 - TNT AFTERSHOCK G404

A bull that has caught our eye since birth. His sire, Bridle Bit Efficient, has been excellent for us. He was the 3rd highest gainer and top bull for feed efficiency at the Bridle Bit sale in 2022. The dam to L723 is an ET daughter of TNT Punch and our L9 donor, the dam to the great TNT Gunner and granddam to TNT Tanker. She has been an excellent producer for us with a top 4% milk EPD and a 363-day calving interval on 8 calves. This is a bull that should produce top notch steers, and long lasting, productive, feed efficient daughters.

LOT 28 L569 - Homo Polled - Homo Black - 3/4 SM 1/4 AN - ASA# 4241997

BORN	B.WT.	205 ADJ.	205 INDEX	A.D.G.	W.D.A.	365 ADJ.	WT. 1-4	SCROTAL
04/11/23	76	778	104	3.71	3.72	1371	998	37

EPD	CE	BW	WW	YW	ADG	MCE	Milk	MWW	STAY	DOC	CW	YG	MB	BF	REA	API	TI
		16.8	-0.3	75.1	119.0	0.27	8.5	25.0	62.3	19.2	11.9	49.1	-0.21	0.31	-0.025	0.98	146.5
%	10	40	50	45	45	25	45	50	10		15				15	30	50

SIRE: TNT LONG RANGE J408

DAM: TNT E261 - TNT BCR UNIFIED B203 - TNT S32 - S A V 004 DENSITY 4336 - TNT P143 - HC HUMMER 12M

A thick topped, fancy made, deep sided 3rd generation SimAngus bull with extra style and neck extension. His sire is a phenotype standout that sold to STgenetics in 2022, a thick, deep bodied, wide topped bull with a solid set of EPD's combining CE, growth and maternal, out of the donor dam to all the Craftsman flush mates. His dam is a beautiful, easy flushing, perfect uddered Unified daughter that has sold all of her calves as bulls. Her dam was excellent for us as well, with progeny selling to top notch customers like Joe Wagner, Jeff Dewitz and Stuart Nielsen.

BLACK 5/8 SIMANGUS BULLS

LOT 29 L410 - Homo Polled - Homo Black - 5/8 SM 3/8 AN - ASA# 4241850

BORN	B.WT.	205 ADJ.	205 INDEX	A.D.G.	W.D.A.	365 ADJ.	WT. 1-4	SCROTAL
03/04/23	90	797	107	4.29	3.63	1483	1110	37

EPD	CE	BW	WW	YW	ADG	MCE	Milk	MWW	STAY	DOC	CW	YG	MB	BF	REA	API	TI
		9.8	1.6	90.9	140.6	0.31	4.7	29.0	74.4	17.4	15.8	57.9	-0.1	0.62	-0.035	0.66	152.3
%			10	15	25		15	10	20	15	4		15			20	10

SIRE: TNT COMFORT ZONE J328

DAM: TNT J151 - GIBBS 7393E TRIBUTE - TNT F212 - JF SIGNATURE 3268A - TNT T34 - K C F BENNETT TOTAL

A medium framed 5th generation SimAngus bull with that extra style and docility his sire injects into his calves. His sire has been exceptional. He was our #1 WW bull in 2022 that sold to Bow & Arrow Ranch that was a real standout with flawless phenotype and an A+ disposition. He works on heifers, has huge growth, maternal and carcass traits. His dam is a broody, medium framed, perfect uddered 1st calf heifer. Her dam has a 104 WW, 102 YW and 360-day calving interval, and her dam is the dam to TNT Punch, as well as other son selling to top repeat customers.

LOT 30 L424 - Homo Polled - Homo Black - 5/8 SM 3/8 AN - ASA# 4241857

BORN	B.WT.	205 ADJ.	205 INDEX	A.D.G.	W.D.A.	365 ADJ.	WT. 1-4	SCROTAL
03/07/23	84	826	110	4.01	3.88	1468	1175	37

EPD	CE	BW	WW	YW	ADG	MCE	Milk	MWW	STAY	DOC	CW	YG	MB	BF	REA	API	TI
		10.3	0.4	91.1	139.0	0.3	6.4	26.8	72.2	13.2	13.5	64.7	-0.23	0.41	-0.056	0.98	135.7
%			10	15	30		30	10		35	2	50	40	30	15	45	20

SIRE: TNT CONVERGENCE F380

DAM: TNT F136 - G A R PROPHECT - TNT D113 - JF SIGNATURE 3268A - TNT W39 - MR NLC SUPERIOR S6018

STUD alert! He is deep, he is thick and he is wide, while being our 13th high WW bull and one of our top for gain, everything we strive for in our bulls. His sire produces calves like him year after year and we were more than pleased with his daughters, while being a trait leader for WW, YW and ADG, with top 10% MWW. His dam, F136, perfect uddered Prophet daughter with a 365-day calving interval and a 103 WW and 104 YW ratio. We have a full sister to him in the bred heifer pen and she is tremendous. He is a 3/4 brother to our high selling bull last year going to Crosshair Simmentals, and they just love him!

SALE BULLS



Lot 31



Lot 32



Lot 33



Lot 34



Lot 35



Lot 36



Lot 37



Lot 38



Lot 39



Lot 40



Lot 41



Lot 42



Lot 43



Lot 44



Lot 45

SALE BULLS

LOT 31 L674 - Homo Polled - Homo Black - 5/8 SM 3/8 AN - ASA# 4242088

BORN	B.WT.	205 ADJ.	205 INDEX	A.D.G.	W.D.A.	365 ADJ.	WT. 1-4	SCROTAL
03/07/23	90	790	108	4.48	3.96	1507	1200	37

EPD	CE	BW	WW	YW	ADG	MCE	Milk	MWW	STAY	DOC	CW	YG	MB	BF	REA	API	TI
	%	11.7	0.5	85.6	137.7	0.33	6.2	25.0	67.7	11.2	12.3	29.4	-0.2	0.39	-0.044	0.54	131.6
			20	15	15		45	25		50			45	45		50	25

SIRE: BAR CK AVENGER 9023G

DAM: TNT G125 - NPS STATUS C186 - TNT Y63 - S A V FINAL ANSWER 0035 - TNT W67 - TNT DUAL FOCUS T249

Here is a long-bodied, stylish-made, performance bull with a little extra frame that was the 13th high ADG and 18th high YW. His sire has been a true heifer bull for us and doesn't sacrifice growth. He ranks in the top 1% for Marbling, Shear Force and TI. Unfortunately, he was struck by lightning this summer. Thankfully we have some semen collected on him. His dam has been an expert producer. She has a 110 WW and 112 YW ratio on 3 calves and a 344-day calving interval. He is a bull that ties so much together.

LOT 32 L676 - Homo Polled - Homo Black - 5/8 SM 3/8 AN - ASA# 4242177

BORN	B.WT.	205 ADJ.	205 INDEX	A.D.G.	W.D.A.	365 ADJ.	WT. 1-4	SCROTAL
03/07/23	72	797	108	3.99	3.73	1435	1130	39

EPD	CE	BW	WW	YW	ADG	MCE	Milk	MWW	STAY	DOC	CW	YG	MB	BF	REA	API	TI
	%	17.3	-1.9	88.1	137.7	0.31	9.0	25.3	69.4	14.4	13.9	47.4	-0.17	0.5	-0.015	0.89	155.6
	10	20	15	15	25	20	40	20		30	15		30		20	15	10

SIRE: TNT COMFORT ZONE J328

DAM: TNT J136 - GIBBS 7393E TRIBUTE - TNT E198 - CCR WIDE RANGE 9005A - TNT C015 - TNT TANKER U263

Here is a very docile, phenotype standout. He has been one that caught our eye all summer. We feel he should work on bigger heifers. He ratioed 90 for BW and his dam had a 66# BW and ratioed 87. BW does not take a back seat for performance, maternal, or carcass traits. His sire was our #1 WW and 5th high YW for our 2022 sale selling to Bow & Arrow Ranch. They were as impressed with his calves as we were, and collected semen on him, and have some for sale. I know we are going to use him a lot more. His dam, J136, is an ideally made, very docile 1st calf heifer, who is bred to calve early next spring. This is a bull that ties it all together.

LOT 33 L449 - Homo Polled - Homo Black - 5/8 SM 3/8 AN - ASA# 4241885

BORN	B.WT.	205 ADJ.	205 INDEX	A.D.G.	W.D.A.	365 ADJ.	WT. 1-4	SCROTAL
03/10/23	80	769	103	3.41	3.48	1314	1045	33.5

EPD	CE	BW	WW	YW	ADG	MCE	Milk	MWW	STAY	DOC	CW	YG	MB	BF	REA	API	TI
	%	17.8	-0.7	79.0	125.7	0.29	10.3	27.7	67.5	15.2	14.5	57.5	-0.09	0.2	-0.015	0.79	135.3
	10	35	35	35	35	10	25	25	45	25	5				35	45	50

SIRE: TNT LONG RANGE J408

DAM: TNT C005 - MOHNEN IMPRESSIVE 1093 - TNT A50 - TNT TUITION U238 - TNT X34 - TNT DOUBLE VISION T205

A 5th generation SimAngus bull bred for calving ease and maternal traits that is deep, thick and real complete in his makeup, sired by a bull that really impressed us with his first calf crop. Long Range sold to STgenetics in 2022, and unfortunately they were never able to get him to freeze semen. We are glad we got to run him on pasture. He is a high growth Broad Range son with EPD's for YW, ADG, DOC, CW, and REA in the top 5% or higher. His dam is a beautiful, deep sided, no miss cow with a 105 WW and 103 YW ratio on her 7 bull calves while maintaining a 365-day calving interval, with bulls in past sales selling to top customers like Wade Henderson, Miller Ranch, Joe Wagner and Jason King.

LOT 34 L692 - Homo Polled - Homo Black - 5/8 SM 3/8 AN - ASA# 4242093

BORN	B.WT.	205 ADJ.	205 INDEX	A.D.G.	W.D.A.	365 ADJ.	WT. 1-4	SCROTAL
03/12/23	98	860	117	4.14	4.03	1522	1200	39

EPD	CE	BW	WW	YW	ADG	MCE	Milk	MWW	STAY	DOC	CW	YG	MB	BF	REA	API	TI
	%	7.5	5.3	105.0	173.8	0.43	4.9	30.4	83.6	13.9	11.7	69.9	-0.1	0.41	-0.02	0.92	132.1
			1	1	1		10	1			1		40		20	50	10

SIRE: KS DOMINANCE J285

DAM: TNT G140 - RYMO EXTRA UP U60D - TNT D129 - TNT TUITION U238 - TNT Z41 - S A V BISMARCK 5682

A high performance, long bodied bull with a little extra frame. He was our 3rd high WW bull that continued as our 12th high for WDA and YW. His sire was a standout at the Kenner Simmentals 2022 sale and their high selling black bull. His dam has been a top producer for us. She has a WW ratio of 113 on her 1st 3 calves with a calving interval of 359 days. This is a bull that is a sure bet to add pounds to his calves and a little more frame.

LOT 35 L486 - Homo Polled - Homo Black - 5/8 SM 3/8 AN - ASA# 4241923

BORN	B.WT.	205 ADJ.	205 INDEX	A.D.G.	W.D.A.	365 ADJ.	WT. 1-4	SCROTAL
03/14/23	82	738	99	4.19	3.51	1408	1040	34.9933

EPD	CE	BW	WW	YW	ADG	MCE	Milk	MWW	STAY	DOC	CW	YG	MB	BF	REA	API	TI
	%	12.9	0.8	91.3	143.5	0.33	8.5	28.9	74.3	19.7	15.7	37.5	-0.19	0.35	-0.045	0.6	148.9
	45		10	10	15	25	15	10	10	15	40		50	45		25	20

SIRE: TNT ASSURANCE J455

DAM: TNT H138 - BASIN PAYWEIGHT 1682 - TNT D262 - LRS UNLIMITED 752A - TNT S17 - TNT FIVE STAR P275

Here is a long bodied, stylish made, docile Assurance son. Assurance was our high selling bull in 2022 going to Crosshair Simmentals and they love him! His calves are all so similar and his dam and his sisters are all at the top of production year after year. He is so docile and really injects his performance and his personality onto his calves. His dam, H138, is a moderate, broody made 2nd calf heifer out of Basin Payweight, and ABS sire known for adding extra muscle, substance and fleshing ability to his progeny. Her dam is an S17 x Unlimited ET that had a 107 WW ratio.

SALE BULLS

LOT 36 L487 - Homo Polled - Homo Black - 5/8 SM 3/8 AN - ASA# 4241913

BORN	B.WT.	205 ADJ.	205 INDEX	A.D.G.	W.D.A.	365 ADJ.	WT. 1-4	SCROTAL
03/14/23	94	777	104	3.68	3.63	1366	1075	39.5

EPD	CE	BW	WW	YW	ADG	MCE	Milk	MWW	STAY	DOC	CW	YG	MB	BF	REA	API	TI
	9.2	1.8	92.2	138.7	0.29	6.4	30.1	76.1	16.1	14.6	53.9	-0.38	0.21	-0.097	1.0	127.4	85.3
%			10	15	35		10	4	35	25	10	10		2	10		35

SIRE: TNT ASSURANCE J455

DAM: TNT C006 - ELLINGSON LEGACY M229 - TNT A37 - A A R TEN X 7008 S A - TNT Y92 - LCOC-GLXY YIELD GRADE390

A thick, long bodied, powerhouse 4th generation SimAngus bull with bred in performance. His sire was our #1 sire group for weaning indexing a 107 average on 23 calves. He is such a consistent, powerful sire, just what we expected from him! He has EPD's in the top 1% for WW, YW, MWW and Stay, with top 10% or higher for ADG, Milk, DOC, CW, REA and TI. His dam is one of our favorites. She is phenotypically and genetically outstanding, with a production record to match, with a 364-day calving interval, a 107 WW and 106 YW ratio. She has had 5 sons in past sales, with two going to our great customer of 38 years, Stuart Nielsen.

LOT 37 L488 - Homo Polled - Homo Black - 5/8 SM 3/8 AN - ASA# 4241916

BORN	B.WT.	205 ADJ.	205 INDEX	A.D.G.	W.D.A.	365 ADJ.	WT. 1-4	SCROTAL
03/14/23	86	818	109	4.17	3.87	1485	1145	37.5

EPD	CE	BW	WW	YW	ADG	MCE	Milk	MWW	STAY	DOC	CW	YG	MB	BF	REA	API	TI
	12.9	1.3	94.7	147.3	0.33	7.8	26.8	74.0	19.0	12.3	48.1	-0.19	0.3	-0.037	0.82	145.1	89.5
%	45		4	10	15	35	30	10	10	50	15				30	30	20

SIRE: TNT ASSURANCE J455

DAM: TNT E176 - TNT BCR UNIFIED B203 - TNT A93 - MR NLC COMPLETE X0080 - TNT S32 - S A V 004 DENSITY 4336

A 4th generation SimAngus who is an extra thick, long bodied bull with larger stature, in a well balanced phenotype. His sire is a performance powerhouse, out of the most prolific cow family to walk the ranch. His maternal sister, dam and granddam all boast top WW and YW ratios, raising some of our best year after year. His maternal sister is the dam to Lot 70, another powerhouse bull. His dam is a picture perfect daughter of TNT Unified, who sires exceptional daughters, who has a 104 WW and 109 YW ratio on 5 calves. This is a very complimentary mating stacked with growth and very strong maternal backing.

LOT 38 L708 - Homo Polled - Homo Black - 5/8 SM 3/8 AN - ASA# 4242089

BORN	B.WT.	205 ADJ.	205 INDEX	A.D.G.	W.D.A.	365 ADJ.	WT. 1-4	SCROTAL
03/15/23	84	778	106	4.05	3.75	1426	1105	34.5

EPD	CE	BW	WW	YW	ADG	MCE	Milk	MWW	STAY	DOC	CW	YG	MB	BF	REA	API	TI
	14.2	2.2	94.7	147.3	0.33	6.2	27.9	75.1	15.5	15.3	50.5	-0.33	0.44	-0.088	0.88	146.8	92.9
%	30		4	10	15		20	5	40	20	15	20	40	5	25	30	15

SIRE: TNT ASSURANCE J455

DAM: TNT G127 - TNT REVENANT C217 - TNT E134 - TNT BCR UNIFIED B203 - TNT C082 - JF SIGNATURE 3268A

A long, thick made, very docile bull. His sire is one to build a herd around. He was our high seller in 2022. His dam is no doubt one of the best Tanker daughters we have ever owned and his sire, S. Comfort, has been exceptional for us, a heifer bull with high growth and perfect uddered, outstanding, very docile daughters. We were so anxious to get calves out of Assurance and were not disappointed, a very consistent sire group that are made in his image and have his quiet disposition. His dam, G127, is the daughter of a bull that ABS bought from us, a top 1% CE sire who ranks in the top 2% for milk and Doc, a current trait leader for CE, BW, Milk, MCE, Doc and MB, whose daughters are some of the nicest udders you can find anywhere. She had a standout son in the 2022 sale, going to Dan Moch.

LOT 39 L501 - Homo Polled - Homo Black - 5/8 SM 3/8 AN - ASA# 4241933

BORN	B.WT.	205 ADJ.	205 INDEX	A.D.G.	W.D.A.	365 ADJ.	WT. 1-4	SCROTAL
03/16/23	88	885	118	3.87	4.08	1505	1200	35.5

EPD	CE	BW	WW	YW	ADG	MCE	Milk	MWW	STAY	DOC	CW	YG	MB	BF	REA	API	TI
	10.0	1.4	97.2	152.8	0.35	7.8	34.2	82.3	17.6	13.0	68.7	-0.25	0.17	-0.044	1.19	132.6	88.2
%			3	4	10	35	2	1	20	45	1	45		45	3	50	25

SIRE: TNT ASSURANCE J455

DAM: SYS B1 - CONNEALY FINAL PRODUCT - SYS Z97 - SYS STUNNER X25 - SYS R509 - PPSR NOPHALT 20H

A larger framed, extra long, bull with extra thickness and dimension in a phenotypically outstanding package, while finishing as the #1 WW bull and continuing as our #8 WDA. His sire just really injects his calves with length, depth, a little more stature and tons of performance. Assurance was our high seller in 2022 going to Crosshair Simmentals, and they couldn't be happier with him. They have semen for sale on him, and I know we will be Aling very heavy to him after seeing this first calf crop, how good they look and how they finish at the top of the class for WW. That is no surprise with how prolific the cow family is. The dam to this bull is a larger, broody made cow that has been excellent. She has a 109 WW and 107 YW ratio and has sold sons to some of our top repeat customers like Alley Ranch, Bow and Arrow Ranch and Stuart Nielsen. She is also the granddam to Lot 19.

LOT 40 L511 - Homo Polled - Homo Black - 5/8 SM 3/8 AN - ASA# 4241950

BORN	B.WT.	205 ADJ.	205 INDEX	A.D.G.	W.D.A.	365 ADJ.	WT. 1-4	SCROTAL
03/19/23	88	761	102	4.27	3.69	1444	1075	38

EPD	CE	BW	WW	YW	ADG	MCE	Milk	MWW	STAY	DOC	CW	YG	MB	BF	REA	API	TI
	14.1	1.7	103.4	178.9	0.47	7.2	28.6	80.7	12.3	16.8	62.2	-0.2	0.35	-0.053	0.89	142.4	97.2
%	35		1	1	1	45	15	1		10	3		50	30	20	35	5

SIRE: ES ACCELERATION JA110-4

DAM: TNT H106 - WERNER FLAT TOP 4136 - TNT F142 - TNT REVENANT C217 - TNT D213 - TNT BCR UNIFIED B203

A stylish, very attractive made 7th generation SimAngus bull that is out of a long bodied, stylish bull that was a top seller in 2022 from Eichacher Simmentals, out of their most prolific donor cow that is a real powerhouse. He averaged 106 WW ratio on his 22 calves, and has high growth EPD's with WW, YW, ADG, MWW, CW, and TI in the top 3% or higher. We were very strong on heifers out of him, but they are just as impressive as the bulls. His dam is a beautiful perfect uddered, broody, ideally made 2nd calver that raised one of the top WW heifers last year. He has extremely high growth and high maternal traits, an excellent mating.

SALE BULLS

LOT 41 L728 - Homo Polled - Homo Black - 5/8 SM 3/8 AN - ASA# 4242113

BORN	B.WT.	205 ADJ.	205 INDEX	A.D.G.	W.D.A.	365 ADJ.	WT. 1-4	SCROTAL
03/22/23	78	749	102	3.52	3.52	1312	1015	39

EPD	CE	BW	WW	YW	ADG	MCE	Milk	MWW	STAY	DOC	CW	YG	MB	BF	REA	API	TI
		13.7	-2.2	67.0	109.8	0.27	8.6	28.7	63.0	16.7	13.9	22.1	-0.03	0.61	0.013	0.37	153.6
%	40	15			45	25	15	45	30	30			20			20	35

SIRE: KS DOMINANCE J285

**DAM: TNT G208 - RYMO EXTRA UP U60D - TNT D134 - MOHNEN IMPRESSIVE
1093 - TNT B108 - TNT SCHOLAR X321**

Here is a 5th generation SimAngus, a very stylish-made, long bodied bull with an A+ disposition. His sire was the high selling black bull at the 2022 Kenner Simmental sale. He is an ET son of the highly proven Sitz Stellar. His full brother was the 2nd high selling black bull at that sale as well, a very consistent standout mating. The dam to this bull is a broody made, excellent uddered cow that comes from a very productive cow family. She is sired by Rymo Extra Up, whose daughters are excellent. He ranks in the top 1% for Milk & MWW, with the top 10% or higher for Doc, YW, ADG, CW and BF.

LOT 42 L530 - Homo Polled - Homo Black - 5/8 SM 3/8 AN - ASA# 4241962

BORN	B.WT.	205 ADJ.	205 INDEX	A.D.G.	W.D.A.	365 ADJ.	WT. 1-4	SCROTAL
03/25/23	94	859	115	4.10	4.04	1514	1150	38

EPD	CE	BW	WW	YW	ADG	MCE	Milk	MWW	STAY	DOC	CW	YG	MB	BF	REA	API	TI
		9.5	2.6	88.7	134.8	0.29	6.3	28.1	72.4	11.9	15.5	51.1	-0.19	0.27	-0.043	0.8	119.1
%			15	20	35		20	10		15	10			45	35		40

SIRE: TNT CONVERGENCE F380

**DAM: TNT G187 - RYMO EXTRA UP U60D - TNT B43 - TNT TANKER U263 - TNT
Y92 - LCOC-GLXY YIELD GRADE390**

A 4th generation SimAngus, who is a performance powerhouse, as our 5th high WW, 10th high WDA and 15th high YW, with massive volume, thickness, extra dimension and length, with the docile personality of his sire, a TNT Union son out of a tremendous Bismarck daughter that has a 107 WW and 104 YW ratio on her 8 calves, and his maternal sister is a centerpiece, front-end, 1st calf heifer. His calves just stand out in the pasture, with such eye appeal and top growth. He is a trait leader for WW, YW and ADG, and also has top 5% MWW and 3% CW. We lost him during last years breeding season due to an injury, so this is his last calf crop to be offered for sale. His dam, G187, is a moderate, broody, ideal uddered cow with 105 WW ratio and her dam has sold sons to great customers like Alley Ranch and Perhus Brothers.

LOT 43 L533 - Homo Polled - Homo Black - 5/8 SM 3/8 AN - ASA# 4241964

BORN	B.WT.	205 ADJ.	205 INDEX	A.D.G.	W.D.A.	365 ADJ.	WT. 1-4	SCROTAL
03/26/23	90	767	103	4.43	3.75	1476	1065	33

EPD	CE	BW	WW	YW	ADG	MCE	Milk	MWW	STAY	DOC	CW	YG	MB	BF	REA	API	TI
		12.1	0.4	93.8	156.1	0.39	6.5	27.5	74.3	10.6	10.6	59.7	-0.15	0.77	-0.047	0.77	156.1
%			5	3	2		25	10			4		10	45	40	15	2

SIRE: BAR CK AVENGER 9023G

**DAM: TNT J210 - GIBBS 7382E BROAD RANGE - TNT A17 - TNT SCHOLAR X321 -
TNT Y19 - LCOC-GLXY YIELD GRADE390**

Here is a 4th generation SimAngus that offers some extra frame, in a stylish, clean-fronted package that was a top contender for ADG. His sire offers lots of CE with excellent growth and maternal value, with top 1% MB and TI and top 2% API. His dam is a broody, ideal uddered 1st calf heifer that was the #2 YW heifer out of 132. Her dam is one of our best cows, with a 363-day calving interval, and a 110 WW and 108 YW ratio on her 9 calves. She raised our #2 WW heifer this year and still had a perfect udder. She has sold sons to top customers like Miller Brother and Stuart Nielsen.

LOT 44 L542 - Homo Polled - Homo Black - 5/8 SM 3/8 AN - ASA# 4241971

BORN	B.WT.	205 ADJ.	205 INDEX	A.D.G.	W.D.A.	365 ADJ.	WT. 1-4	SCROTAL
03/28/23	76	793	106	3.75	3.72	1393	1050	36.5

EPD	CE	BW	WW	YW	ADG	MCE	Milk	MWW	STAY	DOC	CW	YG	MB	BF	REA	API	TI
		15.3	-2.2	75.3	126.5	0.32	8.7	29.7	67.3	12.5	16.2	46.3	-0.05	0.3	0.022	0.8	134.5
%	20	15	50	30	20	25	15	25		15	20				35	45	45

**SIRE: GIBBS 7382E BROAD RANGE
ASA# 3404807**

**DAM: TNT F563 - HERBSTER WEST RIVER 5158 - TNT W105 - TNT DUAL FOCUS
T249 - TNT R49 - B/R NEW FRONTIER 095**

An eye-catching, deep bodied, more moderate framed Broad Range son, with an excellent disposition. He sired by a 7-way trait leader for CE, BW, YW, ADG, MCE, CW and REA, a rare combination of CE, growth and carcass and is a leading black Simmental bull in Select Sires lineup for many years running. His dam is a moderate framed, ideal uddered, beautiful cow that has been excellent, raising our top WW bull 2 years ago, going to Dan Moch, and she has maintained a 109 WW and 110 YW ratio on her first 4 calves, while having top 1% milk. Her maternal sister is another one of our favorites, just a front-end pasture type of cow.

LOT 45 L545 - Homo Polled - Hetero Black - 5/8 SM 3/8 AR - ASA# 4241976

BORN	B.WT.	205 ADJ.	205 INDEX	A.D.G.	W.D.A.	365 ADJ.	WT. 1-4	SCROTAL
03/29/23	90	873	117	4.77	4.31	1636	1210	41

EPD	CE	BW	WW	YW	ADG	MCE	Milk	MWW	STAY	DOC	CW	YG	MB	BF	REA	API	TI
		9.5	1.0	82.2	131.1	0.31	5.4	32.7	73.8	16.1	15.5	37.4	-0.34	0.15	-0.078	0.82	123.2
%			25	25	25		4	10	35	15	45	20		10	30		

**SIRE: TNT IGNITE D370
ASA# 3151499**

**DAM: TNT G722 - TNT LEGACY D345 - TNT E555 - TNT 90 PROOF Z401 - TNT
Z59 - MUSHRUSH IMPRESSIVE CA U236**

POWERHOUSE alert! A docile, thick, deep-bodied, high performance bull that was our #3 for WW, and valedictorian for ADG, WDA and YW. His sire adds pounds to his calves. He was the 5th high for WW and #1 for YW in 2016, with EPD's in the top 4% or higher for WW, YW, ADG, Milk and MWW. His dam is a broody made, very docile, ideal uddered cow, who is also the dam to TNT Dozer, the sire to Lots 101 and 105. This bulls dam, G722, is our family pet that LOVES to eat cake right out of the kid's hands! She has a 111 WW ratio and raised a set of Royalty twins last year that sold to Rod Wichmann and Ryan & Adam Bles. She was our 7th high WW heifer that has a perfect udder, going back to a beautiful, moderate framed 90 Proof daughter back to a PB Red Angus that is an excellent producing cow for us.

SALE BULLS



Lot 46



Lot 47



Lot 48



Lot 49



Lot 50



Lot 51



Lot 52



Lot 53



Lot 54



Lot 55



Lot 56



Lot 57



Lot 58



Lot 59



Lot 60

22 – View video of every bull on our website or Facebook!

www.tntsimmentals.com • Facebook/tntsimmentalranch

SALE BULLS

LOT 46 L590 - Polled Pending - Black Pending - 5/8 SM 9/32 AN 3/32 AR - ASA# 4240501

BORN	B.WT.	205 ADJ.	205 INDEX	A.D.G.	W.D.A.	365 ADJ.	WT. 1-4	SCROTAL
04/24/23	90	789	105	3.78	3.88	1394	990	40.5

EPD	CE	BW	WW	YW	ADG	MCE	Milk	MWW	STAY	DOC	CW	YG	MB	BF	REA	API	TI
	12.6	0.4	73.8	114.9	0.26	6.9	23.3	60.1	12.3	10.1	35.1	-0.15	0.25	-0.026	0.6	121.1	75.9
%	50				50	50					50						

SIRE: RFS HEADLINER H126

DAM: TNT E751 - TNT BCR UNIFIED B203 - TNT C12 - TNT FIRESTONE Y362 - TNT X12

A very attractive, medium framed, deep bodied bull, sired by RSF Headliner, a bull we purchased at Rydeen Simmentals as a high performance PB sire, that was their 2nd high WW indexing 117 and 3rd high YW at 116, out of the very popular, female making Cowboy Cut and a productive TNT Punch dam. His dam is a moderate framed, beautiful, perfect uddered Unified daughter, that goes back to a TNT Firestone daughter that has been a tremendous, top producing, extra easy keeping cow for us. Genomic EPD's and color and polled test are pending at print time and will be posted when available.

BLACK 1/2 SIMANGUS BULLS

LOT 47 L403 - Homo Polled - Homo Black - 1/2 SM 1/2 AN - ASA# 4241841

BORN	B.WT.	205 ADJ.	205 INDEX	A.D.G.	W.D.A.	365 ADJ.	WT. 1-4	SCROTAL
03/02/23	82	766	102	4.19	3.54	1437	1090	37

EPD	CE	BW	WW	YW	ADG	MCE	Milk	MWW	STAY	DOC	CW	YG	MB	BF	REA	API	TI
	12.9	-1.0	102.2	159.8	0.36	7.4	28.0	79.0	13.6	16.8	56.6	0.05	0.32	0.017	0.58	141.2	96.2
%	45	30	1	2	10	40	20	2		10	5					35	10

SIRE: MILLARS DUKE 816

DAM: TNT J114 - GIBBS 7382E BROAD RANGE - TNT F152 - NPS STATUS C186 - TNT X27 - MR NLC SUPERIOR S6018

Here is a fancy made Duke son with tons of eye appeal. Duke is a PB Angus sire we used on heifers that calved easy with great vigor and they smashed the scales at weaning time, with added length, volume, growth and maternal power, along with excellent docility. His dam was our 2nd high WW and 5th high YW heifer out of 132. Her dam is a tremendous Status daughter with a 366-day calving interval, a 108 WW and 106 YW ratio on 4 calves and is the dam to Lot 6. She is also a maternal sister to Diversify's dam, who is also the dam to Lot 15. What a powerful cow family!

LOT 48 L408 - Homo Polled - Homo Black - 1/2 SM 1/2 AN - ASA# 4241842

BORN	B.WT.	205 ADJ.	205 INDEX	A.D.G.	W.D.A.	365 ADJ.	WT. 1-4	SCROTAL
03/03/23	62	711	95	3.46	3.27	1265	1005	39

EPD	CE	BW	WW	YW	ADG	MCE	Milk	MWW	STAY	DOC	CW	YG	MB	BF	REA	API	TI
	21.0	-5.4	65.2	103.1	0.24	12.1	29.6	61.9	17.0	15.6	29.9	0.02	0.6	0.021	0.37	166.7	87.1
%	1	2				2	15	250	25	15			20			30	5

SIRE: GIBBS 7056E SOUTHERN COMFORT

DAM: TNT E135 - TNT REVENANT C217 - TNT C066 - MR NLC COMPLETE X0080 - TNT Y38 - S A V BRAND NAME 9115

A 5th generation SimAngus, sleep-at-night heifer bull who is a full brother to one of our top WW 1st calf heifers that is just beautiful, and to a full brother that sold last year to Tom Walter, all sired by the bull that does it all, from calving ease to scale topping growth, while producing top end daughters as well. Their dam is a moderate, easy keeping, beautiful TNT Revenant daughter with the perfect, ideal made udder that Revenant sires. She has an 86 BW ratio with a 104 WW and 102 YW ratio, showing her ability to calve easy and yet wean off a heavy calf as well, and her dam was our #3 WW heifer herself out of 117 and her dam, Y38, was a tremendous cow with a 107 WW and 106 YW ratio.

LOT 49 L414 - Homo Polled - Homo Black - 1/2 SM 1/2 AN - ASA# 4241847

BORN	B.WT.	205 ADJ.	205 INDEX	A.D.G.	W.D.A.	365 ADJ.	WT. 1-4	SCROTAL
03/04/23	94	842	113	3.71	3.76	1436	1150	37

EPD	CE	BW	WW	YW	ADG	MCE	Milk	MWW	STAY	DOC	CW	YG	MB	BF	REA	API	TI
	10.4	1.3	102.7	166.4	0.4	6.3	31.3	82.5	15.1	14.8	71.3	0.07	0.45	0.008	0.63	144.9	97.0
%			1	1	2		10	1	45	25	1		35			30	5

SIRE: GIBBS 7056E SOUTHERN COMFORT

DAM: TNT E189 - HERBSTER WEST RIVER 5158 - TNT C124 - JF SIGNATURE 3268A - NLC Z2058 - TNT TANKER U263

A 4th generation SimAngus, top end bull loaded with style, eye appeal, length and depth of rib, that was a standout since birth and ended as our 9th high for WW. His sire needs no introduction. We just love his calves; they come easy and grow and continue on with excellent gain. His dam, E189, is a beautiful, moderate framed, fancy made, perfect uddered cow with a 108 WW and YW ratio on her 5 bull calves with past sons selling to excellent, repeat customers Dan Moch and Scott Bradac, and his full brother was a high seller last year going to Joe Wagner. Her granddam is the dam to TNT Unified, a tremendous, top producing cow family.

LOT 50 L425 - Homo Polled - Homo Black - 1/2 SM 1/2 AN - ASA# 4241856

BORN	B.WT.	205 ADJ.	205 INDEX	A.D.G.	W.D.A.	365 ADJ.	WT. 1-4	SCROTAL
03/07/23	86	758	101	3.64	3.51	1340	1065	37.5

EPD	CE	BW	WW	YW	ADG	MCE	Milk	MWW	STAY	DOC	CW	YG	MB	BF	REA	API	TI
	11.0	-0.6	74.0	120.2	0.29	6.4	27.1	64.5	18.0	13.5	42.0	-0.15	0.15	-0.012	0.79	128.1	75.3
%		35		45	35		25	35	15	35	30				35		

SIRE: TNT DIVERSIFY H301

DAM: TNT F117 - HERBSTER WEST RIVER 5158 - TNT A49 - V D A R REALLY WINDY4097 - TNT Y2 - TNT TUITION U238

A docile, deep-bodied 5th generation SimAngus bull that is more moderate framed for a Diversify son. His sire is a powerful Broad Range son that we retained for our own use that we later sold to Alta Genetics, who is a trait leader for WW, YW and ADG, with top 3% or higher WW, YW, ADG, MWW and CW. Diversify's maternal brother is Lot 15. His dam, F117 is a moderate framed, beautiful West River daughter that has a standout S. Comfort 2nd calf heifer, and she has a 111 WW and 109 YW ratio on her first two calves.

SALE BULLS

LOT 51 L672- Homo Polled - Homo Black - 1/2 SM 1/2 AN - ASA# 4242204

BORN	B.WT.	205 ADJ.	205 INDEX	A.D.G.	W.D.A.	365 ADJ.	WT. 1-4	SCROTAL
03/07/23	80	822	112	4.07	3.81	1472	1155	37

EPD	CE	BW	WW	YW	ADG	MCE	Milk	MWW	STAY	DOC	CW	YG	MB	BF	REA	API	TI
	14.0	-0.2	88.6	144.5	0.35	6.1	30.9	75.3	15.7	14.6	56.2	-0.1	0.78	-0.019	0.76	166.9	100.0
%	35	40	15	10	10		10	5	40	25	5		10		40	10	3

SIRE: TNT COMFORT ZONE J328

**DAM: TNT J188 - GIBBS 7393E TRIBUTE - TNT E114 - CONNEALY CAPITALIST
028 - TNT C010 - MOHNEN IMPRESSIVE 1093**

Here is a bull that has been a standout since birth. His sire was our #1 WW and the 2nd high seller in the 2022 sale going to Bow & Arrow Ranch. We collected some semen and could not be happier with his calves. They are very docile, made right with standout performance. He works on heifers and his daughters should be outstanding. His semen is available. His dam, J188, was our 5th high WW and 7th YW heifer. She has top 1% milk and MWW. She comes from a tremendous cow family. Her dam has a 108 WW ratio on her calves while maintaining a 364-day calving interval.

LOT 52 L432 - Homo Polled - Homo Black - 1/2 SM 1/2 AN - ASA# 4241874

BORN	B.WT.	205 ADJ.	205 INDEX	A.D.G.	W.D.A.	365 ADJ.	WT. 1-4	SCROTAL
03/09/23	82	795	106	3.68	3.62	1384	1090	35

EPD	CE	BW	WW	YW	ADG	MCE	Milk	MWW	STAY	DOC	CW	YG	MB	BF	REA	API	TI
	11.4	0.2	100.5	164.9	0.4	5.9	28.1	79.6	9.9	16.2	63.7	0.14	0.29	0.045	0.63	128.6	93.0
%		50	2	1	2		20	2		15	2						15

SIRE: MILLARS DUKE 816

**DAM: TNT H183 - GIBBS 7382E BROAD RANGE - TNT Z124 - TNT TUITION U238
- TNT L9 - JF NEW DIMENSION 903J**

A very stylish, well made, royally bred bull sired by Duke, a sire group that we are so very happy with. He is a feature sire at S A V that boasts impeccable phenotype and performance galore and is well rounded in all traits, a 3-way trait leader, with top 1% WW, YW, ADG, MWW, DOC and CW EPD's. Dukes dam has a WW and YW index of 114 on her first 4 calves. This bulls dam is a larger framed, deep sided 2nd calver with a 104 WW and YW ratio and her dam is a L9 x Tuition ET that has had 10 calves, while maintaining a 364-day calving interval, and posting a 102 WW and YW ratio, raising many tremendous bulls and replacements along the way.

LOT 53 L443 - Homo Polled - Homo Black Dot - 1/2 SM 1/2 AN - ASA# 4241867

BORN	B.WT.	205 ADJ.	205 INDEX	A.D.G.	W.D.A.	365 ADJ.	WT. 1-4	SCROTAL
03/09/23	88	784	ET	4.52	3.84	1507	1155	38.5

EPD	CE	BW	WW	YW	ADG	MCE	Milk	MWW	STAY	DOC	CW	YG	MB	BF	REA	API	TI
	12.9	1.9	91.3	146.9	0.35	4.9	32.4	78.4	15.0	13.2	53.5	-0.14	0.39	-0.024	0.83	140.1	89.6
%	45		10	10	10		4	2	45	40	10		45		30	40	20

SIRE: CONNEALY CRAFTSMAN

**DAM: TNT E231 - WBF SIGNIFICANT B132 - TNT B4 - DCR MR MOON SHINE
X102 - TNT T149 - TNT GUNNER N208**

A soggy made, deep bodied, powerful bull that is the most moderate of the E231 x Craftsman flush and was our 11th high ADG and 18th for YW. We are very happy with the Craftsman calves, using him on three different donors and all three produced excellent calves. Craftsman is the 2022 record setting sire selling to STgenetics and Select Sires for \$500,000. He is a wide hiped, deep bodied powerhouse, with YW, ADG, Milk, MWW, CW, MB in the top 1% and WW and TI in the top 2%. His dam, E231 is a beautiful, deep bodied, broody made cow with excellent hoof and udder quality to go with. She is the dam to TNT Long Range that sold to Genetics in 2022, and her dam was a beautiful Moon Shine daughter out of a Gunner dam, bringing excellent outcross red genetics to a homo black bull.

LOT 54 L450 - Homo Polled - Homo Black - 1/2 SM 1/2 AN - ASA# 4241887

BORN	B.WT.	205 ADJ.	205 INDEX	A.D.G.	W.D.A.	365 ADJ.	WT. 1-4	SCROTAL
03/10/23	80	752	101	3.73	3.57	1349	1070	38.5

EPD	CE	BW	WW	YW	ADG	MCE	Milk	MWW	STAY	DOC	CW	YG	MB	BF	REA	API	TI
	12.9	-1.5	73.8	125.0	0.32	7.4	32.8	70.3	14.3	14.1	36.1	-0.04	0.58	0.004	0.51	148.5	87.5
%	45	25		35	20	40	3	15		30	45		20			25	25

SIRE: KS DOMINANCE J285

**DAM: TNT G180 - HERBSTER WEST RIVER 5158 - TNT A34 - MCM TOP GRADE
018X - TNT R77 - HC HUMMER 12M**

A clean fronted, fancy made bull sired by KS Dominance, the high selling black bull in Kenner Simmental 2022 sale. He is an ET son of the highly proven Sitz Stellar. His dam, G180, is a broody West River daughter with an ideal udder and a 107 WW and 102 YW ratio on her first 3 calves. Her Diversify heifer was our #3 WW out of 108 last year. Her dam is the dam to TNT Revanant, a bull that ABS bought from us, a top 1% CE sire who ranks in the top 2% for milk and Doc, a current trait leader for CE, BW, MCE, Milk, Doc and MB, whose daughters are some of the nicest udders you can find anywhere.

LOT 55 L465 - Homo Polled - Homo Black Blaze - 1/2 SM 1/2 AN - ASA# 4241896

BORN	B.WT.	205 ADJ.	205 INDEX	A.D.G.	W.D.A.	365 ADJ.	WT. 1-4	SCROTAL
03/12/23	86	851	ET	4.73	4.13	1608	1230	38.5

EPD	CE	BW	WW	YW	ADG	MCE	Milk	MWW	STAY	DOC	CW	YG	MB	BF	REA	API	TI
	14.0	1.3	94.8	152.0	0.36	5.9	32.4	80.2	12.8	13.3	65.9	-0.12	0.51	-0.014	0.99	145.6	95.2
%	35		4	4	10		4	1		40	2		30		15	30	10

SIRE: CONNEALY CRAFTSMAN

**DAM: TNT E231 - WBF SIGNIFICANT B132 - TNT B4 - DCR MR MOON SHINE
X102 - TNT T149 - TNT GUNNER N208**

Here is a STUD ET out of Craftsman and E231, a performance powerhouse with massive volume, muscle, thickness and extra dimension who was a top WW and finished as our #2 YW, #3 ADG and #6 WDA. His sire is a wide hiped, deep bodied powerhouse, with YW, ADG, Milk, MWW, CW, MB in the top 1% and WW and TI in the top 2%, a trait leader for WW and MB. We are the only Simmental breeders to have calves out of Craftsman this season, purchasing one of their 20 packages they sold before sales opened up that fall, and I am glad we did! His dam is a striking blaze faced Significant daughter, that goes back to red genetics of the popular Moon Shine and Gunner on the dams side. She is also the dam to TNT Long Range, the sire to some very good calves in the sale.

SALE BULLS

LOT 56 L469 - Homo Polled - Homo Black - 1/2 SM 1/2 AN - ASA# 4241909

BORN	B.WT.	205 ADJ.	205 INDEX	A.D.G.	W.D.A.	365 ADJ.	WT. 1-4	SCROTAL
03/13/23	76	754	101	4.04	3.47	1401	1030	33.5

EPD	CE	BW	WW	YW	ADG	MCE	Milk	MWW	STAY	DOC	CW	YG	MB	BF	REA	API	TI
	15.2	-2.2	85.5	129.4	0.27	7.8	28.7	71.4	18.4	15.8	41.3	-0.16	0.44	-0.005	0.89	155.8	91.5
%	25	15	20	25	45	35	15	15	15	15	30		40		20	15	15

SIRE: TNT COMFORT ZONE J328

DAM: TNT J232 - GIBBS 7393E TRIBUTE - TNT E188 - HSR LEAD OFF C705 - NLC Z2058 - TNT TANKER U263

A bull that is thick, deep and real balanced in his phenotype, while exhibiting the docility that his sire brings to his progeny. Comfort Zone was our #1 WW bull in 2022 that was a real standout with flawless phenotype, with 12 EPD's in the top 25% or higher. His dam is a moderate framed, broody made, perfect uddered 1st calf heifer that is one of our absolute favorites, a maternal sister to the dam of Lot 5. Their dam is one of our best, she is just stunning and has a 108 WW and 109 YW ratio on her calves, with last years standout selling to Crosshair Simmentals. Her dam is the dam to TNT Unified and she is also the great-granddam to Lot 49.

LOT 57 L480 - Homo Polled - Homo Black Blaze - 1/2 SM 1/2 AN - ASA# 4241912

BORN	B.WT.	205 ADJ.	205 INDEX	A.D.G.	W.D.A.	365 ADJ.	WT. 1-4	SCROTAL
03/14/23	90	786	ET	3.97	3.73	1421	1105	39.5

EPD	CE	BW	WW	YW	ADG	MCE	Milk	MWW	STAY	DOC	CW	YG	MB	BF	REA	API	TI
	13.8	1.1	82.9	137.3	0.34	5.7	32.4	74.2	17.2	15.9	63.3	-0.07	0.62	-0.012	0.82	156.5	91.1
%	35		25	15	10		4	10	25	15	2		15		30	15	15

SIRE: CONNEALY CRAFTSMAN

DAM: TNT E231 - WBF SIGNIFICANT B132 - TNT B4 - DCR MR MOON SHINE X102 - TNT T149 - TNT GUNNER N208

A flush mate out of E231 and Craftsman that is long bodied, with extra muscle expression and a beautiful front end. His sire is a wide hiped, deep bodied powerhouse, with YW, ADG, Milk, MWW, CW and MB in the top 1% and WW and TI in the top 2%, a trait leader for WW and MB. We are the only Simmental breeders to have calves out of Craftsman this season, purchasing one of their 20 packages they sold before sales opened up that fall. His dam is a beautiful broody made, sound footed, neat uddered daughter of WBF Significant, a huge growth sire that is a trait leader for YW, ADG, DOC and CW, which we owned with Accelerated Genetics. She is also the dam to TNT Long Range that STgenetics purchased in 2022.

LOT 58 L496 - Homo Polled - Homo Black Blaze - 1/2 SM 1/2 AN - ASA# 4241931

BORN	B.WT.	205 ADJ.	205 INDEX	A.D.G.	W.D.A.	365 ADJ.	WT. 1-4	SCROTAL
03/16/23	98	857	ET	4.18	4.00	1526	1175	39

EPD	CE	BW	WW	YW	ADG	MCE	Milk	MWW	STAY	DOC	CW	YG	MB	BF	REA	API	TI
	12.8	1.1	92.3	147.2	0.34	5.1	32.4	78.9	14.0	14.0	64.2	-0.07	0.4	-0.024	0.86	139.6	90.9
%	50		10	10	10		4	2		30	2		45		25	40	15

SIRE: CONNEALY CRAFTSMAN

DAM: TNT E231 - WBF SIGNIFICANT B132 - TNT B4 - DCR MR MOON SHINE X102 - TNT T149 - TNT GUNNER N208

A Craftsman ET STUD that has been a standout all summer long, an extremely high performance bull since birth and was a top for WDA and YW. He is a very thick topped, extra deep bodied bull with extra neck extension. We were the only Simmental breeder to purchase a package of semen on Craftsman, making these the only SimAngus Craftsman calves to be offered this sale season. Craftsman was the \$500,000 bull selling to STgenetics and Select Sires. He is a wide hiped, deep bodied powerhouse, with 8 EPD's in the top 2% or higher. His dam is a beautiful black blaze faced cow, the dam to TNT Long Range, who is also the sire to calves in the sale. His is flush brothers are Lots 53, 55, 57 and 60. He did get worked up when we clipped him. We can scratch on him in the big pen, but we would use caution when working with him alone.

LOT 59 L497 - Homo Polled - Homo Black - 1/2 SM 1/2 AN - ASA# 4241934

BORN	B.WT.	205 ADJ.	205 INDEX	A.D.G.	W.D.A.	365 ADJ.	WT. 1-4	SCROTAL
03/16/23	88	796	106	3.36	3.54	1334	1040	37.5

EPD	CE	BW	WW	YW	ADG	MCE	Milk	MWW	STAY	DOC	CW	YG	MB	BF	REA	API	TI
	12.2	-0.3	90.0	137.1	0.29	6.8	24.0	68.9	20.3	9.7	33.6	0.03	0.46	0.018	0.38	154.3	90.7
%		40	10	15	35	50	50	20	4				35			20	15

SIRE: GIBBS 7056E SOUTHERN COMFORT

DAM: TNT F556 - TNT BCR UNIFIED B203 - TNT Z22 - TNT TUITION U238 - TNT S177 - B/R NEW FRONTIER 095

A 4th generation SimAngus, phenotype standout that is thick, deep who possesses the docile disposition of his sire. He is an extreme CE sire that still adds growth, and is a current trait leader for WW, YW and ADG, with top 1% YW, 2% WW, ADG, DOC and 3% TI. The S. Comfort daughters are tremendous with excellent udder quality. His dam is a moderate framed Unified daughter with the ideal udder quality that we expect from the Unified daughters. She has a 368-day calving interval on her first 4 calves with a 104 WW ratio and has a beautiful, extra broody Convergence daughter in the bred heifer pen. A bull that does so many things right, performance stacked with maternal. His daughters will be excellent.

LOT 60 L500 - Homo Polled - Homo Black - 1/2 SM 1/2 AN - ASA# 4241932

BORN	B.WT.	205 ADJ.	205 INDEX	A.D.G.	W.D.A.	365 ADJ.	WT. 1-4	SCROTAL
03/16/23	82	741	ET	4.22	3.50	1416	1030	39

EPD	CE	BW	WW	YW	ADG	MCE	Milk	MWW	STAY	DOC	CW	YG	MB	BF	REA	API	TI
	14.6	-0.8	82.0	129.8	0.3	6.3	32.4	73.8	12.9	18.0	50.3	-0.13	0.61	-0.017	0.81	150.5	92.5
%	30	30	30	25	30		4	10		4	15		20		30	25	15

SIRE: CONNEALY CRAFTSMAN

DAM: TNT E231 - WBF SIGNIFICANT B132 - TNT B4 - DCR MR MOON SHINE X102 - TNT T149 - TNT GUNNER N208

Here is a very stylish, deep bodied, smooth fronted Craftsman ET that is the most calving ease of the flush. We are very glad we bought one of the first 20 packages sold on Craftsman. We flushed three cows to him and all produced tremendous matings, we were just heifer strong on the other two. Craftsman is a wide hiped, deep bodied powerhouse, with YW, ADG, Milk, MWW, CW, MB in the top 1% and WW and TI in the top 2%, a trait leader for WW and MB. The dam to this flush is a deep, broody made, neat uddered Significant daughter that goes back to red pedigrees like Moon Shine and Gunner, some of the greats.

SALE BULLS



Lot 61



Lot 62



Lot 63



Lot 64



Lot 65



Lot 66



Lot 67



Lot 68



Lot 69



Lot 70



Lot 71



Lot 72



Lot 73



Lot 74



Lot 75

SALE BULLS

LOT 61 L719 - Homo Polled - Homo Black - 1/2 SM 1/2 AN - ASA# 4242086

BORN	B.WT.	205 ADJ.	205 INDEX	A.D.G.	W.D.A.	365 ADJ.	WT. 1-4	SCROTAL
03/18/23	88	880	120	4.53	4.28	1605	1250	37

EPD	CE	BW	WW	YW	ADG	MCE	Milk	MWW	STAY	DOC	CW	YG	MB	BF	REA	API	TI
	13.0	0.5	89.7	142.3	0.33	5.8	29.3	74.1	12.4	13.0	53.0	-0.16	0.63	-0.049	0.67	149.8	95.9
%	45		10	10	15		15	10		45	10		15	45		25	10

SIRE: BAR CK AVENGER 9023G

DAM: TNT G118 - TNT BCR UNIFIED B203 - TNT E114 - CONNEALY CAPITALIST 028 - TNT C010 - MOHNEN IMPRESSIVE 1093

A 5th generation SimAngus that was our #1 WW and has been a standout all along and continued as our #2 WDA, #4 YW and #9 ADG. This is a very consistent mating; his full brother was a standout last year that was our 5th high WW and #1 YW and he was made just like him. He sold to long-time customer Dan Moch. His sire has been a sleep-at-night heifer bull with excellent growth and ranks in the top 1% for MB, Shear Force and TI. This bulls dam has been exceptional, along with her granddam and her 1st daughter just calved this spring and her calf ratioed 108 and she is Aled for an early calf. This bull ties it all together.

BLACK 3/8 SIMANGUS BULLS

LOT 62 L661 - Homo Polled - Homo Black - 3/8 SM 5/8 AN - ASA# 4242207

BORN	B.WT.	205 ADJ.	205 INDEX	A.D.G.	W.D.A.	365 ADJ.	WT. 1-4	SCROTAL
03/04/23	84	766	104	4.36	3.64	1464	1115	33.5

EPD	CE	BW	WW	YW	ADG	MCE	Milk	MWW	STAY	DOC	CW	YG	MB	BF	REA	API	TI
	11.5	1.5	99.8	169.5	0.44	3.1	28.4	79.5	11.2	16.6	77.2	0.1	0.58	0.009	0.65	141.6	97.2
%			2	1	1		20	2		10	1		20			35	5

SIRE: MILLARS DUKE 816

DAM: TNT J192 - GIBBS 7393E TRIBUTE - TNT F188 - S D S NIGHTRIDE 611D - TNT C087 - JF SIGNATURE 3268A

Here is an extremely thick, moderate framed, very docile bull that is in the top end for gain. His sire is the up and coming Beef-360 sire featured at the Schaff Angus Valley herd. He worked great for us on heifers and improved disposition and added growth without adding frame, and is well rounded in all traits, from a tremendous cow with a 114 WW ratio on her first 4 calves. This bulls dam is a very docile, ideal uddered, broody made 1st calf heifer. She goes back to Z10, who is the dam to TNT Convergence. Here is a bull that is sure to add pounds and superior replacements.

LOT 63 L671 - Homo Polled - Homo Black - 3/8 SM 5/8 AN - ASA# 4242197

BORN	B.WT.	205 ADJ.	205 INDEX	A.D.G.	W.D.A.	365 ADJ.	WT. 1-4	SCROTAL
03/06/23	72	815	111	4.34	3.83	1509	1165	35.5

EPD	CE	BW	WW	YW	ADG	MCE	Milk	MWW	STAY	DOC	CW	YG	MB	BF	REA	API	TI
	16.1	-4.3	99.7	155.0	0.35	9.3	26.3	76.1	7.2	18.0	62.4	0.17	0.3	0.054	0.56	131.2	96.1
%	15	4	2	3	10	15	30	4		4	2						10

SIRE: MILLARS DUKE 816

DAM: TNT J174 - GIBBS 7382E BROAD RANGE - TNT E120 - TNT BCR UNIFIED B203 - TNT B6 - S A V ANGUS VALLEY 1867

Here is a light BW, high WW, thick-made bull with extra muscle expression, a high performer for YW. His sire has worked excellently for us. He is a heifer bull that adds growth and is very docile, an up and coming bull for Beef 360. His dam is out of Broad Range, a highly proven PB Simmental sire who is a CE, BW, WW, YW, ADG, MCE, CW and REA trait leader. The cow family goes back to our R77 donor cow. This is a bull that should work great on heifers, while combining huge growth numbers and has high maternal stacked in his pedigree.

LOT 64 L673 - Homo Polled - Homo Black - 3/8 SM 5/8 AN - ASA# 4242213

BORN	B.WT.	205 ADJ.	205 INDEX	A.D.G.	W.D.A.	365 ADJ.	WT. 1-4	SCROTAL
03/07/23	96	849	116	4.38	3.93	1550	1190	38

EPD	CE	BW	WW	YW	ADG	MCE	Milk	MWW	STAY	DOC	CW	YG	MB	BF	REA	API	TI
	8.3	1.6	98.5	163.9	0.41	5.6	30.1	80.5	10.0	16.6	54.3	0.04	0.39	0.002	0.49	123.7	91.3
%			2	1	1		10	1		10	10		45				15

SIRE: MILLARS DUKE 816

DAM: TNT J197 - GIBBS 8404F INNOVATOR - TNT F178 - NPS STATUS C186 - TNT C013 - JF SIGNATURE 3268A

Here is an extremely thick, stylish-made, high performance bull. He is our 5th high WW bull a top for gain and 8th high for YW. His sire is a very consistent sire whose calves are very docile, and he crossed tremendously with Simmental. He ranks in the top 1% for WW, YW, ADG, MWW, and CW...wow! His 1st calf heifers dam is a picture-perfect young cow and is bred early for next year. This is a bull that is sure to add pounds, eye appeal and sire superior replacements.

LOT 65 L454 - Homo Polled - Homo Black - 3/8 SM 5/8 AN - ASA# 4241893

BORN	B.WT.	205 ADJ.	205 INDEX	A.D.G.	W.D.A.	365 ADJ.	WT. 1-4	SCROTAL
03/11/23	80	749	100	3.91	3.41	1374	1020	35.5

EPD	CE	BW	WW	YW	ADG	MCE	Milk	MWW	STAY	DOC	CW	YG	MB	BF	REA	API	TI
	11.3	1.3	102.1	160.1	0.36	8.1	27.5	79.8	12.2	19.0	61.9	0.07	0.31	0.022	0.63	127.7	91.3
%			1	2	10	30	25	2		3	3						15

SIRE: MILLARS DUKE 816

DAM: TNT J177 - GIBBS 8360F BLUEPRINT - TNT D148 - TNT TANKER U263 - TNT A11 - A A R TEN X 7008 S A

A 5th generation SimAngus who is a thick made, deep bodied, moderate framed Duke son. They are just so similar, one after another. That is what we love to see with our sire groups. Duke was purchased as a 3 yr. old by S A V Angus after they saw him on a SD ranch tour, a bull that calves easy and smashes the scales at weaning, while siring excellent udder quality on his heifers as well. He is a 3-way trait leader, with top 1% WW, YW, ADG, MWW, DOC and CW EPD's. His dam is a deep, broody, moderate framed 1st calf heifer out of an exceptional Tanker daughter, with a 105 WW and 106 YW ratio, and her dam was an excellent Ten X daughter as well. Lots of longevity and performance bred into this mating.

SALE BULLS

LOT 66 L684 - Homo Polled - Homo Black - 3/8 SM 5/8 AN - ASA# 4242219

BORN	B.WT.	205 ADJ.	205 INDEX	A.D.G.	W.D.A.	365 ADJ.	WT. 1-4	SCROTAL
03/11/23	88	811	110	3.74	3.65	1410	1090	35.5

EPD	CE	BW	WW	YW	ADG	MCE	Milk	MWW	STAY	DOC	CW	YG	MB	BF	REA	API	TI
	12.5	0.0	91.3	148.9	0.36	7.1	28.6	75.4	9.0	12.3	48.1	-0.03	0.46	-0.002	0.59	130.4	91.1
%		45	10	5	10	45	15	5		50	15		35				15

SIRE: MILLARS DUKE 816

DAM: TNT J209 - GIBBS 7393E TRIBUTE - TNT E281 - TNT BOOTLEGGER Z268 - TNT R77 - HC HUMMER 12M

A bull that is very complete in his makeup, who has extra length & depth with a flawless phenotype. His sire, Millars Duke, is one of the most consistent Angus sires we have used on Simmental and SimAngus. He is an extremely high growth sire that has worked great on heifers for us. His dam, J209, is a very deep bodied, docile, ideal uddered 1st calf heifer, whose sire is a very high maternal sire whose daughters are very broody made with excellent udder quality. Her dam is an ET daughter of the great TNT Bootlegger and our R77 donor. This is a bull that is bred to add pounds, phenotype and have superior daughters.

LOT 67 L689 - Homo Polled - Homo Black - 3/8 SM 5/8 AN - ASA# 4242220

BORN	B.WT.	205 ADJ.	205 INDEX	A.D.G.	W.D.A.	365 ADJ.	WT. 1-4	SCROTAL
03/11/23	76	776	106	3.31	3.44	1306	1030	40

EPD	CE	BW	WW	YW	ADG	MCE	Milk	MWW	STAY	DOC	CW	YG	MB	BF	REA	API	TI
	12.7	-2.7	84.7	136.0	0.32	8.4	30.8	74.3	10.2	12.2	42.8	-0.01	0.44	0.02	0.62	133.7	89.9
%		50	10	20	20	25	10	10			25		40			50	20

SIRE: MILLARS DUKE 816

DAM: TNT J212 - GIBBS 8404F INNOVATOR - TNT F128 - RYMO EXTRA UP U60D - TNT A28 - S A V THUNDERBIRD 9061

Here is a very attractive, well made, very docile, 5th generation SimAngus son of Duke, an up and coming Angus sire for Beef 360 owned by S A V that has crossed so well on our heifers. He adds performance without extra frame, a very uniform, consistent sire for us. His dam, J212, has a picture-perfect udder and her sire was the 2nd high WW ratioing 119 and 2nd high YW ratioing 115. His dam has a WW ratio of 117 on 6 calves and a 365-day calving interval. He is stacked with growth and very strong maternal traits.

LOT 68 L696 - Homo Polled - Homo Black - 3/8 SM 5/8 AN - ASA# 4242212

BORN	B.WT.	205 ADJ.	205 INDEX	A.D.G.	W.D.A.	365 ADJ.	WT. 1-4	SCROTAL
03/12/23	88	778	106	4.12	3.66	1437	1090	38

EPD	CE	BW	WW	YW	ADG	MCE	Milk	MWW	STAY	DOC	CW	YG	MB	BF	REA	API	TI
	11.5	-0.2	100.1	159.7	0.37	5.9	25.6	76.8	11.9	14.2	57.9	0.1	0.29	0.027	0.53	128.1	91.1
%		40	2	2	4		40	3		30	4						15

SIRE: MILLARS DUKE 816

DAM: TNT J196 - TNT BCR UNIFIED B203 - TNT G185 - S D S NIGHTRIDE 611D - TNT E198 - CCR WIDE RANGE 9005A

Here is an extremely thick, powerful made phenotype standout. His sire, Duke, has crossed so well on our heifers. It is a very consistent sire group; they are extremely thick with extra muscle shape and volume. He ranks in the top 1% for WW, YW, ADG, MWW and CW. His dam, J196, is a very fancy made, big middled daughter of TNT Unified. She ratioed 108 for WW ratio of 106 and YW ratio of 108 on her calves, with a 366-day calving interval. Here is a bull that will add pay weight, added style and top replacements.

LOT 69 L481 - Homo Polled - Homo Black - 3/8 SM 5/8 AN - ASA# 4241921

BORN	B.WT.	205 ADJ.	205 INDEX	A.D.G.	W.D.A.	365 ADJ.	WT. 1-4	SCROTAL
03/14/23	94	802	107	4.32	3.85	1494	1140	39

EPD	CE	BW	WW	YW	ADG	MCE	Milk	MWW	STAY	DOC	CW	YG	MB	BF	REA	API	TI
	12.6	-0.5	83.3	140.5	0.36	5.0	33.8	76.5	15.7	14.2	50.3	-0.04	0.41	0.001	0.65	139.8	86.5
%		50	35	25	15	10		2	4	40	30	15		40		40	30

**SIRE: TEHAMA TAHOE B767
ASA# 3396482**

DAM: TNT G159 - RYMO EXTRA UP U60D - TNT D116 - TNT TUITION U238 - TNT W20 - TNT DUAL FOCUS T249

A medium framed, deep bodied, very attractive 5th generation SimAngus that is sired by Tahoe, arguably one of the most complete Angus bulls in the breed, with an excellent combo of CE, performance, maternal and carcass, as trait leader for WW, YW, ADG, Milk, MWW, CW and MB. His dam is a broody, perfect uddered 3rd calver out of Extra Up, who ranks in the top 4% or higher for YW, ADG, Milk and MWW. She has a 110 WW and 111 YW ratio and a 365-day calving interval, with her excellent S. Comfort son selling to Miller Brothers last year.

LOT 70 L406 - Homo Polled - Homo Black - 1/4 SM 3/4 AN - ASA# 4241840

BORN	B.WT.	205 ADJ.	205 INDEX	A.D.G.	W.D.A.	365 ADJ.	WT. 1-4	SCROTAL
03/02/23	74	805	108	4.38	3.80	1506	1170	39

EPD	CE	BW	WW	YW	ADG	MCE	Milk	MWW	STAY	DOC	CW	YG	MB	BF	REA	API	TI
	16.2	-3.2	96.9	150.8	0.34	9.4	35.6	85.3	13.1	17.1	56.5	0.19	0.35	0.048	0.4	142.6	95.2
%		15	10	3	4	10	15	1	1	10	5		50			35	10

SIRE: MILLARS DUKE 816

DAM: TNT G172 - HERBSTER WEST RIVER 5158 - NLC 2071Z - TNT TANKER U263 - NLC U8737 - MR NLC OLIE R5211

Here is a major league herdsire prospect with outcross calving-ease mixed with top performance, superior phenotype and cow power beyond compare a top for ADG and YW. His sire is a 3-way trait leader, with top 1% WW, YW, ADG, MWW, DOC and CW EPD's. He boasts impeccable phenotype and performance galore. His dam, G172 is a tremendous, perfect uddered cow with a 112 WW and 113 YW ratio on her first 3 calves, and her full sister has a 115 WW and 114 YW ratio on her 4 calves. Their dam is one of the top producing cows on our place, the dam to the powerhouse TNT Assurance who has 13 sons in the sale! She indexed 126 for WW and 121 for YW herself and has a 107 WW and 110 YW on her 10 calves, and her dam is the same way. This is an exceptional calf that is royally bred with CE and growth.

SALE BULLS

LOT 71 L681 - Homo Polled - Homo Black - 1/4 SM 3/4 AN - ASA# 4242205

BORN	B.WT.	205 ADJ.	205 INDEX	A.D.G.	W.D.A.	365 ADJ.	WT. 1-4	SCROTAL
03/10/23	90	783	107	3.77	3.62	1386	1085	38.5

EPD	CE	BW	WW	YW	ADG	MCE	Milk	MWW	STAY	DOC	CW	YG	MB	BF	REA	API	TI
	8.2	2.0	100.4	162.3	0.39	6.2	25.4	76.8	8.2	11.7	68.3	0.09	0.43	0.024	0.66	121.2	91.9
%			2	1	2		40	3			1		40				15

SIRE: MILLARS DUKE 816

**DAM: TNT J190 - GIBBS 8404F INNOVATOR - TNT D126 - CCR WIDE RANGE
9005A - TNT A12 - A A R TEN X 7008 S A**

Here is a deep bodied, very docile, high-performance bull. His sire really stamps his calves with his depth and thickness, a bull that comes from an excellent dam with a 114 WW ratio on her 4 calves. He ranked in the top 1% for WW, YW, ADG, MWW, & CW and passes his docility to his offspring as well. L681's dam is a daughter of Gibbs Innovator, who was their 2nd high WW ratioing 119 and 2nd high YW ratioing 115. His dam is the daughter of Dual Focus, who has a WW ratio of 117 on 6 calves. His granddam was our 2nd high WW heifer out of 132 ratioing 115. Here is a bull stacked with performance and high maternal.

RED PUREBRED SIMMENTAL BULLS

LOT 72 L427 - Homo Polled - Red - PB Simmental - ASA# 4241861

BORN	B.WT.	205 ADJ.	205 INDEX	A.D.G.	W.D.A.	365 ADJ.	WT. 1-4	SCROTAL
03/08/23	78	828	111	4.62	4.09	1567	1235	40

EPD	CE	BW	WW	YW	ADG	MCE	Milk	MWW	STAY	DOC	CW	YG	MB	BF	REA	API	TI
	18.5	-2.0	88.7	132.0	0.27	10.9	30.0	74.2	14.4	15.8	29.8	-0.38	0.23	-0.081	0.82	153.6	93.8
%	2	10	15	20	35	2	10	10		10	50		40	30		20	10

SIRE: ROCKIN H CAPTIVATE J75

**DAM: DSR 957G - HOOK'S DELEGATE 64D - DSR 468 - TNTS HOMERUN X298 -
DSR Z255 - GCF MR AMIGO**

A high-performance STUD that is thick, deep and very docile, that was one of our top WW bulls. This scale-topper is phenotypically and genetically outstanding with major breed impact potential. He has been one to catch our eye since birth, sired by the popular Captivate, a bull that we really tried hard to purchase! He has turned out that he is more of a heifer bull, and this calf should fit that bill as well. This bull's dam is a dark red, ideal uddered Delegate daughter that we purchased from DSR as a bred heifer and she is doing a great job for us, with a 108 WW on her first 3 calves. Her calf last year was a standout as well, selling to long-time customer Jeff McCloud.

LOT 73 L438 - Homo Polled - Red - PB Simmental - ASA# 4241878

BORN	B.WT.	205 ADJ.	205 INDEX	A.D.G.	W.D.A.	365 ADJ.	WT. 1-4	SCROTAL
03/09/23	74	738	ET	4.11	3.41	1396	1025	37.5

EPD	CE	BW	WW	YW	ADG	MCE	Milk	MWW	STAY	DOC	CW	YG	MB	BF	REA	API	TI
	16.8	-0.4	91.0	133.8	0.27	8.4	30.2	75.6	16.7	19.0	28.2	-0.37	0.05	-0.056	0.97	143.7	88.4
%	4	20	10	20	35	15	10	4	40	2					30	30	20

SIRE: ROCKIN H CAPTIVATE J75

**DAM: TNT F163 - CDI PERSPECTIVE 238A - TNT D246 - TNT 90 PROOF Z401 -
TNT U170 - TNT GUNNER N208**

A docile Captivate embryo that has lots of style and eye appeal to go with this CE and growth. His sire has turned out to be a real calving ease bull, but the calves really turn it on and grow out nice, which matches his EPD's as a trait leader for CE, WW and YW. His dam, F163 is a picture-perfect, broody-made, dark cherry red cow with a 107 WW and 105 YW ratio. She is the dam to TNT Regal, and his full sister is one of our best 1st calf heifers this year. F163's natural calf is a tremendous full brother to this calf, selling as Lot 80.

LOT 74 L452 - Homo Polled - Red - PB Simmental - ASA# 4241886

BORN	B.WT.	205 ADJ.	205 INDEX	A.D.G.	W.D.A.	365 ADJ.	WT. 1-4	SCROTAL
03/10/23	92	733	98	3.79	3.45	1339	1035	39.5

EPD	CE	BW	WW	YW	ADG	MCE	Milk	MWW	STAY	DOC	CW	YG	MB	BF	REA	API	TI
	6.7	-0.2	81.7	120.8	0.24	2.5	30.5	71.2	16.9	13.3	29.6	-0.3	0.42	-0.057	0.76	147.3	90.2
%		25	35	40			10	15	35	30	50		15			25	20

SIRE: GW HILGER ONE 454H

**DAM: TNT E126 - WS PRIME TIME B6 - TNT B41 - DCR MR MOON SHINE X102 -
TNT W109 - TNTS BIG LEAGUE R242**

A docile, smooth made, long bodied bull with a little more frame. His sire is a Select Sires outcross sire that is a trait leader for WW, YW and DOC, that also worked well on heifer and has high maternal and carcass traits. His dam has been exceptional with a 107 WW and 109 YW ratio on her calves. She is the dam to TNT Royalty and his full brother, TNT Dignify, was our high selling red bull in 2022 purchased by Kunkel Simmental, and her dam raised our high seller in 2019, TNT Defender. This is a high growth, maternally packed bull with 5 generations of outstanding, very productive cows backing him.

LOT 75 L456 - Homo Polled - Red Baldy - PB Simmental - ASA# 4241894

BORN	B.WT.	205 ADJ.	205 INDEX	A.D.G.	W.D.A.	365 ADJ.	WT. 1-4	SCROTAL
03/11/23	76	746	100	3.79	3.34	1352	1000	38.5

EPD	CE	BW	WW	YW	ADG	MCE	Milk	MWW	STAY	DOC	CW	YG	MB	BF	REA	API	TI
	17.6	-0.9	75.1	116.7	0.26	9.0	24.9	62.3	16.7	14.0	28.0	-0.46	0.27	-0.098	0.9	153.6	85.5
%	3	15		50	40	10	35	45	40	25		20	30	15	45	20	30

SIRE: DSR INVINCIBLE 81H

**DAM: TNT J710 - CDI PERSPECTIVE 238A - TNT G715 - IR IMPERIAL D948 - TNT
D248 - TNT 90 PROOF Z401**

A docile blaze-faced, calving ease heifer bull with the extra muscle expression and length his sire injects into his calves. We were looking for a PB red blazed face bull that would work on heifers and we found him at Deckert Simmentals 2021 sale. He has been excellent to calve on heifers and adds that growth that his sire Bulletproof puts into his calves. His dam is a moderate framed, deep bodied, beautiful uddered 1st calf heifer, out of an ideal uddered, broody Imperial daughter, back to an ET daughter of R77 and the cow maker sire, 90 Proof.

SALE BULLS



Lot 76



Lot 77



Lot 78



Lot 79



Lot 80



Lot 81



Lot 82



Lot 83



Lot 84



Lot 85



Lot 86



Lot 87



Lot 88



Lot 89



Lot 90

30 – View video of every bull on our website or Facebook!

www.tntsimmentals.com • Facebook/tntsimmentalranch

SALE BULLS

LOT 76 L483 - Homo Polled - Red - PB Simmental - ASA# 4241911

BORN	B.WT.	205 ADJ.	205 INDEX	A.D.G.	W.D.A.	365 ADJ.	WT. 1-4	SCROTAL									
03/14/23	88	792	ET	4.06	3.77	1442	1115	39									
EPD	CE	BW	WW	YW	ADG	MCE	Milk	MWW	STAY	DOC	CW	YG	MB	BF	REA	API	TI
	13.1	0.3	89.8	130.7	0.26	6.7	28.1	72.9	17.4	18.6	36.0	-0.51	0.26	-0.08	1.31	151.1	92.2
%	30	30	15	20	40	35	15	10	30	2	30	10	35	50	2	20	15

SIRE: ROCKIN H CAPTIVATE J75

DAM: TNT G143 - IR IMPERIAL D948 - TNT E275 - TNT 90 PROOF Z401 - TNT W70 - TNT GUNNER N208

A very docile, thick, deep sided dark red ET that puts it all together in a high growth, maternally packed package. His sire brings new pedigree to the red side, with the popular Cowboy Cut on his dam side and Lover Boy on the top side. He is already a 3-way trait leader for CE, WW and YW. His dam, G143, is a beautiful cow with an ideal udder, and she had an excellent Bulletproof son sell to Jeff McCloud and a Merlin son go to Chris Bang, and her full sister raised our 4th high WW heifer this spring, also out of Captivate. Their W70 x 90 Proof ET dam has been a top-notch cow, with a 108 WW on her calves.

LOT 77 L489 - Homo Polled - Red - PB Simmental - ASA# 4241915

BORN	B.WT.	205 ADJ.	205 INDEX	A.D.G.	W.D.A.	365 ADJ.	WT. 1-4	SCROTAL									
03/14/23	92	756	101	3.98	3.60	1393	1065	37									
EPD	CE	BW	WW	YW	ADG	MCE	Milk	MWW	STAY	DOC	CW	YG	MB	BF	REA	API	TI
	12.0	2.0	91.4	140.6	0.31	6.8	30.7	76.3	13.9	18.6	32.4	-0.43	0.0	-0.089	0.94	126.7	84.8
%	40	40	10	10	15	35	10	4	2	40	35	30	40	30	40	30	30

SIRE: ROCKIN H CAPTIVATE J75

DAM: TNT D264 - TNT BOOTLEGGER Z268 - TNT S17 - TNT FIVE STAR P275 - TNT L9 - JF NEW DIMENSION 903J

A heavy muscled, extremely stylish, deep bodied bull sired by Captivate, the outcross red bull that excels in CE and growth with high maternal traits, a trait leader for CE, YW and WW. His dam is a broody dam ET daughter of TNT Bootlegger and our S17 donor cow. She has a 363-day calving interval and a 105 WW and 108 YW ratio, with past sons selling to repeat customers Tyler Bolme and Gerald Havelka. His maternal sister is a long bodied, dark red, ideal uddered dam to Lot 99, a very high performance, excellent son of Hilger One.

LOT 78 L490 - Homo Polled - Red - PB Simmental - ASA# 4241919

BORN	B.WT.	205 ADJ.	205 INDEX	A.D.G.	W.D.A.	365 ADJ.	WT. 1-4	SCROTAL									
03/14/23	98	795	106	3.74	3.68	1394	1090	37									
EPD	CE	BW	WW	YW	ADG	MCE	Milk	MWW	STAY	DOC	CW	YG	MB	BF	REA	API	TI
	6.4	5.3	85.1	135.4	0.31	3.2	31.4	73.9	8.7	14.3	58.5	-0.42	0.15	-0.087	1.25	109.4	79.9
%			25	15	15		4	10		20	2	40		30	3		50

SIRE: TNT ROYALTY H335

DAM: TNT G106 - TNT TANNERITE B369 - TNT C090 - TNT BULLET PROOF X240 - TNT X43 - TNTS BIG LEAGUE R242

A darker red, long-sided bull with excellent phenotype, sired by our herdsire that was the high selling bull in 2021. Royalty is an extremely long bodied sire with extra stature, out of strong producing Prime Time daughter that has a 107 WW and 109 YW ratio on her 5 calves, with top 1% milk. His dam, G106, is a broody, deep bodied daughter of the maternal great, Tannerite, with top 1% milk. Her Merlin daughter is the dam to Lot 102, one of Dads top WW bulls, and her maternal sister is the granddam to Lot 110.

LOT 79 L502 - Homo Polled - Red - PB Simmental - ASA# 4241929

BORN	B.WT.	205 ADJ.	205 INDEX	A.D.G.	W.D.A.	365 ADJ.	WT. 1-4	SCROTAL									
03/16/23	64	713	TW	3.96	3.39	1346	996	36.5									
EPD	CE	BW	WW	YW	ADG	MCE	Milk	MWW	STAY	DOC	CW	YG	MB	BF	REA	API	TI
	17.1	-2.5	71.8	117.2	0.28	10.1	22.8	58.5	14.8	16.8	28.4	-0.4	0.55	-0.069	0.95	166.6	92.2
%	4	4		45	25	4				10		50	10		35	10	15

SIRE: DSR INVINCIBLE 81H

DAM: TNT H231 - IR IMPERIAL D948 - TNT E235 - TNT TANNERITE B369 - TNT Y62 - TNTS BIG LEAGUE R242

A smooth made twin bull with flawless phenotype, so stylish and deep bodied, that should work well on heifers. His sire is an extremely easy calving Bulletproof son who still is in the top 20% for YW and 10% for ADG, along with high maternal and carcass traits. Invincibles dam is now a donor for Deckerts, and has a 107 WW and 107 YW ratio on her 9 calves. His dam, H231 is a deep, broody made 2nd calver with the ideal udder quality we see from the Imperial daughters, back to a broody Tannerite daughter.

LOT 80 L505 - Homo Polled - Red - PB Simmental - ASA# 4241938

BORN	B.WT.	205 ADJ.	205 INDEX	A.D.G.	W.D.A.	365 ADJ.	WT. 1-4	SCROTAL									
03/17/23	88	825	110	4.05	3.86	1474	1130	40									
EPD	CE	BW	WW	YW	ADG	MCE	Milk	MWW	STAY	DOC	CW	YG	MB	BF	REA	API	TI
	15.3	0.0	82.2	114.5	0.2	7.3	30.2	71.2	20.1	16.7	23.9	-0.28	0.15	-0.053	0.67	148.4	84.3
%	10	25	30			30	10	15	10	10						25	35

SIRE: ROCKIN H CAPTIVATE J75

DAM: TNT F163 - CDI PERSPECTIVE 238A - TNT D246 - TNT 90 PROOF Z401 - TNT U170 - TNT GUNNER N208

Here is a thick, deep bodied, phenotype standout, that was a top for WW, who is a dark, cherry red maternal brother to TNT Regal, our 2nd high seller from our 2020 sale going to TA Cattle. He is sired by Captivate, who commanded \$95,000 in 2022 and we tried hard to own him, coming in as the contenting bidder. We appreciated him for his total outcross pedigree, beautiful dam and striking phenotype, and he now has an extremely impressive set of EPD's to go with! We expect to see his progeny top many sales this year. His dam, F163 is a beautiful, broody, dark red cow with a 107 WW and 105 YW ratio and she is the dam to ET Lots 73 and 83 and she goes back the dams of TNT Everclear and TNT Top Gun. Her 1st calf heifer that is a full sister to TNT Regal is one of the most strikingly beautiful heifers we have on the place.

SALE BULLS

LOT 81 L512 - Homo Polled - Red - PB Simmental - ASA# 4241946

BORN	B.WT.	205 ADJ.	205 INDEX	A.D.G.	W.D.A.	365 ADJ.	WT. 1-4	SCROTAL
03/19/23	100	757	101	3.40	3.42	1301	994	38

EPD	CE	BW	WW	YW	ADG	MCE	Milk	MWW	STAY	DOC	CW	YG	MB	BF	REA	API	TI
	12.1	1.1	82.2	129.8	0.3	5.3	24.7	65.7	16.0	11.5	46.1	-0.2	0.19	-0.036	0.81	138.6	83.4
%	40	45	30	25	20		40	30	45		10		45			40	35

SIRE: CHSR WAYMAKER 93J

DAM: TNT D180 - TNT 90 PROOF Z401 - TNT Z57 - MUSHRUSH IMPRESSIVE CA U236 - TNT X78 - TNT GUNNER N208

A docile, dark red, thick, long sided, powerful made son of Waymaker, a bull we purchased in 2022 from Crosshair Simmentals. He is a dark, cherry red Perspective son that we are real happy with after his first calf crop. His dam, D180, is an easy keeping, deep, productive cow. She has a 103 WW and 104 YW ratio on 6 calves with three Imperial sons selling to excellent, repeat customers and her daughter has had all three of her sons make the sale as well. What an excellent track record! D180 did injure her hip early in the breeding season, so we feel that did impact his performance, but she sure still did an excellent job raising him for how laid up she was.

LOT 82 L731 - Homo Polled - Red - PB Simmental - ASA# 4242112

BORN	B.WT.	205 ADJ.	205 INDEX	A.D.G.	W.D.A.	365 ADJ.	WT. 1-4	SCROTAL
03/24/23	96	828	113	3.46	3.74	1382	1070	35.5

EPD	CE	BW	WW	YW	ADG	MCE	Milk	MWW	STAY	DOC	CW	YG	MB	BF	REA	API	TI
	7.7	2.6	91.3	144.5	0.33	2.9	19.9	65.5	16.1	16.0	39.3	-0.33	0.58	-0.053	0.99	156.6	96.5
%			10	10	10			35	45	10	20		5		30	15	10

SIRE: BRIDLE BIT EFFICIENT J160

DAM: TNT G204 - IR IMPERIAL D948 - TNT E246 - BCLR STUR-D C88-2 - TNT B116 - DCR MR MOON SHINE X102

A deep, thick, powerful made bull. He was our 7th high WW and has been one that caught our eye since birth. His sire is an outcross to the red side, sired by Hooks Eagle, who is homo black and is the #1 sire for registrations in 2022. He was the top feed efficient bull and 3rd high gaining bull in the 2022 Bridle Bit bull sale. His dam is a very attractive, broody made cow out of IR Imperial, who is a trait leader for CE, BW, MCE, Doc, MB and REA. This is a very complimentary mating excelling in growth and carcass traits and bred in docility.

LOT 83 L527 - Homo Polled - Red - PB Simmental - ASA# 4241960

BORN	B.WT.	205 ADJ.	205 INDEX	A.D.G.	W.D.A.	365 ADJ.	WT. 1-4	SCROTAL
03/24/23	102	826	ET	4.05	3.88	1475	1110	40

EPD	CE	BW	WW	YW	ADG	MCE	Milk	MWW	STAY	DOC	CW	YG	MB	BF	REA	API	TI
	12.7	3.7	79.1	109.0	0.19	7.1	26.4	65.8	17.7	15.0	28.7	-0.33	-0.16	-0.088	0.58	115.3	69.6
%	30		45			30	25	30	25	15	50			30			

SIRE: TNT GUNNER N208

DAM: TNT F163 - CDI PERSPECTIVE 238A - TNT D246 - TNT 90 PROOF Z401 - TNT U170 - TNT GUNNER N208

A docile, supreme bull with so much length and muscle expression, while adding in lots of extra eye appeal with a little extra frame, that resembles his great sire, TNT Gunner. We had a few straws of Gunner semen left so when we had a big flush on F163, we decided to split it with Gunner. We only got one embryo to stick, but we really like what it produced! We have had many customers say how much they like their Gunner daughters, they just last forever. His dam, F163, is a beautiful, broody, deep, dark red cow that is the dam to TNT Regal and our favorite 1st calf heifer. She is also the dam to her natural calf, Lot 80 and ET Lot 73 and her dam is the dam to TNT Defender.

LOT 84 L539 - Homo Polled - Red - PB Simmental - ASA# 4241969

BORN	B.WT.	205 ADJ.	205 INDEX	A.D.G.	W.D.A.	365 ADJ.	WT. 1-4	SCROTAL
03/27/23	80	776	104	3.52	3.55	1339	1005	38

EPD	CE	BW	WW	YW	ADG	MCE	Milk	MWW	STAY	DOC	CW	YG	MB	BF	REA	API	TI
	13.1	-1.4	68.5	105.6	0.23	6.2	23.2	57.3	17.3	14.6	32.1	-0.47	0.46	-0.06	1.29	157.3	86.1
%	30	10				45	50		30	20	40	20	10		2	15	30

SIRE: BRIDLE BIT EFFICIENT J160

DAM: TNT G218 - IR IMPERIAL D948 - TNT E285 - TNT BOOTLEGGER Z268 - TNT S17 - TNT FIVE STAR P275

A moderate framed, docile, extremely thick, deep bodied, fault free bull. His sire is our new outcross, hetero black Eagle son that we purchased from Bridle Bit Simmentals. The Eagle progeny have topped many sales over the past years and we were in the market for a red bull and found this hetero black bull. He was one of the top gainers in the sale, indexing 134, yet was one of the top for feed conversion as well, at 123 ratio, not something you see very often. Eagle is the #1 for progeny for 2022. His dam is a broody, deep bodied, perfect uddered Imperial daughter. Her dam is a beautiful Bootlegger x S17 ET that is a full sibling to the dam of Lot 77.

LOT 85 L741 - Homo Polled - Red - PB Simmental - ASA# 4242062

BORN	B.WT.	205 ADJ.	205 INDEX	A.D.G.	W.D.A.	365 ADJ.	WT. 1-4	SCROTAL
04/01/23	100	872	119	3.95	4.05	1504	1125	36.5

EPD	CE	BW	WW	YW	ADG	MCE	Milk	MWW	STAY	DOC	CW	YG	MB	BF	REA	API	TI
	7.8	2.5	83.9	123.2	0.25	3.7	28.0	69.8	20.2	12.1	37.1	-0.43	0.12	-0.061	1.22	135.1	81.2
%			25	35	45		15	20	10	45	25	35			5	45	45

SIRE: BRIDLE BIT EFFICIENT J160

DAM: TNT E236 - TNT 90 PROOF Z401 - TNT W126 - TNT GUNNER N208 - TNT S200 - REMINGTON RED LABEL HR

A long, thick, powerful made bull that was our 2nd high for WW and 9th for WDA. We are very happy with his sire, who is a real anomaly, being the most feed efficient and the 3rd high gaining bull in a 55 head contemporary group and was the 2nd high for REA. His dam is a very productive cow, she has a WW ratio of 110 on 4 calves, with sons selling to Bolme Ranch and Scott Moser in prior sales. She comes from one of our top red cow families and her grand dam was our great F135 donor. Her sire, 90 Proof, was our high selling bull in 2014, a high growth, high maternal sire with top 1% CW and REA. Here is a bull stacked with growth, high maternal and big REA.

SALE BULLS

LOT 86 L564 - Homo Polled - Red - PB SIMMENTAL - ASA# 4241993

BORN	B.WT.	205 ADJ.	205 INDEX	A.D.G.	W.D.A.	365 ADJ.	WT. 1-4	SCROTAL
04/08/23	80	775	119	3.71	3.69	1369	1000	37

EPD	CE	BW	WW	YW	ADG	MCE	Milk	MWW	STAY	DOC	CW	YG	MB	BF	REA	API	TI
	16.5	0.2	78.4	121.3	0.27	8.1	31.2	70.3	17.2	16.6	50.3	-0.29	0.02	-0.069	0.89	137.5	79.5
%	5	30	45	40	35	20	5	15	30	10	5				50	40	50

SIRE: CHSR WAYMAKER 93J

DAM: TNT F151 - TNT TANNERITE B369 - TNT B145 - MR NLC UPGRADE U8676 - TNT S17 - TNT FIVE STAR P275

A docile, high calving ease, high maternal bull with extra depth. His sire is a phenotype standout that did a great job on stamping his first set of calves with this depth and eye appeal. His dam, F151, is a hetero black daughter of the maternal great TNT Tannerite, who is in the top 1% for milk. She has a 107 WW and 108 YW ratio on her first 4 calves and has sold all three past sons in the sale to great, long time customers, and her maternal sister is a front-end pasture type of cow! Their dam is a tremendous S17 x Upgrade daughter with a 104 WW ratio. An excellent cow family!

RED 3/4 SIMANGUS BULLS

LOT 87 L416 - Homo Polled - Red - 3/4 SM 5/32 AR 3/32 AN - ASA# 4241853

BORN	B.WT.	205 ADJ.	205 INDEX	A.D.G.	W.D.A.	365 ADJ.	WT. 1-4	SCROTAL
03/06/23	72	825	110	4.32	3.83	1516	1165	36

EPD	CE	BW	WW	YW	ADG	MCE	Milk	MWW	STAY	DOC	CW	YG	MB	BF	REA	API	TI
	12.5	-0.6	96.7	148.2	0.32	4.8	26.7	74.9	13.6	18.4	56.5	-0.3	0.32	-0.054	1.13	139.2	93.8
%		35	3	5	20		30	5		4	5	30		30	4	40	10

SIRE: GW HILGER ONE 454H

DAM: TNT J726 - CDI PERSPECTIVE 238A - TNT G702 - IR IMPERIAL D948 - TNT E558 - TNT WHISKY RIVER B298

A very docile, dark red, phenotype standout 4th generation SimAngus, with added length of body, that was a top for WW and WDA. His sire is the popular Select Sires outcross sire that is a trait leader for WW, YW and DOC, that also worked well on heifer and has high maternal and carcass traits. His dam is a beautiful, perfect uddered 1st calf heifer that is backed by a powerful cow family. Her dam is a broody Imperial daughter that has a 368-day calving interval and a 106 WW ratio and her dam is one of my favorite red cows, just a beauty to look at!

LOT 88 L430 - Homo Polled - Red - 3/4 SM 1/4 AR - ASA# 4241866

BORN	B.WT.	205 ADJ.	205 INDEX	A.D.G.	W.D.A.	365 ADJ.	WT. 1-4	SCROTAL
03/08/23	74	769	103	4.53	3.76	1494	1135	34.5

EPD	CE	BW	WW	YW	ADG	MCE	Milk	MWW	STAY	DOC	CW	YG	MB	BF	REA	API	TI
	13.3	2.1	94.5	154.0	0.37	7.5	22.9	70.1	16.1	18.4	52.2	-0.26	0.34	-0.045	1.0	142.1	89.8
%		40	4	3	4	40		15	35	4	10	40		45	10	35	20

SIRE: IR IMPERIAL D948

DAM: TNT J747 - TNT IGNITE D370 - TNT D237 - TNT TANNERITE B369 - TNT Y34 - BECKTON HUSTLER S426 C2

ASA# 3210738

A dark red, eye-appealing, very docile, 5th generation SimAngus bull, our 9th high ADG, sired by IR Imperial and out of a beautiful, perfect uddered Ignite daughter. The cross of our performance Ignite daughters on Imperial has been excellent. His dam is a beautiful, broody and deep 1st calf heifer, and she was our #1 WW and YW heifer herself, bringing the power to this mating, and her full brother was exceptional as well, selling to Oak Hill Farms in 2021. Their dam is a phenomenal cow, with a 108 WW and 111 YW ratio on 6 calves and she is the dam to Lot 97.

LOT 89 L426 - Homo Polled - Red - 3/4 SM 1/4 AR - ASA# 4241862

BORN	B.WT.	205 ADJ.	205 INDEX	A.D.G.	W.D.A.	365 ADJ.	WT. 1-4	SCROTAL
03/08/23	94	810	108	3.36	3.64	1348	1100	35

EPD	CE	BW	WW	YW	ADG	MCE	Milk	MWW	STAY	DOC	CW	YG	MB	BF	REA	API	TI
	6.3	3.5	91.4	135.3	0.27	3.3	24.8	70.4	15.5	17.4	37.0	-0.34	0.22	-0.063	0.92	119.0	81.6
%			10	20	45		45	15	40	10	45	20		20	20		45

SIRE: TNT ROYALTY H335

DAM: TNT G725 - TNT IGNITE D370 - TNT X71 - TNTS BIG LEAGUE R242 - TNT U175 - TNT GUNNER N208

A eye-appealing, moderate framed, docile Royalty son with extra depth and thickness, that was a standout on pasture all summer and continued on as in the top end for WW. Royalty was our high selling bull in 2021, who does an excellent job of stamping his calves, who is out of a top-notch Prime Time daughter that has a 365-day calving interval with a 107 WW and 109 YW ratio. His dam, G725, is an extra-broody, moderate framed, beautiful Ignite daughter that we just love, going back to X71, that was one of our favorite cows.

LOT 90 L441 - Homo Polled - Red - 3/4 SM 5/32 AR 3/32 AN - ASA# 4241883

BORN	B.WT.	205 ADJ.	205 INDEX	A.D.G.	W.D.A.	365 ADJ.	WT. 1-4	SCROTAL
03/09/23	78	763	102	4.13	3.47	1424	1045	39.5

EPD	CE	BW	WW	YW	ADG	MCE	Milk	MWW	STAY	DOC	CW	YG	MB	BF	REA	API	TI	
	13.3	0.7	84.9	134.1	0.31	7.7	28.4	70.8	22.2	12.3	40.6	-0.2	0.4	-0.06	0.55	155.1	87.1	
%		40		20	20	25	35	20	15	1	50	35		45	30		20	25

SIRE: DSR INVINCIBLE 81H

DAM: TNT J743 - TNT IGNITE D370 - TNT B5 - TNT TUITION U238 - TNT U27 - TNT GUNNER N208

A dark red, stylish made son of Invincible, a sire we are incredibly happy with, that was the high seller for Deckert Simmentals in 2021. He is an extremely easy calving sire who is still in the top 3% for CE, 10% for BW, 20% for YW and 10% for ADG, along with high maternal and carcass traits. Invincible's dam has a 107 WW and 107 YW on her 8 calves, and is now a donor for DSR. His dam is a 1st calf heifer sired by Ignite, who averaged 109 WW index on his calves this fall and his daughters are extremely easy fleshing with lots of performance and excellent udders.

SALE BULLS



Lot 91



Lot 92



Lot 93



Lot 94



Lot 95



Lot 96



Lot 97



Lot 98



Lot 99



Lot 100



Lot 101



Lot 102



Lot 103



Lot 104



Lot 105

34 – View video of every bull on our website or Facebook!

www.tntsimmentals.com • Facebook/tntsimmentalranch

SALE BULLS

LOT 91 L462 - Homo Polled - Red - 3/4 SM 1/4 AN - ASA# 4241898

BORN	B.WT.	205 ADJ.	205 INDEX	A.D.G.	W.D.A.	365 ADJ.	WT. 1-4	SCROTAL
03/12/23	82	804	108	3.85	3.74	1421	1115	39.5

EPD	CE	BW	WW	YW	ADG	MCE	Milk	MWW	STAY	DOC	CW	YG	MB	BF	REA	API	TI
	14.8	-0.4	80.7	117.3	0.23	7.9	32.5	72.7	12.7	16.5	26.7	-0.37	0.24	-0.072	0.81	127.8	82.4
%	25	40	30	50		35	4	10		10		15		10	30		45

SIRE: ROCKIN H CAPTIVATE J75

DAM: ES E127 - CDI AUTHORITY 77X - EIR T212 - GLACIER CHATEAU 744 - EIR P211 - RED PIE ATLANTIC 2204

A very docile, powerful, longer bodied bull with a touch more frame, sired by the hot outcross red sire, Captivate, who sold for \$95,000, a bull that we were contending bidder on, we really wanted to run him on our pastures. He turned out to be a CE sire that also sires lots of growth, as a trait leader for CE, WW and YW after only one calf crop. This bulls dam is a docile, stylish Authority daughter that we purchased from Eichacker Simmentals and we are sure glad we did. She has a 109 WW and 107 YW ratio, with all 3 sons making the sale. This mating should add pounds and sire outstanding females as well.

LOT 92 L703 - Homo Polled - Red - 3/4 SM 1/8 AR 3/32 CS 1/32 AN - ASA# 4242070

BORN	B.WT.	205 ADJ.	205 INDEX	A.D.G.	W.D.A.	365 ADJ.	WT. 1-4	SCROTAL
03/14/23	78	780	106	3.97	3.75	1415	1110	39

EPD	CE	BW	WW	YW	ADG	MCE	Milk	MWW	STAY	DOC	CW	YG	MB	BF	REA	API	TI
	16.8	-1.8	79.1	119.4	0.25	9.2	27.9	67.4	19.5	14.8	18.8	-0.3	0.39	-0.056	0.63	154.7	86.6
%	10	20	35	45		20	20	25	10	25		30	45	30		20	30

SIRE: DSR INVINCIBLE 81H

DAM: TNT F110 - LEACHMAN CADILLAC L025A - TNT U27 - TNT GUNNER N208 - TNT S168 - CNS DREAM ON L186

A dark cherry red, long bodied bull that should work great on heifers. He ratioed 91 for BW and his sire is extremely easy calving, ranking in the top 25% or higher for CE, BW, YW, ADG, MCE, Milk, MWW, Stay, CW, MB, BF, API & TI. His dam is a solid black daughter of the very popular, high use ABS Sire Leachman Cadillac, back to a tremendous daughter of the great TNT Gunner. She has a WW ratio of 108 on her calves and her dam, S168, was a donor for Rust Mountain View Ranch, a very strong cow family. If you need a bull that can be used on heifers and move up to cows, he is an excellent choice and his daughters should be excellent.

LOT 93 L479 - Homo Polled - Red - 3/4 SM 1/8 AN 1/8 AR - ASA# 4241924

BORN	B.WT.	205 ADJ.	205 INDEX	A.D.G.	W.D.A.	365 ADJ.	WT. 1-4	SCROTAL
03/14/23	80	755	101	3.75	3.41	1355	1010	35

EPD	CE	BW	WW	YW	ADG	MCE	Milk	MWW	STAY	DOC	CW	YG	MB	BF	REA	API	TI
	14.8	-0.2	78.4	129.1	0.32	6.8	23.7	62.8	13.3	13.9	38.1	-0.09	0.27	-0.015	0.55	131.3	80.6
%	25	40	40	25	20	50		45		30	40						50

SIRE: OUTBACK J16

DAM: TNT J704 - RFS BULLETPROOF B42 - TNT F555 - TNT 90 PROOF Z401 - TNTS X72 - BECKTON HUSTLER S426 C2

Here is a darker red bull who is thick, deep and extra heavy muscled with exceptional phenotype. His sire is a bull we purchased for his outcross pedigree to our program. He is dark red, extremely heavy muscled and was a heifer bull dream, that really injects his phenotype into his progeny. His dam is a 1st calf heifer that is a broody, moderate framed beauty that was our 12th high WW and 3rd high YW herself. We are very happy with our Bulletproof daughters. She goes back to a beautiful 90 Proof daughter and her granddam is a PB Red Angus cow that produced many excellent daughters for us.

LOT 94 L506 - Homo Polled - Red Blaze - 3/4 SM 1/4 AR - ASA# 4241942

BORN	B.WT.	205 ADJ.	205 INDEX	A.D.G.	W.D.A.	365 ADJ.	WT. 1-4	SCROTAL
03/17/23	80	796	106	4.24	3.81	1474	1115	41

EPD	CE	BW	WW	YW	ADG	MCE	Milk	MWW	STAY	DOC	CW	YG	MB	BF	REA	API	TI
	16.3	-2.1	76.5	121.0	0.28	9.5	27.8	65.9	18.0	13.5	27.0	-0.33	0.53	-0.048	0.89	159.7	89.5
%	15	15	45	40	40	15	20	30	15	35		20	25	45	20	15	20

SIRE: DSR INVINCIBLE 81H

DAM: TNT H148 - IR IMPERIAL D948 - TNT D240 - PELTON CONQUEST 258A - TNT B60 - BROWN JY REDEMPTION Y1334

A docile, deep bodied, extremely attractive, red blaze faced 5th generation SimAngus bull that we feel will work on larger heifers, sired by Invincible, the red blazed face Bulletproof son that works so well on heifers, yet still gives them lots of growth, with high maternal traits as well. We are excited to calve his first daughters this year. His dam, H148 is beautiful uddered, broody made Imperial daughter that has a 108 WW ratio on her first two calves. We are extremely happy with our Imperial daughters. They have ideal udder quality and have been great producers for us.

LOT 95 L532 - Homo Polled - Red - 3/4 SM 7/32 AR 1/32 AN - ASA# 4241963

BORN	B.WT.	205 ADJ.	205 INDEX	A.D.G.	W.D.A.	365 ADJ.	WT. 1-4	SCROTAL
03/26/23	68	752	101	4.55	3.70	1480	1050	34

EPD	CE	BW	WW	YW	ADG	MCE	Milk	MWW	STAY	DOC	CW	YG	MB	BF	REA	API	TI
	12.6	-2.6	83.5	137.3	0.34	6.1	24.6	66.3	18.2	11.5	38.8	-0.25	0.96	-0.034	0.91	183.2	104.2
%	50	15	25	15	10		45	30	15		40	45	2		20	2	1

SIRE: MR SR RED OCTOBER G1761

DAM: DSR J134 - GW COPPERHEAD 919G - DSR 822F - PLR IDEALISTIC 183C - DSR 689D - LSF SRR REDEMPTION 4004B

A very docile, dark red, broody made 5th generation SimAngus bull with a calving ease look to him that has been our 8th high for gain. Our oldest daughter Teagan purchased his dam from Deckert Simmentals last year as their feature, high selling bred heifer for her FFA project, and she just loves her! She is a beautiful, feminine made, deep bodied, extremely docile heifer that was their #2 WW and #1 YW heifer, and her dam has a 108 WW and 112 YW ratio on her 4 calves, back to another excellent cow. Her sire is the popular ABS sire GW Copperhead, the high seller at Gateway Simmentals. This calf is sired by Red October, an Imperial son known for his CE and high carcass traits.

SALE BULLS

LOT 96 L535 - Homo Polled - Red - 3/4 SM 3/16 AR 1/16 AN - ASA# 4241967

BORN	B.WT.	205 ADJ.	205 INDEX	A.D.G.	W.D.A.	365 ADJ.	WT. 1-4	SCROTAL
03/27/23	94	801	107	3.64	3.69	1383	1045	35.0273

EPD	CE	BW	WW	YW	ADG	MCE	Milk	MWW	STAY	DOC	CW	YG	MB	BF	REA	API	TI
	5.8	4.3	91.3	143.7	0.33	0.9	27.4	73.0	15.7	12.8	49.6	-0.46	0.2	-0.096	1.2	119.0	81.6
%			10	10	15		25	10	40	45	15	2		2	2		45

SIRE: TNT ROYALTY H335

**DAM: DSR 942G - RFS BULLETPROOF B42 - DSR B418 - LSF HERDBUILDER
1058Y - DSR W373 - DSR SIGNATURE T458**

A darker red, deep bodied 5th generation SimAngus bull with a touch of extra frame, sired by TNT Royalty who is a long bodied, thick, powerful made bull that was one of our top WW bulls and never slowed up, as our 3rd high for gain and 4th high for YW adjust and was our high seller in our 2021 sale. Royalty's dam has been exceptional as well and with a top-end track record. His dam, 942G, was our top pick at DSR sale in 2021, a dark red, deep bodied Bulletproof daughter with a 109 WW and 111 YW ratio on her first three calves and her dam has been a great producer for DSR with a 103 WW ratio on 8 calves and still going strong. We sold an excellent full brother to this bull in last years sale, going to Terry Henderson and her first calf was excellent as well, going to Duck Creek Simmentals.

LOT 97 L578 - Homo Polled - Red - 3/4 SM 1/4 AR - ASA# 4242004

BORN	B.WT.	205 ADJ.	205 INDEX	A.D.G.	W.D.A.	365 ADJ.	WT. 1-4	SCROTAL
04/16/23	90	798	107	3.97	3.86	1433	1015	41.5

EPD	CE	BW	WW	YW	ADG	MCE	Milk	MWW	STAY	DOC	CW	YG	MB	BF	REA	API	TI
	13.4	0.0	73.1	110.3	0.23	6.7	27.2	63.7	16.7	17.5	36.9	-0.07	0.14	-0.022	0.42	124.3	73.2
%		40	45				25	40	30	10	45						

SIRE: CHSR WAYMAKER 93J

**DAM: TNT D237 - TNT TANNERITE B369 - TNT Y34 - BECKTON HUSTLER S426
C2 - TNT U155 - TNT GUNNER N208**

A darker red, deep, broody made, docile, 5th generation SimAngus, who is a phenotype standout, out of the dark red, herdsire we bought in 2022 from Crosshair Simmental, a blend of calving ease and superior phenotype. He was their 10th high for WW, out of a CDI Perspective and a Rymo Power Surge 1st calf heifer. His dam is a extra broody, powerful cow with top 5% milk. She has a 108 WW and 111 YW ratio on her calves with a 368-day calving interval. Her Ignite daughter was our #1 WW and YW heifer in 2021, just an absolute beauty that is the dam to Lot 88 and her full brother was one of our best red calves in 2022, going to Oak Hill Farms.

LOT 98 L581 - Homo Polled - Red - 3/4 SM 5/32 AR 3/32 AN - ASA# 4242009

BORN	B.WT.	205 ADJ.	205 INDEX	A.D.G.	W.D.A.	365 ADJ.	WT. 1-4	SCROTAL
04/21/23	100	850	114	4.12	4.01	1509	1035	36.5

EPD	CE	BW	WW	YW	ADG	MCE	Milk	MWW	STAY	DOC	CW	YG	MB	BF	REA	API	TI
	6.9	2.5	93.6	144.2	0.32	2.9	27.9	74.6	20.8	14.6	46.2	-0.2	0.07	-0.063	0.6	125.0	80.5
%			5	10	20		20	5	3	25	20			20			50

SIRE: CHSR WAYMAKER 93J

**DAM: TNT H751 - TNT IGNITE D370 - TNT Z63 - MR NLC COMPLETE X0080 -
TNT U27 - TNT GUNNER N208**

A moderate framed, soggy made, deep bodied, 4th generation SimAngus bull that was our 8th high for WW and a top for WDA and YW, out of Waymaker, a dark red, stylish made son of CDI Perspective. We really like the style and eye-appeal that Waymaker puts in to his calves. His dam, H751, is a Ignite daughter, we have lots of them in production and are very happy with them. They offer lots of maternal strength with extra performance. Her dam was just tremendous, a larger framed cow with a 367-day calving interval on her 8 calves and a 110 WW and 109 YW ratio. She sold all her sons in the sale and all her daughters are still in production. Her dam had a 108 WW and 106 YW ratio on her 9 calves.

RED 5/8 SIMANGUS BULLS

LOT 99 L451 - Homo Polled - Red - 5/8 SM 9/32 AR 3/32 AN - ASA# 4241888

BORN	B.WT.	205 ADJ.	205 INDEX	A.D.G.	W.D.A.	365 ADJ.	WT. 1-4	SCROTAL
03/10/23	92	819	110	4.39	4.00	1521	1200	38.5

EPD	CE	BW	WW	YW	ADG	MCE	Milk	MWW	STAY	DOC	CW	YG	MB	BF	REA	API	TI
	8.2	2.0	88.7	131.4	0.27	4.6	29.3	73.5	17.3	15.0	45.9	-0.14	0.45	-0.028	0.68	138.5	87.4
%			15	25	45		15	10	20	20	20		35			40	25

SIRE: GW HILGER ONE 454H

**DAM: TNT G209 - LMG GILLS INDEED 4736 - TNT D264 - TNT BOOTLEGGER
Z268 - TNT S17 - TNT FIVE STAR P275**

A darker red, long-sided, deep bodied, high performance bull, a top for ADG, WDA and YW, sired by Hilger One, the Select Sires outcross sire that is a trait leader for WW, YW and DOC, and has high maternal and carcass traits. His dam, G209, is an excellent uddered, moderate framed 3rd calver out of Gills Indeed, our Red Angus herd bull that has sired many exceptional, long-lasting daughters for us. Her dam is a broody made ET daughter of TNT Bootlegger and our S17 donor cow. She has a WW ratio of 105 and YW of 108 on her calves, with a 363-day calving interval and is the dam to Lot 77.

LOT 100 L476 - Homo Polled - Red - 5/8 SM 1/4 AR 1/8 AN - ASA# 4241904

BORN	B.WT.	205 ADJ.	205 INDEX	A.D.G.	W.D.A.	365 ADJ.	WT. 1-4	SCROTAL
03/13/23	88	784	105	3.46	3.64	1337	1080	35

EPD	CE	BW	WW	YW	ADG	MCE	Milk	MWW	STAY	DOC	CW	YG	MB	BF	REA	API	TI
	8.5	1.6	86.0	132.3	0.29	5.2	22.7	65.6	16.5	15.6	40.2	-0.22	0.43	-0.031	0.84	136.8	85.8
%			20	20	35			30	30	15	35		40		30	45	30

SIRE: BRIDLE BIT EFFICIENT J160

**DAM: TNT F554 - RYMO POWER SURGE G39D - TNTS C422 - RUST RECOIL 46A -
TNTS Z101 - TNTS BIG LEAGUE R242**

A medium framed, deep bodied, soggy made, docile son of Efficient, a hetero black Eagle son that we purchased from Bridle Bit Simmentals. The Eagle progeny have topped many sales over the past years and we were in the market for a red bull and found this hetero black bull. He was one of the top gainers in the sale, indexing 134, yet was one of the top for feed conversion as well, at 123 ratio, not something you see very often. His dam, F554, raised one of our best red bulls last year going to Schulz Farms, and her dam is out of a PB AR cow that has a 105 WW and 110 YW ratio, back to a 12 year old TNTS Big League daughter.

SALE BULLS

LOT 101 L498 - Homo Polled - Red - 5/8 SM 1/4 AR 1/8 AN - ASA# 4241936

BORN	B.WT.	205 ADJ.	205 INDEX	A.D.G.	W.D.A.	365 ADJ.	WT. 1-4	SCROTAL
03/16/23	94	767	103	3.81	3.50	1377	1030	39.5

EPD	CE	BW	WW	YW	ADG	MCE	Milk	MWW	STAY	DOC	CW	YG	MB	BF	REA	API	TI
	3.5	3.9	84.3	132.8	0.3	1.6	27.4	69.5	16.3	14.2	53.2	-0.12	-0.01	-0.032	0.69	100.8	70.1
%			20	20	30		25	20	30	30	10						

SIRE: TNT DOZER F439

DAM: TNT H141 - TNT DEFENDER F405 - TNT D251 - TNT BOOTLEGGER Z268 - TNT S17 - TNT FIVE STAR P275

A thick, stout, dark red, high maternal bull, sired by TNT Dozer, a bull that Oak Hill Farms from NY purchased in 2019. Eric just loves his calves and says they are the best sire group he has ever had, so we decided to try him for ourselves. He is a high growth sire that averaged 107 WW ratio on his 7 calves we had, and all are tremendous. Dozer is a maternal brother to our TNT Ignite bull that has many progeny that have sold in the sale and we have several replacements out of him. His dam is a broody, dark red, perfect uddered Defender daughter, out of a S17 x Bootlegger dam, that sold all her bulls in the sale, and we have retained all her daughters.

LOT 102 L710 - Homo Polled - Red - 5/8 SM 5/16 AR 1/16 AN - ASA# 4242174

BORN	B.WT.	205 ADJ.	205 INDEX	A.D.G.	W.D.A.	365 ADJ.	WT. 1-4	SCROTAL
03/16/23	96	826	112	4.05	4.03	1474	1185	40

EPD	CE	BW	WW	YW	ADG	MCE	Milk	MWW	STAY	DOC	CW	YG	MB	BF	REA	API	TI
	10.7	2.9	93.0	150.1	0.36	5.6	30.5	76.9	15.6	18.7	44.4	-0.25	0.35	-0.042	0.9	135.7	88.3
%			5	4	10		10	3	40	3	25	45	50	45	20	45	25

SIRE: TNT REGAL H367

DAM: TNT J130 - WFL MERLIN 018A - TNT G106 - TNT TANNERITE B369 - TNT C090 - TNT BULLET PROOF X240

A bull that stood out since the day he hit the ground. His sire was out of one of our favorite red cows, F163. She has a WW ratio of 107 and is a current donor with a Gunner son and Captivate sons in the sale, Lots 73, 80 and 83. We have Regal daughters that will calve this spring and they look beautiful. His dam, J130, is one of our favorite 1st calf heifers, broody made with a perfect udder. She ratioed 111 at weaning herself and her dam is a TNT Tannerite daughter who are some of our most productive. She is the dam to Lot 78. He is a bull that does so many things right, outstanding performance stacked with maternal. His daughters will be excellent with a puppy dog disposition.

LOT 103 L499 - Homo Polled - Red - 5/8 SM 5/16 AR 1/16 AN - ASA# 4241935

BORN	B.WT.	205 ADJ.	205 INDEX	A.D.G.	W.D.A.	365 ADJ.	WT. 1-4	SCROTAL
03/16/23	98	797	107	4.18	3.86	1465	1135	39

EPD	CE	BW	WW	YW	ADG	MCE	Milk	MWW	STAY	DOC	CW	YG	MB	BF	REA	API	TI
	6.6	1.9	77.4	122.8	0.28	4.9	23.8	62.4	12.2	16.4	42.1	-0.2	0.28	-0.033	0.81	114.2	76.4
%			45	40	40			45		10	30				30		

SIRE: TNT ROYALTY H335

DAM: TNT G152 - LMG GILLS INDEED 4736 - TNT D166 - TNT SNIPER B290 - TNT A80 - DCR MR MOON SHINE X102

Here is a dark red, powerhouse, stud of a bull that is thick and deep with lots of added eye appeal. His sire was our high selling bull from 2021 that does an excellent job of stamping his calves with his extra length and thickness. Royalty is out of a top-notch Prime Time daughter that has a 365-day calving interval with a 107 WW and 109 YW ratio, the dam to Lot 74 and her dam raised our high seller in 2019, TNT Defender. His dam is a broody, deep bodied Indeed daughter, that has a beautiful 1st calf heifer at our place as well. She is out of a Sniper daughter whose dam is still working at Hanging H Ranch, with a 110 WW and 113 YW ratio.

LOT 104 L713 - Homo Polled - Red - 5/8 SM 5/16 AR 1/16 AN - ASA# 4242123

BORN	B.WT.	205 ADJ.	205 INDEX	A.D.G.	W.D.A.	365 ADJ.	WT. 1-4	SCROTAL
03/17/23	88	815	TW	4.74	4.27	1573	1250	35

EPD	CE	BW	WW	YW	ADG	MCE	Milk	MWW	STAY	DOC	CW	YG	MB	BF	REA	API	TI
	5.8	6.3	110.3	177.5	0.42	2.4	28.5	83.4	13.6	18.4	67.9	-0.28	0.27	-0.062	1.13	122.3	92.0
%			1	1	1		20	1		4	1	35		20	4		15

SIRE: BRIDLE BIT EFFICIENT J160

DAM: TNT H127 - G A R PROPHET - TNT S17 - TNT FIVE STAR P275 - TNT L9 - JF NEW DIMENSION 903J

A real outcross red bull, that was our 2nd high ADG, 3rd for WDA and 6th for YW, whose sire is out of the very popular, high use black sire, Hooks Eagle, that is hetero black and was one of the top gaining and most feed efficient bulls at the Bridle Bit bulls sale in 2022. His dam is an ET daughter of our S17 donor, the dam to Tanker, 90 Proof and Tannerite, whose daughters are some of our best. Her sire is G A R Prophet, a highly proven sire who is a current trait leader for WW, YW, ADG, MCE, Milk, MWW, CW and MB. Here is a bull with an A+ disposition and is a sure bet to add pounds and high producing daughters.

LOT 105 L519 - Homo Polled - Red - 5/8 SM 7/32 AR 5/32 AN - ASA# 4241953

BORN	B.WT.	205 ADJ.	205 INDEX	A.D.G.	W.D.A.	365 ADJ.	WT. 1-4	SCROTAL
03/20/23	92	877	117	4.56	4.22	1607	1225	40

EPD	CE	BW	WW	YW	ADG	MCE	Milk	MWW	STAY	DOC	CW	YG	MB	BF	REA	API	TI
	3.3	3.9	98.1	155.8	0.36	2.4	24.8	73.7	16.9	14.5	72.1	-0.15	0.28	-0.066	0.78	124.2	85.8
%			2	3	10		45	10	25	25	1			20	35		30

SIRE: TNT DOZER F439

DAM: TNT G702 - IR IMPERIAL D948 - TNT E558 - TNT WHISKY RIVER B298 - TNTS Z73 - FREYS GRAND PRIX 502S

A beef bull supreme with length, volume, muscle and massive dimension, with top end performance as our #2 WW bull, 3rd high YW, 4th WDA and 7th ADG with a puppy dog disposition. We sold his sire in 2019 to Oak Hill Farms and they love his progeny so much that we decided to AI a few cow to him. Of the 7 we got, he averaged a 107 WW index. He comes from an excellent cow family, as his dam is also the dam to TNT Ignite, our long time herd bull that has numerous, tremendous daughters in the herd. She had a 107 WW and 109 YW ratio. His dam, G702, is a broody, dark red Imperial daughter with a 106 WW index and her dam is a dark red, beautiful made Whiskey River daughter that has also been excellent for us, back to a long-lasting PB Red Angus cow. This is a bull sure to add growth and highly productive replacements.

SALE BULLS



Lot 106



Lot 107



Lot 108



Lot 109



Lot 110



Lot 111



Lot 112



Lot 113



Lot 114



Lot 115



Lot 116



Lot 117



Lot 118



Lot 119



Granddam to Lot 116

SALE BULLS

LOT 106 L556 - Homo Polled - Red - 5/8 SM 3/8 AR - ASA# 4241987

BORN	B.WT.	205 ADJ.	205 INDEX	A.D.G.	W.D.A.	365 ADJ.	WT. 1-4	SCROTAL									
04/03/23	74	793	106	4.17	3.80	1460	1050	36.5									
EPD	CE	BW	WW	YW	ADG	MCE	Milk	MWW	STAY	DOC	CW	YG	MB	BF	REA	API	TI
	15.2	-1.6	80.1	118.3	0.24	8.0	28.5	68.5	18.1	15.9	36.4	-0.15	0.1	-0.047	0.47	133.1	78.9
%	25	20	35	45		35	20	20	15	15	45			45		50	25

SIRE: CHSR WAYMAKER 93J

DAM: TNT H734 - TNT IGNITE D370 - TNTS Z101 - NTS BIG LEAGUE R242 - LOOSLI 337 - GLACIER CHATEAU 744

A stylish made, deep bodied bull with an excellent disposition. His sire is a dark, cherry red CDI Perspective son that works as a great cross on our high growth Ignite daughters, adding some calving ease while still getting lots of added growth from Ignite, a sire that continues to bring home many of our top WW and YW calves year after year, while passing on his excellent disposition. His dam is an Ignite 2nd calver that has a 108 WW ratio on her 1st two calves, raising an excellent Imperial son last year going to Mike and Florian Pierzinski. She goes back to a 12 yr. old Big League daughter. He should sire excellent replacement and add pounds as well.

RED 1/2 SIMANGUS BULLS

LOT 107 L662 - Homo Polled - Red - 1/2 SM 1/2 AR - ASA# 4242215

BORN	B.WT.	205 ADJ.	205 INDEX	A.D.G.	W.D.A.	365 ADJ.	WT. 1-4	SCROTAL									
03/05/23	68	761	104	3.73	3.44	1357	1050	36.5									
EPD	CE	BW	WW	YW	ADG	MCE	Milk	MWW	STAY	DOC	CW	YG	MB	BF	REA	API	TI
	16.3	-2.6	76.0	120.1	0.28	9.1	25.7	63.6	15.9	15.7	38.2	-0.14	0.51	-0.034	0.54	153.8	88.0
%	15	15	50	45	40	20	35	40	35	15	40		30			20	25

**SIRE: 5L LEADING EDGE 15383-117C
ASA# 4024030**

DAM: TNT J200 - IR IMPERIAL D948 - TNT E132 - WS PRIME TIME B6 - TNT B148 - W1545 HR

Here is a thick, deep-bodied, docile, stylish-made, sure shot heifer bull that ratioed 85 for birth weight. We used his sire because he was so highly recommended by one of the owners of Beef 360. He is a sire with superior foot quality, fleshing ability and superior daughters, plus heifer safe CE. His dam is a beautiful daughter of the highly proven CE sire Imperial. He is a CE, BW, MCE, DOC, and Marbling trait leader. This is a heifer bull that does not sacrifice growth and the daughters should make top notch, long lasting cows.

LOT 108 L548 - Homo Polled - Red - 1/2 SM 1/2 AR - ASA# 4241979

BORN	B.WT.	205 ADJ.	205 INDEX	A.D.G.	W.D.A.	365 ADJ.	WT. 1-4	SCROTAL									
03/29/23	100	783	105	4.04	3.79	1429	1065	37									
EPD	CE	BW	WW	YW	ADG	MCE	Milk	MWW	STAY	DOC	CW	YG	MB	BF	REA	API	TI
	3.2	4.2	83.5	136.3	0.33	-2.0	23.2	64.9	11.4	13.8	40.2	-0.15	0.45	-0.032	0.61	116.3	80.8
%			25	15	15			35		35	35		35				50

SIRE: TNT ROYALTY H335

DAM: TNTS Z21 - BECKTON LANCER S281 T7 - U114 - BECKTON HUSTLER S426 C2 - TBS 125

An attractive made, high performance Royalty son with a docile disposition. Royalty was our high selling bull from 2021, who does an excellent job of stamping his calves with his extra length and thickness. Royalty's dam is a top-notch Prime Time daughter, who also raised our high selling red bull in 2022, going to Kunkel Simmentals. Her dam had a WW ratio of 108 and a YW of 110 and is the dam to TNT Defender, owned by Hanging H Ranch. His dam, Z21, is a long-lasting 12 year old PB Red Angus that is broody made with extra frame for a Red Angus.

RED 3/8 SIMANGUS BULLS

LOT 109 L440 - Homo Polled - Red - 3/8 SM 5/8 AR - ASA# 4241873

BORN	B.WT.	205 ADJ.	205 INDEX	A.D.G.	W.D.A.	365 ADJ.	WT. 1-4	SCROTAL									
03/09/23	74	767	103	3.48	3.50	1325	1055	37									
EPD	CE	BW	WW	YW	ADG	MCE	Milk	MWW	STAY	DOC	CW	YG	MB	BF	REA	API	TI
	16.3	-2.0	71.8	115.5	0.27	9.3	33.4	69.3	14.6	9.9	27.1	-0.05	0.25	0.009	0.48	130.4	77.4
%	15	20			45	15	3	20	50								

SIRE: SUTPHIN'S OUT IN FRONT 6699

DAM: TNT F186 - TNT TANNERITE B369 - TNT W156 - BECKTON HUSTLER S426 C2 - TNT T129 - TNT GUNNER N208

Here is a 4th generation SimAngus, a dark red, deep bodied, very attractive heifer bull with high maternal traits and so much more. His sire indexed 132 for gain 117 for YW and 110 for feed efficiency and was the high selling Red Angus at the Midland bull test sale. His dam is a fancy-made, broody daughter of the cow making TNT Tannerite. She ranks in the top 1% for Milk with a WW and YW ratio of 110 and a 365-day calving interval on four calves. An easy choice for siring top producing, long lasting replacements. Her maternal sister is the dam Lot 115.

LOT 110 L470 - Homo Polled - Red - 3/8 SM 5/8 AR - ASA# 4241908

BORN	B.WT.	205 ADJ.	205 INDEX	A.D.G.	W.D.A.	365 ADJ.	WT. 1-4	SCROTAL									
03/13/23	72	785	105	4.16	3.70	1450	1100	40.5									
EPD	CE	BW	WW	YW	ADG	MCE	Milk	MWW	STAY	DOC	CW	YG	MB	BF	REA	API	TI
	12.3	-1.6	82.8	142.4	0.37	7.6	28.5	69.8	11.1	16.8	42.4	-0.11	0.62	-0.001	0.77	144.4	92.8
%		20	25	10	4	40	20	15		10	30		15		40	30	15

SIRE: BIEBER CL STOCKMARKET E119

DAM: TNT J159 - TNT DEFENDER F405 - TNT F124 - RYMO POWER SURGE G39D - TNT C090 - TNT BULLET PROOF X240

An extremely eye-appealing 5th generation SimAngus bull with added length, power, neck extension and a touch extra frame for a higher % Red Angus bull with the docile disposition of his sire, the very popular Stockmarket from Select Sires lineup that is known for his ability to make multi-trait improvements, combining CE and maternal with performance and growth, while stamping his calves with excellent phenotype and he did just that with this bull! His dam, J159, is a 1st calf heifer that was one of our top WW and YW heifers herself, out of a high performance, broody made cow with a 108 WW and 107 YW ratio, back to a Bullet Proof dam with a 109 WW ratio, the granddam to Lot 78.

SALE BULLS

LOT 111 L707 - Homo Polled - Red - 3/8 SM 5/8 AR - ASA# 4242073

BORN	B.WT.	205 ADJ.	205 INDEX	A.D.G.	W.D.A.	365 ADJ.	WT. 1-4	SCROTAL
03/15/23	86	847	115	3.77	3.88	1450	1145	37.5

EPD	CE	BW	WW	YW	ADG	MCE	Milk	MWW	STAY	DOC	CW	YG	MB	BF	REA	API	TI
	11.9	2.6	88.4	138.0	0.31	7.0	32.2	76.3	14.9	14.3	34.3	-0.18	0.14	-0.02	0.72	117.8	78.9
%			15	15	25	50	4	4	45	30	50				45		

SIRE: SUTPHIN'S OUT IN FRONT 6699

DAM: TNT F174 - TNT TANNERITE B369 - TNT Y89 - NTS BIG LEAGUE R242 - TNT R25 - BFCK CHEROKEE CNYN 4912

A long, thick, powerful made docile bull. We love his sire. He caught our eye at the 2021 Midland Bull test, a big volumed, stout made, phenotype standout. He indexed 132 for ADG, 117 for YW, 110 for Efficiency and 119 for final weight and we are very glad we bought him. His dam, F174, has been exceptional. She has a WW ratio of 110 on 4 calves with a 364-day calving interval. She ranks in the top 1% for milk and has a beautiful udder. The Tannerite daughters are some of our top producers. He is a maternal brother to Tanker. This is a little larger framed Out In Front son that is sure to add pounds and top replacements.

LOT 112 L727 - Homo Polled - Red - 3/8 SM 5/8 AR - ASA# 4242057

BORN	B.WT.	205 ADJ.	205 INDEX	A.D.G.	W.D.A.	365 ADJ.	WT. 1-4	SCROTAL
03/21/23	82	783	107	3.85	3.75	1400	1085	36

EPD	CE	BW	WW	YW	ADG	MCE	Milk	MWW	STAY	DOC	CW	YG	MB	BF	REA	API	TI
	12.6	-1.8	76.6	126.0	0.31	5.9	25.2	63.4	13.5	10.9	29.0	-0.24	0.35	-0.027	0.8	132.0	82.3
%	50	20	45	30	25		40	40				45	50		35	50	45

SIRE: SUTPHIN'S OUT IN FRONT 6699

DAM: TNT E199 - BCLR STUR-D C88-2 - TNT B78 - DCR MR MOON SHINE X102 - TNTS S102 - LELAND VACATION 4021

A very attractive, dark red, big volumed, long bodied docile son of Out In Front, a very consistent sire who stamps his calves with his image. This is a very predictable mating; a full brother in last years sale sold to Greg Cliffman. His dam is a daughter of Bichler Stur-D, who was the high selling red bull in the 2016 Bichler Simmental sale. She has been a very consistent producer and has raised 5 calves with a 361-day calving interval and is bred back on with a full brother this spring.

RED 1/4 SIMANGUS BULLS

LOT 113 L448 - Homo Polled - Red - 1/4 SM 3/4 AR - ASA# 4241879

BORN	B.WT.	205 ADJ.	205 INDEX	A.D.G.	W.D.A.	365 ADJ.	WT. 1-4	SCROTAL
03/09/23	68	749	100	4.01	3.54	1390	1065	36

EPD	CE	BW	WW	YW	ADG	MCE	Milk	MWW	STAY	DOC	CW	YG	MB	BF	REA	API	TI
	13.8	-3.4	70.3	120.9	0.32	8.9	26.0	61.0	12.4	13.2	32.9	-0.03	0.63	0.024	0.59	146.8	86.9
%	35	10		40	20	20	35			40			15			30	30

SIRE: BIEBER CL STOCKMARKET E119

DAM: TNT H727 - TNT IGNITE D370 - TNT D524 - TNT PRODIGY B366 - TNTS Z100 - FREYS GRAND PRIX 502S

A darker red, smooth made, deep bodied bull that we feel comfortable to recommend for use on heifers with an excellent disposition. He is sired by the now deceased, heavily used Select Sires bull that gives his calves that extra length of body, depth of rib and is a trait leader for for BW, ADG, MCE, DOC and top 1% MB and TI and top 4% API. His dam is a beautiful, broody made, ideal uddered Ignite daughter with a 366-day calving interval and a 85 BW ratio on her first 2 calves, going back to her excellent Z100 Red Angus granddam.

LOT 114 L706 - Homo Polled - Red - 1/4 SM 3/4 AR - ASA# 4242090

BORN	B.WT.	205 ADJ.	205 INDEX	A.D.G.	W.D.A.	365 ADJ.	WT. 1-4	SCROTAL
03/14/23	78	714	97	3.88	3.46	1335	1025	37.5

EPD	CE	BW	WW	YW	ADG	MCE	Milk	MWW	STAY	DOC	CW	YG	MB	BF	REA	API	TI
	17.2	-2.1	73.2	114.4	0.26	9.4	28.0	64.6	15.4	11.1	19.2	-0.04	0.19	-0.002	0.24	129.6	76.1
%	10	15			50	15	20	35	40								

SIRE: SUTPHIN'S OUT IN FRONT 6699

DAM: TNT G128 - SCHULER REBEL 0029X - TNT E132 - WS PRIME TIME B6 - TNT B148 - W1545 HR

A hard to fault, dark red, docile, more moderate framed bull that should work great on heifers, ratioing 91 for BW. We have used his sire on a few heifers with zero problems and his dam is a daughter of Schuler Rebel, a highly proven heifer bull. His sire, Out in Front, is a very consistent sire. He was the high selling, high indexing, top gaining and top feed efficiency Red Angus at the 2021 Midland Bull test. We absolutely love his calves, they are all stamped one like the next with extra volume, dimension and superior phenotype. We have several daughters that will calve this spring, and they are standouts.

RED 1/16 SIMANGUS BULLS

LOT 115 L464 - Homo Polled - Red - 1/16 SM 15/16 AR - ASA# 4241899

BORN	B.WT.	205 ADJ.	205 INDEX	A.D.G.	W.D.A.	365 ADJ.	WT. 1-4	SCROTAL
03/12/23	90	821	110	3.62	3.69	1400	1100	34.5

EPD	CE	BW	WW	YW	ADG	MCE	Milk	MWW	STAY	DOC	CW	YG	MB	BF	REA	API	TI
	9.0	2.2	91.1	149.8	0.37	6.3	27.7	73.2	11.7	11.6	44.6	0.05	0.14	0.017	0.42	105.3	81.9
%			10	5	4		25	10			25						45

SIRE: SUTPHIN'S OUT IN FRONT 6699

DAM: TNT G206 - LMG GILLS INDEED 4736 - TNT W156 - BECKTON HUSTLER S426 C2 - TNT T129 - TNT GUNNER N208

Here is a flawless, long bodied, deep sided, darker red 4th generation SimAngus son of our exceptional red angus herd sire, Out In Front. He was the high selling, high gaining and over all high indexing red angus at the Midland bull test and was also one of the most feed efficient, not an easy task. His dam is a broody, long sided, powerful cow with a 109 WW and 106 YW ratio on her first 3 calves, out of Gills Indeed, the female maker, back to an exceptional Hustler daughter. Lots of longevity and performance in this mating.

LOT 116 L494 - Homo Polled - Red - 1/16 SM 29/32 AR 1/32 AN - ASA# 4241926

BORN	B.WT.	205 ADJ.	205 INDEX	A.D.G.	W.D.A.	365 ADJ.	WT. 1-4	SCROTAL
03/12/23	82	804	108	4.12	3.75	1472	1105	37.5

EPD	CE	BW	WW	YW	ADG	MCE	Milk	MWW	STAY	DOC	CW	YG	MB	BF	REA	API	TI
	14.8	-2.2	72.7	109.0	0.23	8.1	34.1	70.4	13.1	11.7	23.1	0.03	0.24	0.02	0.26	118.8	79.1
%	25	15				30	2	15									

SIRE: SUTPHIN'S OUT IN FRONT 6699 **DAM: TNT H143 - SCHULER REBEL 0029X - TNT F154 - LEACHMAN CADILLAC L025A - TNT D124 - RUST RECOIL 46A**

Here is a docile, medium framed, thick, dark red 6th generation SimAngus son of Out In Front, a son that we believe will work on heifers. His sire is a very consistent sire who stamps his calves in his image. His dam is a high performance Rebel daughter with a 112 WW ratio on her first 2 calves, raising our 5th high WW heifer as a 1st calf heifer. Her dam is a broody, ideally made cow with a 107 WW and 105 YW ratio on her calves. She raised our 3rd high WW heifer last year out of Regal.

PUREBRED RED ANGUS BULLS**LOT 117 L658 - Homo Polled - Red - PUREBRED RED ANGUS - ASA# 4242165**

BORN	B.WT.	205 ADJ.	205 INDEX	A.D.G.	W.D.A.	365 ADJ.	WT. 1-4	SCROTAL
03/04/23	70	760	103	3.41	3.32	1305	1015	36

EPD	CE	BW	WW	YW	ADG	MCE	Milk	MWW	STAY	DOC	CW	YG	MB	BF	REA	API	TI
	14.9	-3.9	82.3	134.2	0.32	10.0	26.5	67.6	14.4	16.5	18.2	0.1	0.79	0.049	0.19	160.8	100.5
%	25	5	25	20	20	10	30	25		10			5			15	2

SIRE: BIEBER CL STOCKMARKET E119 **DAM: TNT J116 - WFL MERLIN 018A - TNT G105 - LMG GILLS INDEED 4736 - TNTS Z12 - MUSHRUSH IMPRESSIVE CA U236**

Here is a very attractive, smooth-made bull that should work great on heifers. Both his sire and maternal sire are highly proven heifer bulls with excellent growth and very high maternal traits and very high marbling. His dam is a very docile, broody made, 1st calf heifer. He is a multi-purpose bull, heifer safe with superior growth, docility, marbling and very strong maternal.

LOT 118 L716 - Homo Polled - Red - PUREBRED RED ANGUS - ASA# 4242110

BORN	B.WT.	205 ADJ.	205 INDEX	A.D.G.	W.D.A.	365 ADJ.	WT. 1-4	SCROTAL
03/17/23	88	733	100	3.76	3.48	1335	1020	34

EPD	CE	BW	WW	YW	ADG	MCE	Milk	MWW	STAY	DOC	CW	YG	MB	BF	REA	API	TI
	13.8	-0.5	60.5	106.1	0.28	9.8	23.5	53.6	11.5	16.2	28.4	-0.03	0.33	0.018	0.5	114.5	72.1
%	35	35			40	15				15							

SIRE: SUTPHIN'S OUT IN FRONT 6699 **DAM: TNT G200 - LMG GILLS INDEED 4736 - TNTS Z129 - MESSMER PACKER S008 - NSFM M14 - BUF CRK DYNAMICS 3820**

A thick, deep, dark red, very attractive made bull. He is made in the image of his sire, who was the high selling Red Angus at the 2021 Midland Bull test, where he was also the high gaining and high feed efficient bull. His first daughters will calve this spring and they look like peas in a pod, broody, easy-keeping with extra style and eye-appeal. His dam, G200, is a very easy keeping, ideal uddered cow. She is a daughter of Gills Indeed, whose daughters are exceptional. Her dam is an ET daughter of our great donor M14. We had a full brother to Lot 118 in last years sale going to long time customer Doug Lamont who finishes all of his calves.

LOT 119 L722 - Homo Polled - Red - PUREBRED RED ANGUS - ASA# 4242091

BORN	B.WT.	205 ADJ.	205 INDEX	A.D.G.	W.D.A.	365 ADJ.	WT. 1-4	SCROTAL
03/19/23	86	779	106	3.75	3.57	1379	1040	36

EPD	CE	BW	WW	YW	ADG	MCE	Milk	MWW	STAY	DOC	CW	YG	MB	BF	REA	API	TI
	13.5	0.3	75.3	118.7	0.27	8.7	24.7	62.3	18.3	15.0	19.1	0.06	0.1	0.026	0.15	117.3	73.3
%	40	50	50	45	45	25	45	50	15	20							

SIRE: SUTPHIN'S OUT IN FRONT 6699 **DAM: TNT G131 - LMG GILLS INDEED 4736 - RXX RD022 - HRA CHEROKEE CANYON 261 - HRA 104 - LEACHMAN OUTLAW 1047G**

A moderate framed, thick, very attractive made bull. We are very happy with his sire, Out In Front. His calves are one like the next, phenotype standouts with extra volume and mass. He was a real anomaly, being the most feed efficient and the top gainer at the Midland Bull test. His dam is a broody made daughter of Gills Indeed, a real longevity sire that was very sound at 7 years old when we sold him for a breeding bull, and her dam raised 13 calves for us, with a 362-day calving interval. A pedigree stacked with longevity.

THANK YOU!

We want to thank all of you for your support of TNT Simmentals over the past 38 years, making the TNT Simmental Ranch what it is today. Thank YOU so much for what you have done for us. We never could have done this without the support of our dedicated customers, our family and our friends. We continue to be blessed as we "Carry-On" the TNT "Explosive Difference" with the next generation at our ranch in Lehr. The confidence you have in our program is the greatest compliment we could receive.

Thank you so much for your interest in our cattle. You and your opinion are very important to us, and we like hearing how our cattle work out for you. You are always welcome to come and visit us at the ranch. Thanks again!

Sincerely, **Gabriel & Shanon Erbele & family and Kevin & Lynette Thompson**



TNT SIMMENTAL RANCH

SHANON & GABE ERBELE
6471 51ST AVE SE • LEHR, ND 58460

TNT

39TH ANNUAL "CARRYING ON"
THE EXPLOSIVE DIFFERENCE SALE

Friday, **FEBRUARY 9, 2024**
1 p.m. CST • Erbele Ranch, Lehr, ND



Granddam to Lot 26 and Her Duke Heifer



Full Sister to Dam of Lot 76 and Her Captivate Heifer



Lot 69 and His Dam



Lot 89 and His Dam



S17 Daughter x Craftsman ET



Lot 103 and His Dam

Volume Discounts!

View a video of every bull on our Website, DVAuction or Facebook!